

## Product datasheet for **TA366443**

### PREPL Rabbit Polyclonal Antibody

#### Product data:

Product Type:	Primary Antibodies
Applications:	IHC, WB
Recommended Dilution:	WB: 500-2000 WB positive control: NIH/3T3 cell lysate IHC: 50-200 Positive control: Human colorectal cancer Predicted cell location: Cytoplasm
Reactivity:	Human, Mouse, Rat
Host:	Rabbit
Isotype:	IgG
Clonality:	Polyclonal
Immunogen:	Fusion protein of human PREPL
Formulation:	pH7.4 PBS, 0.05% NaN <sub>3</sub> , 40% Glycerol
Concentration:	lot specific
Purification:	Antigen affinity purification
Conjugation:	Unconjugated
Storage:	Store at -20°C.
Stability:	1 year
Predicted Protein Size:	84 kDa
Gene Name:	prolyl endopeptidase-like
Database Link:	<a href="#">Entrez Gene 9581 Human Q4J6C6</a>

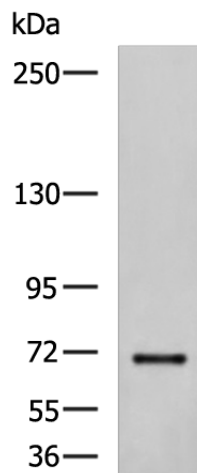
**Background:** The protein encoded by this gene belongs to the prolyl oligopeptidase subfamily of serine peptidases. Mutations in this gene have been associated with hypotonia-cystinuria syndrome, also known as the 2p21 deletion syndrome. Several alternatively spliced transcript variants encoding either the same or different isoforms have been described for this gene.



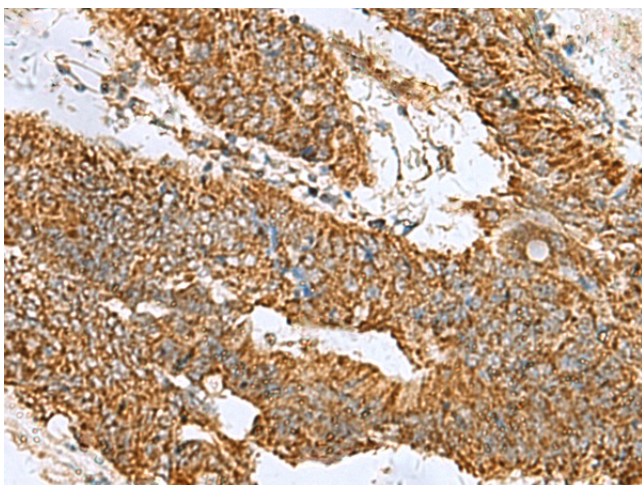
[View online »](#)

**Synonyms:** FLJ16627; KIAA0436; OTTHUMP00000202420; OTTHUMP00000202421;  
OTTHUMP00000202424; OTTHUMP00000202425; OTTHUMP00000202426;  
Prolylendopeptidase-like

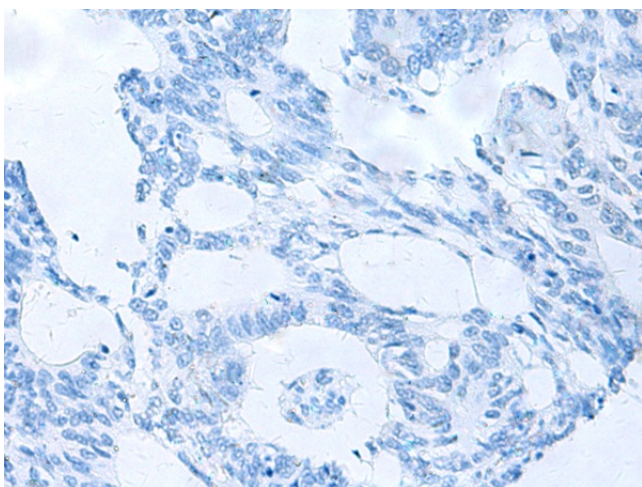
### Product images:



Gel: 6%SDS-PAGE  
Lysate: 40 µg  
Lane: NIH/3T3 cell lysate  
Primary antibody: TA366443 (PREPL Antibody) at dilution 1/850  
Secondary antibody: Goat anti rabbit IgG at 1/5000 dilution  
Exposure time: 1 minute



Immunohistochemistry of paraffin-embedded Human colorectal cancer tissue using TA366443 (PREPL Antibody) at dilution 1/60 (Original magnification: x200)



Immunohistochemistry of paraffin-embedded Human colorectal cancer tissue using TA366443 (PREPL Antibody) at dilution 1/60, treated with fusion protein. (Original magnification: ×200)