

## Product datasheet for **TA366437**

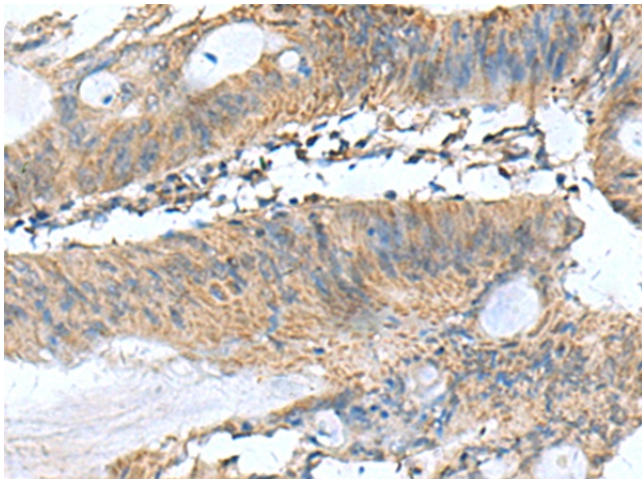
### **PAFAH1B3 Rabbit Polyclonal Antibody**

#### **Product data:**

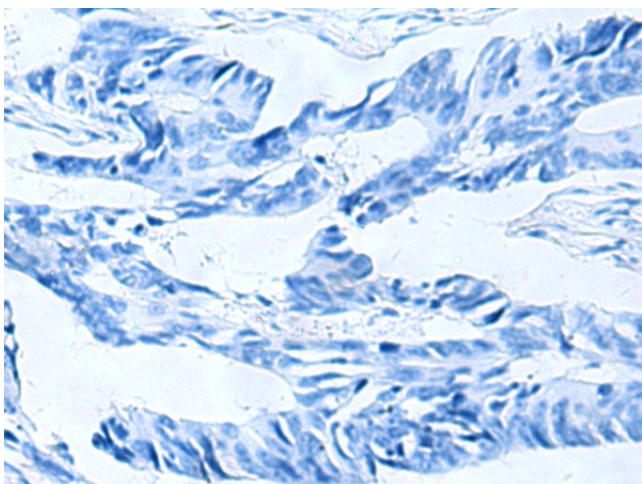
<b>Product Type:</b>	Primary Antibodies
<b>Applications:</b>	IHC
<b>Recommended Dilution:</b>	IHC: 50-200 Positive control: Human colorectal cancer Predicted cell location: Cytoplasm
<b>Reactivity:</b>	Human, Mouse, Rat
<b>Host:</b>	Rabbit
<b>Isotype:</b>	IgG
<b>Clonality:</b>	Polyclonal
<b>Immunogen:</b>	Fusion protein of human PAFAH1B3
<b>Formulation:</b>	pH7.4 PBS, 0.05% NaN <sub>3</sub> , 40% Glycerol
<b>Concentration:</b>	lot specific
<b>Purification:</b>	Antigen affinity purification
<b>Conjugation:</b>	Unconjugated
<b>Storage:</b>	Store at -20°C.
<b>Stability:</b>	1 year
<b>Gene Name:</b>	platelet activating factor acetylhydrolase 1b catalytic subunit 3
<b>Database Link:</b>	<a href="#">Entrez Gene 5050 Human Q15102</a>
<b>Background:</b>	This gene encodes an acetylhydrolase that catalyzes the removal of an acetyl group from the glycerol backbone of platelet-activating factor. The encoded enzyme is a subunit of the platelet-activating factor acetylhydrolase isoform 1B complex, which consists of the catalytic beta and gamma subunits and the regulatory alpha subunit. This complex functions in brain development. A translocation between this gene on chromosome 19 and the CDC-like kinase 2 gene on chromosome 1 has been observed, and was associated with cognitive disability, ataxia, and atrophy of the brain. Alternatively spliced transcript variants have been described.
<b>Synonyms:</b>	FLJ44990; PAFAHG



[View online »](#)

**Product images:**

Immunohistochemistry of paraffin-embedded Human colorectal cancer tissue using TA366437 (PAFAH1B3 Antibody) at dilution 1/60 (Original magnification: x200)



Immunohistochemistry of paraffin-embedded Human colorectal cancer tissue using TA366437 (PAFAH1B3 Antibody) at dilution 1/60, treated with fusion protein. (Original magnification: x200)