

## Product datasheet for **TA366434S**

### ITM2C Rabbit Polyclonal Antibody

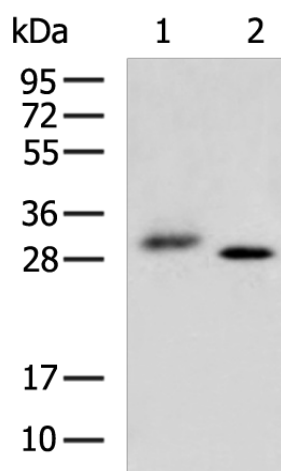
#### Product data:

Product Type:	Primary Antibodies
Applications:	WB
Recommended Dilution:	WB: 500-2000 WB positive control: HepG2 cell, Mouse brain tissue lysates
Reactivity:	Human, Mouse
Host:	Rabbit
Isotype:	IgG
Clonality:	Polyclonal
Immunogen:	Fusion protein of human ITM2C
Formulation:	pH7.4 PBS, 0.05% NaN <sub>3</sub> , 40% Glycerol
Purification:	Antigen affinity purification
Conjugation:	Unconjugated
Storage:	Store at -20°C.
Stability:	1 year
Predicted Protein Size:	30 kDa
Gene Name:	integral membrane protein 2C
Database Link:	<a href="#">Entrez Gene 81618 Human Q9NQX7</a>
Background:	Negative regulator of amyloid-beta peptide production. May inhibit the processing of APP by blocking its access to alpha- and beta-secretase. Binding to the beta-secretase-cleaved APP C-terminal fragment is negligible, suggesting that ITM2C is a poor gamma-secretase cleavage inhibitor. May play a role in TNF-induced cell death and neuronal differentiation.
Synonyms:	BRI3; BRICD2C; E25; E25C; hRPC.1050_D_4; ITM3



[View online »](#)

## Product images:



Gel: 12%SDS-PAGE  
Lysate: 40  $\mu$ g  
Lane 1-2: HepG2 cell  
Mouse brain tissue lysates  
Primary antibody: [TA366434] (ITM2C Antibody)  
at dilution 1/700  
Secondary antibody: Goat anti rabbit IgG at  
1/5000 dilution  
Exposure time: 30 seconds