

Product datasheet for **TA366432**

CCDC134 Rabbit Polyclonal Antibody

Product data:

Product Type:	Primary Antibodies
Applications:	IHC, WB
Recommended Dilution:	WB: 1000-5000 WB positive control: 293T, HepG2 cell, Human fetal liver tissue, Human liver tissue, TM4 cell lysates IHC: 50-200 Positive control: Human tonsil Predicted cell location: Cytoplasm
Reactivity:	Human, Mouse, Rat
Host:	Rabbit
Isotype:	IgG
Clonality:	Polyclonal
Immunogen:	Fusion protein of human CCDC134
Formulation:	pH7.4 PBS, 0.05% NaN ₃ , 40% Glycerol
Concentration:	lot specific
Purification:	Antigen affinity purification
Conjugation:	Unconjugated
Storage:	Store at -20°C.
Stability:	1 year
Predicted Protein Size:	27 kDa
Gene Name:	coiled-coil domain containing 134
Database Link:	Entrez Gene 79879 Human Q9H6E4



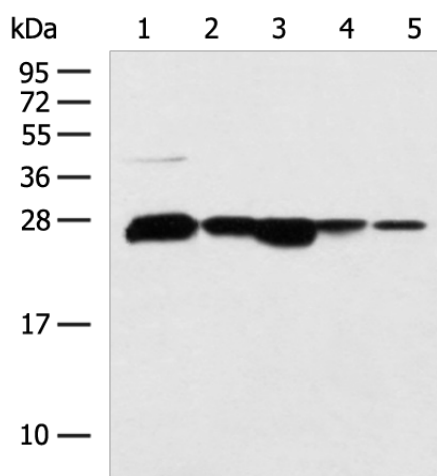
[View online »](#)

Background:

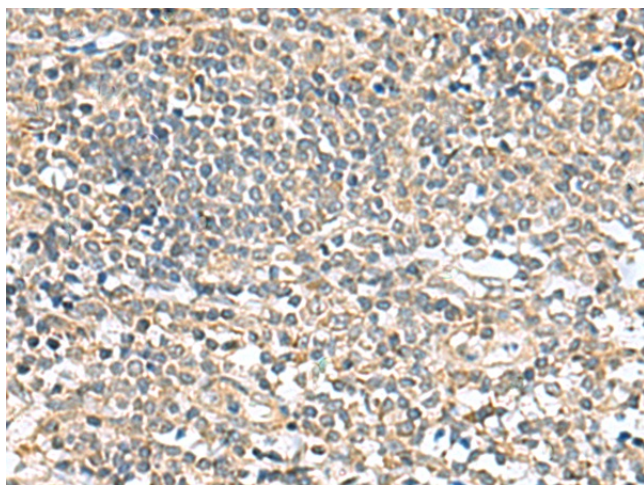
In extracellular secreted form, promotes proliferation and activation of CD8+ T cells, suggesting a cytokine-like function (PubMed:25125657). Enhances cytotoxic anti-tumor activity of CD8+ T cells (PubMed:25125657). May inhibit ERK and JNK signaling activity (PubMed:18087676, PubMed:23070808). May suppress cell migration and invasion activity, via its effects on ERK and JNK signaling (PubMed:23070808). In the nucleus, enhances stability of the PCAF histone acetyltransferase (HAT) complex member TADA2A and thus promotes PCAF-mediated H3K14 and H4K8 HAT activity. May inhibit TADA2A-mediated TP53/p53 'Lys-321' acetylation, leading to reduced TP53 stability and transcriptional activity. May also promote TADA2A-mediated XRCC6 acetylation thus facilitating cell apoptosis in response to DNA damage.

Synonyms:

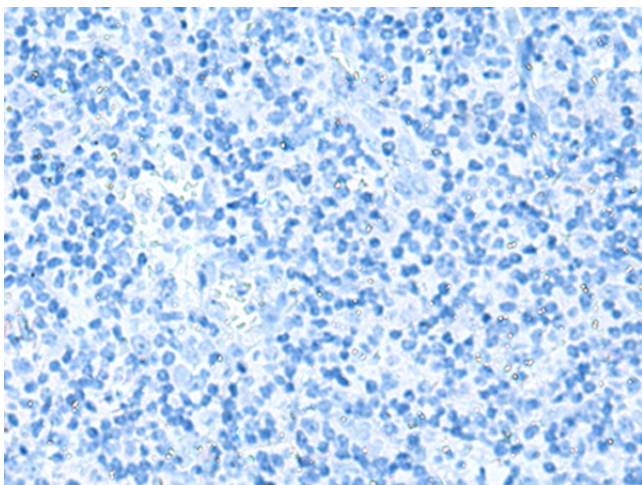
dj821D11.3; FLJ22349; MGC21013

Product images:


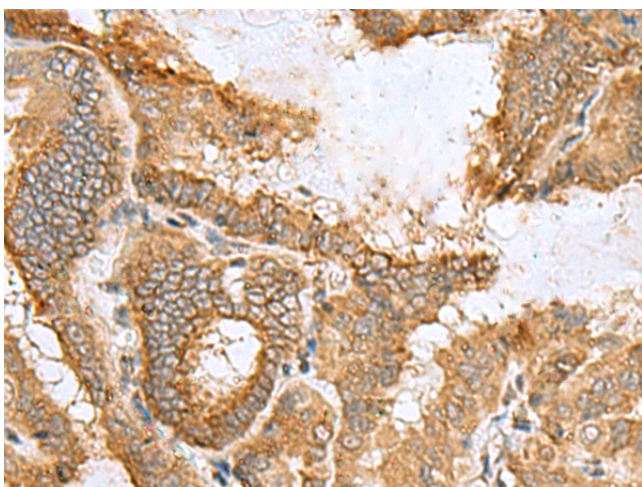
Gel: 12%SDS-PAGE
 Lysate: 40 µg
 Lane 1-5: 293T
 HepG2 cell
 Human fetal liver tissue
 Human liver tissue
 TM4 cell lysates
 Primary antibody: TA366432 (CCDC134 Antibody) at dilution 1/800
 Secondary antibody: Goat anti rabbit IgG at 1/5000 dilution
 Exposure time: 1 minute



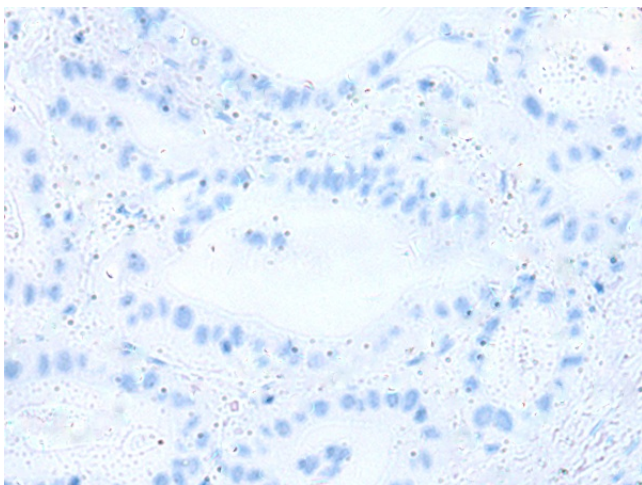
Immunohistochemistry of paraffin-embedded Human tonsil tissue using TA366432 (CCDC134 Antibody) at dilution 1/50 (Original magnification: ×200)



Immunohistochemistry of paraffin-embedded Human tonsil tissue using TA366432 (CCDC134 Antibody) at dilution 1/50, treated with fusion protein. (Original magnification: $\times 200$)



Immunohistochemistry of paraffin-embedded Human thyroid cancer tissue using TA366432 (CCDC134 Antibody) at dilution 1/50 (Original magnification: $\times 200$)



Immunohistochemistry of paraffin-embedded Human thyroid cancer tissue using TA366432 (CCDC134 Antibody) at dilution 1/50, treated with fusion protein. (Original magnification: $\times 200$)