

Product datasheet for **TA366431S**

PGP9.5 (UCHL1) Rabbit Polyclonal Antibody

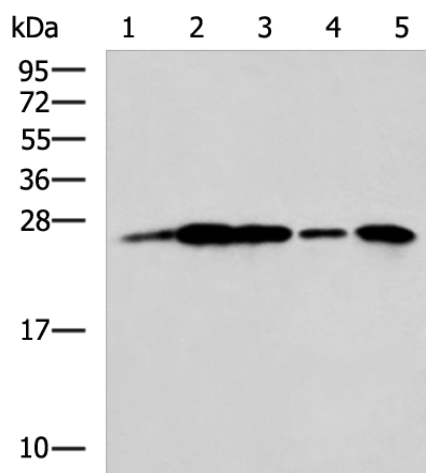
Product data:

Product Type:	Primary Antibodies
Applications:	IHC, WB
Recommended Dilution:	WB: 1000-5000 WB positive control: A549 cell, Rat brain tissue, Mouse brain tissue, A172 cell, Human cerebrum tissue lysates IHC: 50-200 Positive control: Human liver cancer Predicted cell location: Cytoplasm
Reactivity:	Human, Mouse, Rat
Host:	Rabbit
Isotype:	IgG
Clonality:	Polyclonal
Immunogen:	Fusion protein of human UCHL1
Formulation:	pH7.4 PBS, 0.05% NaN ₃ , 40% Glycerol
Purification:	Antigen affinity purification
Conjugation:	Unconjugated
Storage:	Store at -20°C.
Stability:	1 year
Predicted Protein Size:	25 kDa
Gene Name:	ubiquitin C-terminal hydrolase L1
Database Link:	Entrez Gene 7345 Human P09936
Background:	The protein encoded by this gene belongs to the peptidase C12 family. This enzyme is a thiol protease that hydrolyzes a peptide bond at the C-terminal glycine of ubiquitin. This gene is specifically expressed in the neurons and in cells of the diffuse neuroendocrine system. Mutations in this gene may be associated with Parkinson disease.
Synonyms:	PARK5; PGP9.5; PGP95; Uch-L1

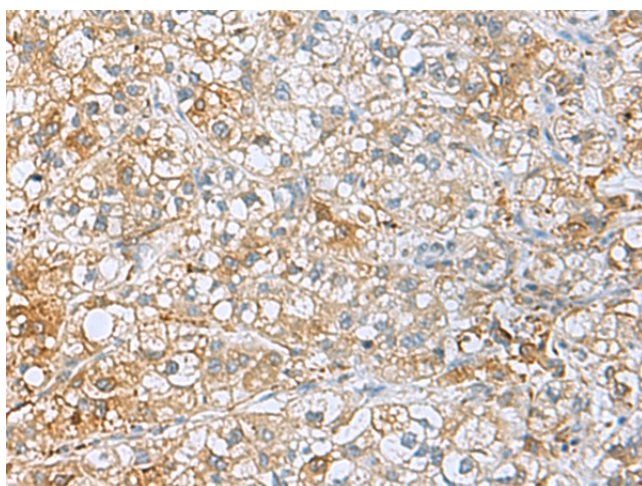


[View online »](#)

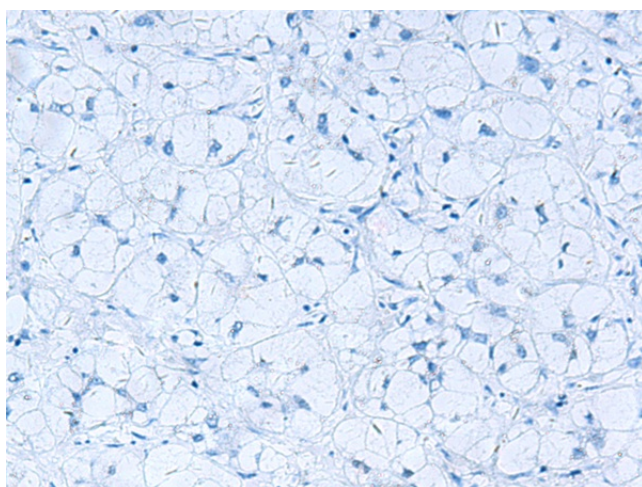
Product images:



Gel: 12%SDS-PAGE
 Lysate: 40 µg
 Lane 1-5: A549 cell
 Rat brain tissue
 Mouse brain tissue
 A172 cell
 Human cerebrum tissue lysates
 Primary antibody: [TA366431] (UCHL1 Antibody)
 at dilution 1/800
 Secondary antibody: Goat anti rabbit IgG at
 1/5000 dilution
 Exposure time: 5 seconds



Immunohistochemistry of paraffin-embedded
 Human liver cancer tissue using [TA366431]
 (UCHL1 Antibody) at dilution 1/50 (Original
 magnification: ×200)



Immunohistochemistry of paraffin-embedded
 Human liver cancer tissue using [TA366431]
 (UCHL1 Antibody) at dilution 1/50, treated with
 fusion protein. (Original magnification: ×200)