

## Product datasheet for **TA366429S**

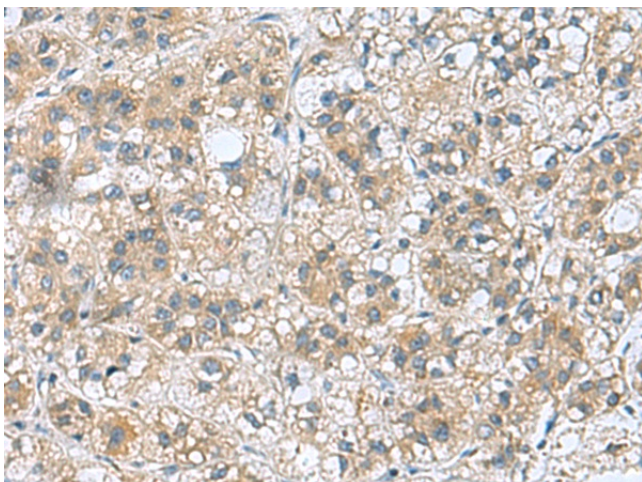
### **RAB39 (RAB39A) Rabbit Polyclonal Antibody**

#### **Product data:**

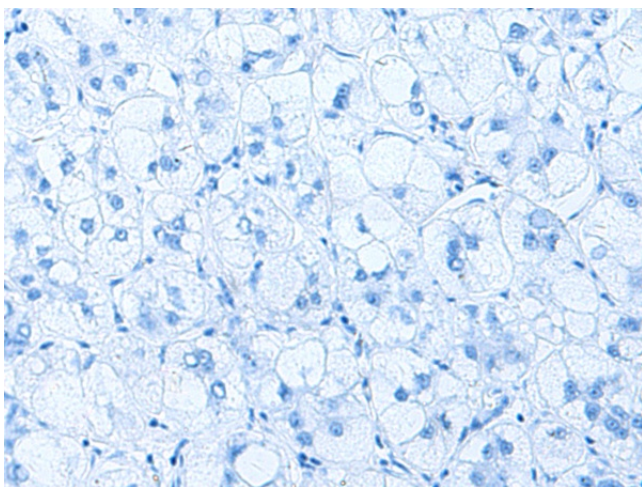
<b>Product Type:</b>	Primary Antibodies
<b>Applications:</b>	IHC
<b>Recommended Dilution:</b>	IHC: 50-200 Positive control: Human liver cancer Predicted cell location: Cytoplasm
<b>Reactivity:</b>	Human, Mouse
<b>Host:</b>	Rabbit
<b>Isotype:</b>	IgG
<b>Clonality:</b>	Polyclonal
<b>Immunogen:</b>	Fusion protein of human RAB39A
<b>Formulation:</b>	pH7.4 PBS, 0.05% NaN <sub>3</sub> , 40% Glycerol
<b>Purification:</b>	Antigen affinity purification
<b>Conjugation:</b>	Unconjugated
<b>Storage:</b>	Store at -20°C.
<b>Stability:</b>	1 year
<b>Gene Name:</b>	RAB39A, member RAS oncogene family
<b>Database Link:</b>	<a href="#">Entrez Gene 54734 Human Q14964</a>
<b>Background:</b>	Plays a role in the maturation and acidification of phagosomes that engulf pathogens, such as <i>S.aureus</i> and <i>M.tuberculosis</i> . Plays a role in vesicular trafficking. Plays a role in the fusion of phagosomes with lysosomes. Negatively regulates LPS-induced autophagosome formation in macrophages possibly by implicating PI3K (PubMed:24349490). May be involved in multiple neurite formation (By similarity).
<b>Synonyms:</b>	RAB39



[View online »](#)

**Product images:**

Immunohistochemistry of paraffin-embedded Human liver cancer tissue using [TA366429] (RAB39A Antibody) at dilution 1/70 (Original magnification:  $\times 200$ )



Immunohistochemistry of paraffin-embedded Human liver cancer tissue using [TA366429] (RAB39A Antibody) at dilution 1/70, treated with fusion protein. (Original magnification:  $\times 200$ )