

## Product datasheet for **TA366429**

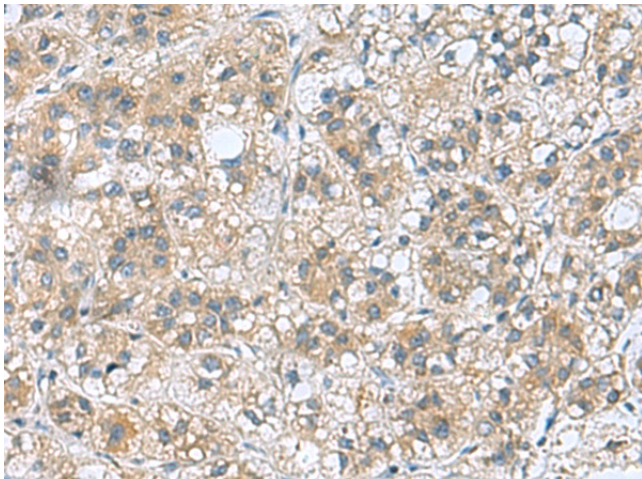
### **RAB39 (RAB39A) Rabbit Polyclonal Antibody**

#### **Product data:**

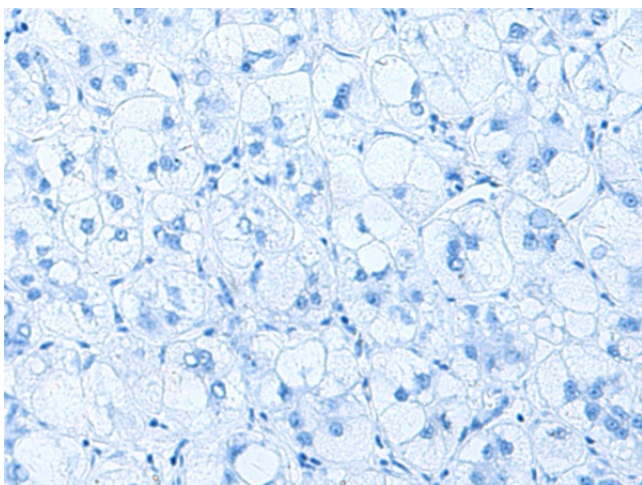
Product Type:	Primary Antibodies
Applications:	IHC
Recommended Dilution:	IHC: 50-200 Positive control: Human liver cancer Predicted cell location: Cytoplasm
Reactivity:	Human, Mouse
Host:	Rabbit
Isotype:	IgG
Clonality:	Polyclonal
Immunogen:	Fusion protein of human RAB39A
Formulation:	pH7.4 PBS, 0.05% NaN <sub>3</sub> , 40% Glycerol
Concentration:	lot specific
Purification:	Antigen affinity purification
Conjugation:	Unconjugated
Storage:	Store at -20°C.
Stability:	1 year
Gene Name:	RAB39A, member RAS oncogene family
Database Link:	<a href="#">Entrez Gene 54734 Human Q14964</a>
Background:	Plays a role in the maturation and acidification of phagosomes that engulf pathogens, such as <i>S.aureus</i> and <i>M.tuberculosis</i> . Plays a role in vesicular trafficking. Plays a role in the fusion of phagosomes with lysosomes. Negatively regulates LPS-induced autophagosome formation in macrophages possibly by implicating PI3K (PubMed:24349490). May be involved in multiple neurite formation (By similarity).
Synonyms:	RAB39



[View online »](#)

**Product images:**

Immunohistochemistry of paraffin-embedded Human liver cancer tissue using TA366429 (RAB39A Antibody) at dilution 1/70 (Original magnification: ×200)



Immunohistochemistry of paraffin-embedded Human liver cancer tissue using TA366429 (RAB39A Antibody) at dilution 1/70, treated with fusion protein. (Original magnification: ×200)