

## Product datasheet for **TA366426**

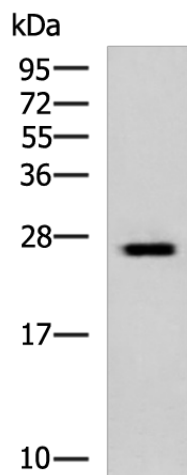
### PSF3 (GINS3) Rabbit Polyclonal Antibody

#### Product data:

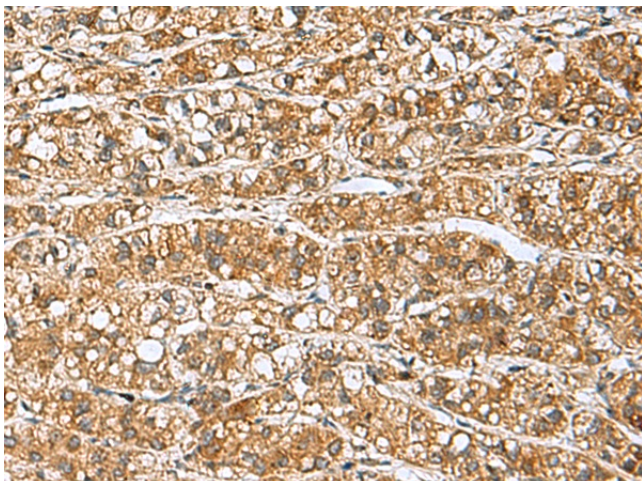
Product Type:	Primary Antibodies
Applications:	IHC, WB
Recommended Dilution:	WB: 500-2000 WB positive control: Hela cell lysate IHC: 50-200 Positive control: Human liver cancer Predicted cell location: Cytoplasm
Reactivity:	Human, Mouse
Host:	Rabbit
Isotype:	IgG
Clonality:	Polyclonal
Immunogen:	Fusion protein of human GINS3
Formulation:	pH7.4 PBS, 0.05% NaN <sub>3</sub> , 40% Glycerol
Concentration:	lot specific
Purification:	Antigen affinity purification
Conjugation:	Unconjugated
Storage:	Store at -20°C.
Stability:	1 year
Predicted Protein Size:	25 kDa
Gene Name:	GINS complex subunit 3
Database Link:	<a href="#">Entrez Gene 64785 Human Q9BRX5</a>
Background:	This gene encodes a protein subunit of the GINS heterotetrameric complex, which is essential for the initiation of DNA replication and replisome progression in eukaryotes. Alternatively spliced transcript variants encoding distinct isoforms have been described.
Synonyms:	FLJ13912; PSF3



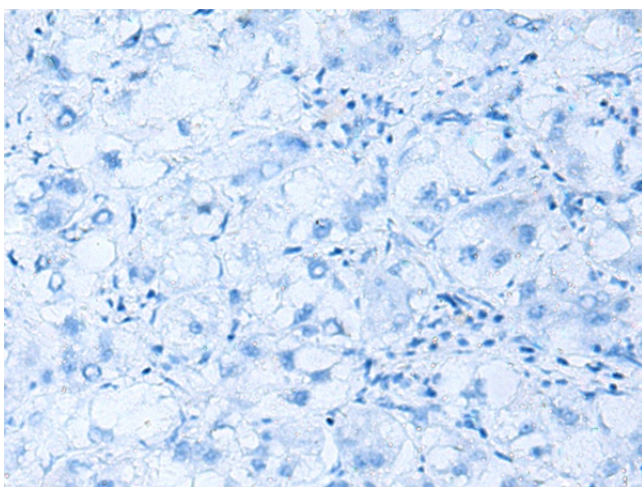
[View online »](#)

**Product images:**

Gel: 12%SDS-PAGE  
Lysate: 40  $\mu$ g  
Lane: HeLa cell lysate  
Primary antibody: TA366426 (GINS3 Antibody) at dilution 1/800  
Secondary antibody: Goat anti rabbit IgG at 1/5000 dilution  
Exposure time: 30 seconds



Immunohistochemistry of paraffin-embedded Human liver cancer tissue using TA366426 (GINS3 Antibody) at dilution 1/60 (Original magnification:  $\times$ 200)



Immunohistochemistry of paraffin-embedded Human liver cancer tissue using TA366426 (GINS3 Antibody) at dilution 1/60, treated with fusion protein. (Original magnification:  $\times 200$ )