

Product datasheet for **TA366425**

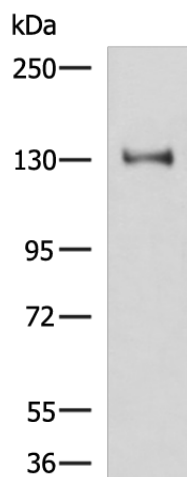
FNBP3 (PRPF40A) Rabbit Polyclonal Antibody

Product data:

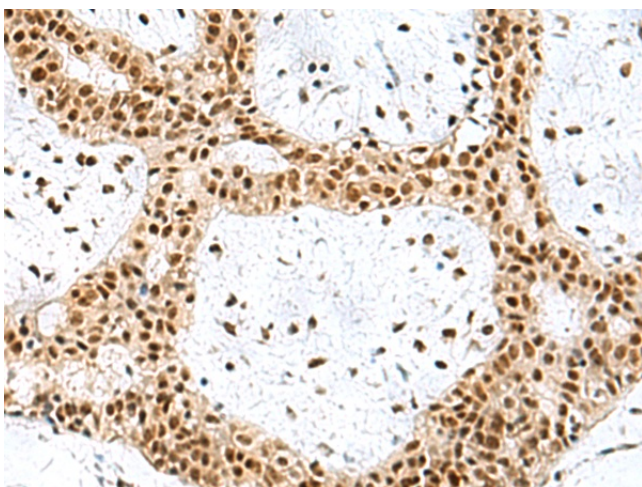
Product Type:	Primary Antibodies
Applications:	IHC, WB
Recommended Dilution:	WB: 500-2000 WB positive control: Hela cell lysate IHC: 50-200 Positive control: Human breast cancer Predicted cell location: Nucleus
Reactivity:	Human, Mouse
Host:	Rabbit
Isotype:	IgG
Clonality:	Polyclonal
Immunogen:	Fusion protein of human PRPF40A
Formulation:	pH7.4 PBS, 0.05% NaN ₃ , 40% Glycerol
Concentration:	lot specific
Purification:	Antigen affinity purification
Conjugation:	Unconjugated
Storage:	Store at -20°C.
Stability:	1 year
Predicted Protein Size:	109 kDa
Gene Name:	pre-mRNA processing factor 40 homolog A
Database Link:	Entrez Gene 55660 Human O75400
Background:	Binds to WASL/N-WASP and suppresses its translocation from the nucleus to the cytoplasm, thereby inhibiting its cytoplasmic function (By similarity). Plays a role in the regulation of cell morphology and cytoskeletal organization. Required in the control of cell shape and migration. May play a role in cytokinesis. May be involved in pre-mRNA splicing.
Synonyms:	FBP-11; FBP11; FLAF1; FLJ20585; FNBP3; HIP10; HYP A; NY-REN-6



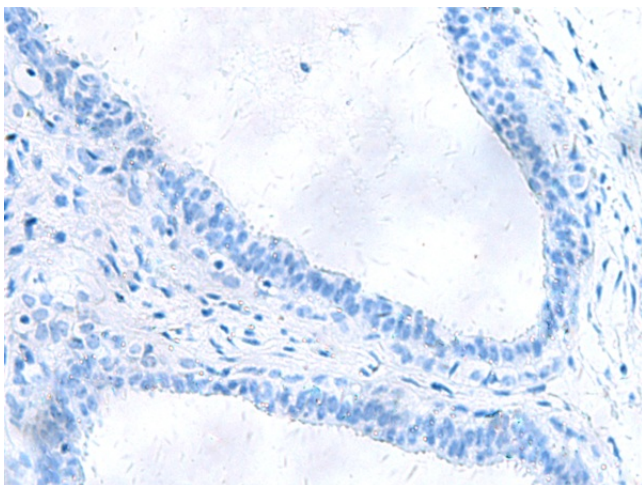
[View online »](#)

Product images:

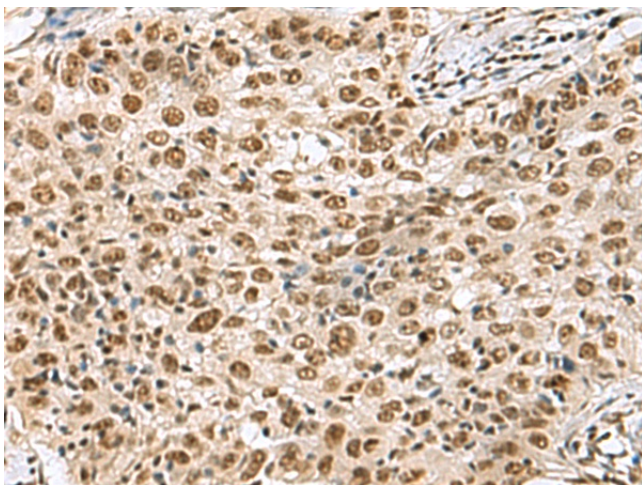
Gel: 6%SDS-PAGE
Lysate: 40 μ g
Lane: HeLa cell lysate
Primary antibody: TA366425 (PRPF40A Antibody) at dilution 1/800
Secondary antibody: Goat anti rabbit IgG at 1/5000 dilution
Exposure time: 5 minutes



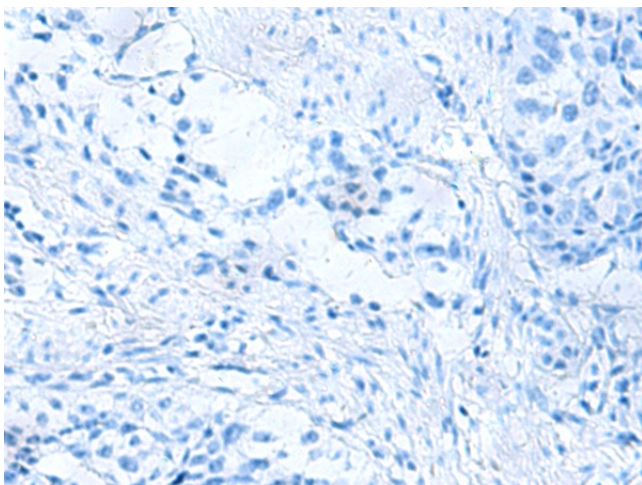
Immunohistochemistry of paraffin-embedded Human breast cancer tissue using TA366425 (PRPF40A Antibody) at dilution 1/60 (Original magnification: \times 200)



Immunohistochemistry of paraffin-embedded Human breast cancer tissue using TA366425 (PRPF40A Antibody) at dilution 1/60, treated with fusion protein. (Original magnification: $\times 200$)



Immunohistochemistry of paraffin-embedded Human esophagus cancer tissue using TA366425 (PRPF40A Antibody) at dilution 1/60 (Original magnification: $\times 200$)



Immunohistochemistry of paraffin-embedded Human esophagus cancer tissue using TA366425 (PRPF40A Antibody) at dilution 1/60, treated with fusion protein. (Original magnification: $\times 200$)