

Product datasheet for **TA366420S**

Myelin expression factor 2 (MYEF2) Rabbit Polyclonal Antibody

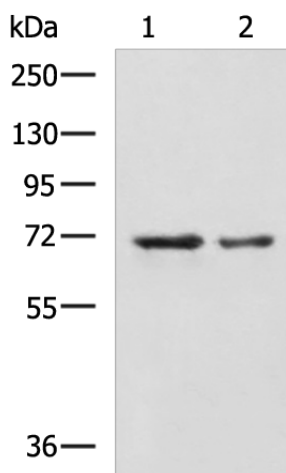
Product data:

| | |
|-------------------------|--|
| Product Type: | Primary Antibodies |
| Applications: | IHC, WB |
| Recommended Dilution: | WB: 500-2000 WB positive control: A172 and TM4 cell lysates IHC: 50-200 Positive control: Human esophagus cancer Predicted cell location: Nucleus |
| Reactivity: | Human, Mouse |
| Host: | Rabbit |
| Isotype: | IgG |
| Clonality: | Polyclonal |
| Immunogen: | Fusion protein of human MYEF2 |
| Formulation: | pH7.4 PBS, 0.05% NaN ₃ , 40% Glycerol |
| Purification: | Antigen affinity purification |
| Conjugation: | Unconjugated |
| Storage: | Store at -20°C. |
| Stability: | 1 year |
| Predicted Protein Size: | 64 kDa |
| Gene Name: | myelin expression factor 2 |
| Database Link: | Entrez Gene 50804 Human Q9P2K5 |
| Background: | Transcriptional repressor of the myelin basic protein gene (MBP). Binds to the proximal MB1 element 5'-TTGTCC-3' of the MBP promoter. Its binding to MB1 and function are inhibited by PURA (By similarity). |
| Synonyms: | FLJ11213; HsT18564; KIAA1341; MEF-2; MGC87325; MST156; MSTP156; MyEF-2 |

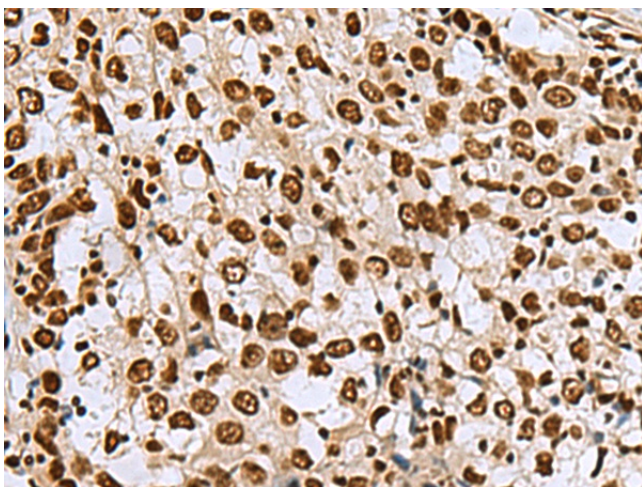


[View online »](#)

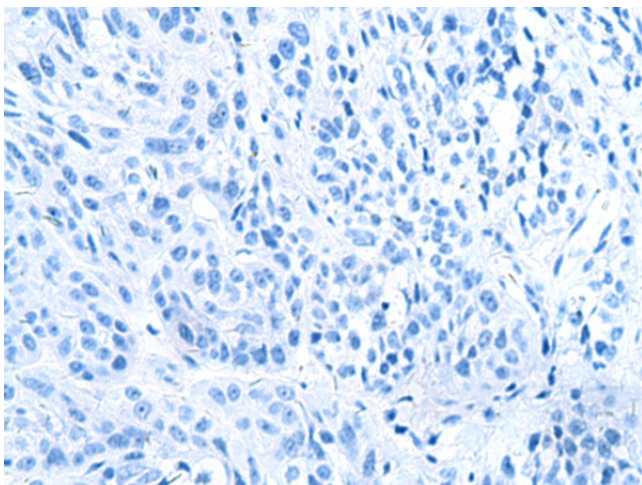
Product images:



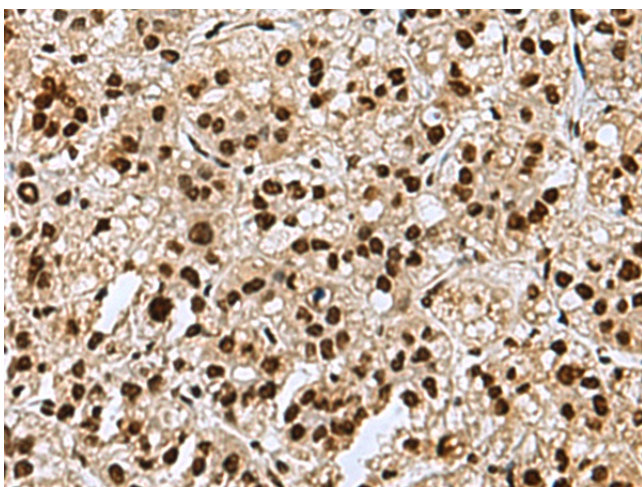
Gel: 8%SDS-PAGE
Lysate: 40 µg
Lane 1-2: A172 and TM4 cell lysates
Primary antibody: [TA366420] (MYEF2 Antibody)
at dilution 1/800
Secondary antibody: Goat anti rabbit IgG at
1/5000 dilution
Exposure time: 4 minutes



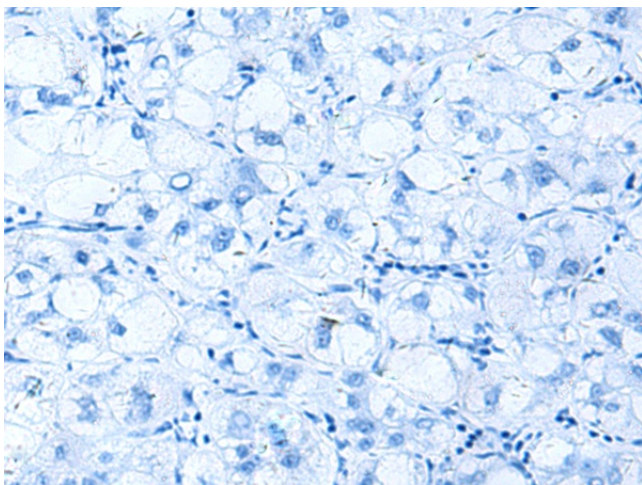
Immunohistochemistry of paraffin-embedded
Human esophagus cancer tissue using
[TA366420] (MYEF2 Antibody) at dilution 1/70
(Original magnification: ×200)



Immunohistochemistry of paraffin-embedded Human esophagus cancer tissue using [TA366420] (MYEF2 Antibody) at dilution 1/70, treated with fusion protein. (Original magnification: $\times 200$)



Immunohistochemistry of paraffin-embedded Human liver cancer tissue using [TA366420] (MYEF2 Antibody) at dilution 1/70 (Original magnification: $\times 200$)



Immunohistochemistry of paraffin-embedded Human liver cancer tissue using [TA366420] (MYEF2 Antibody) at dilution 1/70, treated with fusion protein. (Original magnification: $\times 200$)