

## Product datasheet for **TA366419**

### Clathrin light chain (CLTB) Rabbit Polyclonal Antibody

#### Product data:

Product Type:	Primary Antibodies
Applications:	IHC, WB
Recommended Dilution:	WB: 500-2000 WB positive control: NIH/3T3, LO2 and Jurkat cell lysates IHC: 50-200 Positive control: Human colorectal cancer Predicted cell location: Cytoplasm
Reactivity:	Human, Mouse
Host:	Rabbit
Isotype:	IgG
Clonality:	Polyclonal
Immunogen:	Fusion protein of human CLTB
Formulation:	pH7.4 PBS, 0.05% NaN <sub>3</sub> , 40% Glycerol
Concentration:	lot specific
Purification:	Antigen affinity purification
Conjugation:	Unconjugated
Storage:	Store at -20°C.
Stability:	1 year
Predicted Protein Size:	25 kDa
Gene Name:	clathrin light chain B
Database Link:	<a href="#">Entrez Gene 1212 Human P09497</a>

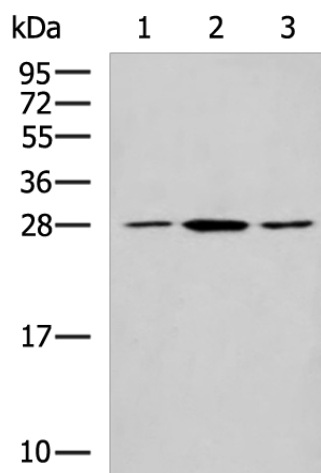
**Background:** Clathrin is a large, soluble protein composed of heavy and light chains. It functions as the main structural component of the lattice-type cytoplasmic face of coated pits and vesicles which entrap specific macromolecules during receptor-mediated endocytosis. This gene encodes one of two clathrin light chain proteins which are believed to function as regulatory elements. Alternative splicing results in multiple transcript variants.

**Synonyms:** Lcb

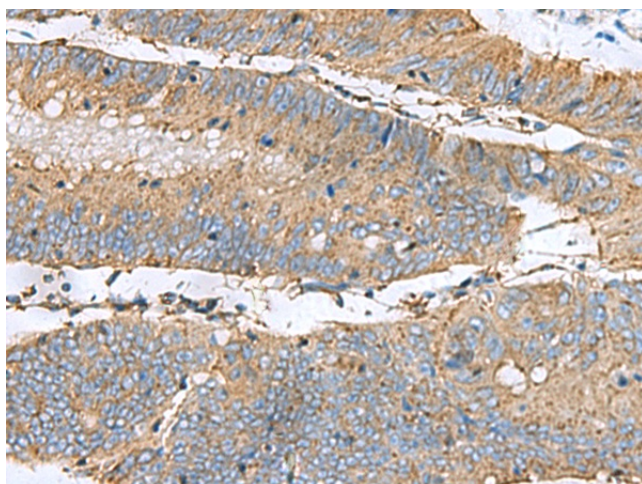


[View online »](#)

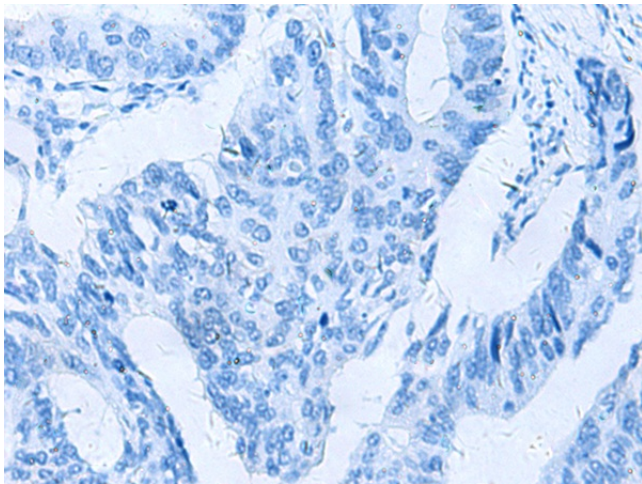
Product images:



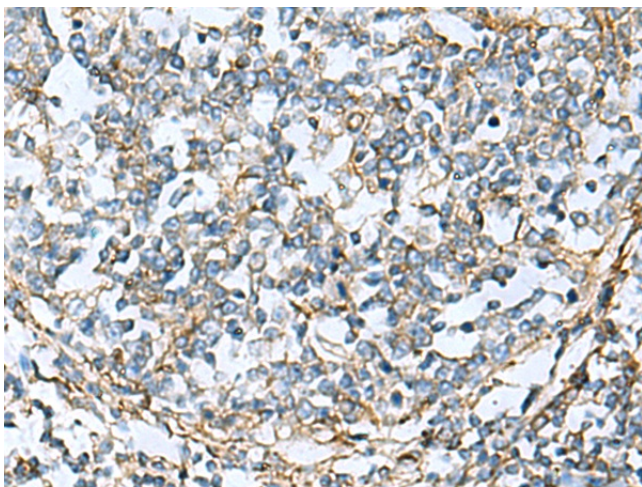
Gel: 12%SDS-PAGE  
 Lysate: 40 µg  
 Lane 1-3: NIH/3T3  
 LO2 and Jurkat cell lysates  
 Primary antibody: TA366419 (CLTB Antibody) at dilution 1/800  
 Secondary antibody: Goat anti rabbit IgG at 1/5000 dilution  
 Exposure time: 25 seconds



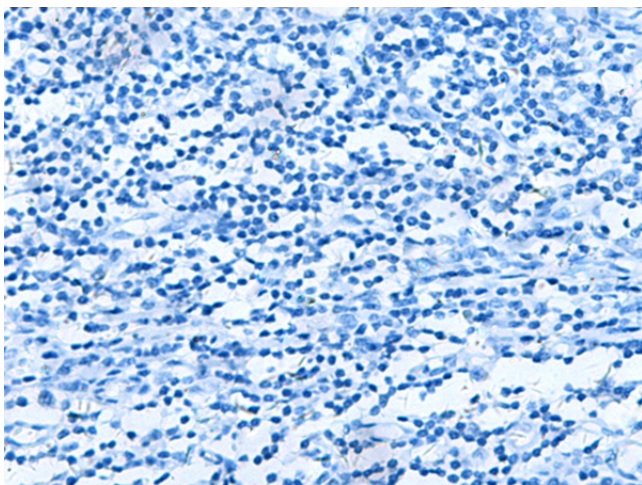
Immunohistochemistry of paraffin-embedded Human colorectal cancer tissue using TA366419 (CLTB Antibody) at dilution 1/60 (Original magnification: ×200)



Immunohistochemistry of paraffin-embedded Human colorectal cancer tissue using TA366419 (CLTB Antibody) at dilution 1/60, treated with fusion protein. (Original magnification: ×200)



Immunohistochemistry of paraffin-embedded Human tonsil tissue using TA366419 (CLTB Antibody) at dilution 1/60 (Original magnification: ×200)



Immunohistochemistry of paraffin-embedded Human tonsil tissue using TA366419 (CLTB Antibody) at dilution 1/60, treated with fusion protein. (Original magnification: ×200)