

## Product datasheet for **TA366415S**

### MRPL22 Rabbit Polyclonal Antibody

#### Product data:

Product Type:	Primary Antibodies
Applications:	IHC, WB
Recommended Dilution:	WB: 500-2000 WB positive control: Jurkat cell, Mouse kidney tissue, HepG2 cell lysates IHC: 50-200 Positive control: Human liver cancer Predicted cell location: Cytoplasm
Reactivity:	Human, Mouse, Rat
Host:	Rabbit
Isotype:	IgG
Clonality:	Polyclonal
Immunogen:	Fusion protein of human MRPL22
Formulation:	pH7.4 PBS, 0.05% NaN <sub>3</sub> , 40% Glycerol
Purification:	Antigen affinity purification
Conjugation:	Unconjugated
Storage:	Store at -20°C.
Stability:	1 year
Predicted Protein Size:	24 kDa
Gene Name:	mitochondrial ribosomal protein L22
Database Link:	<a href="#">Entrez Gene 29093 Human Q9NWU5</a>



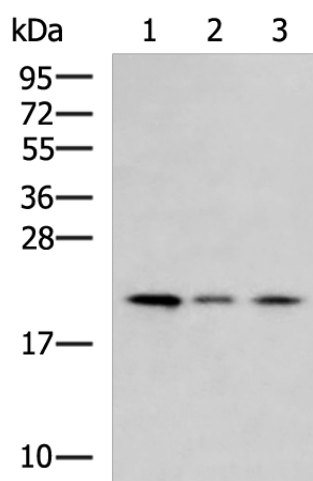
[View online »](#)

**Background:**

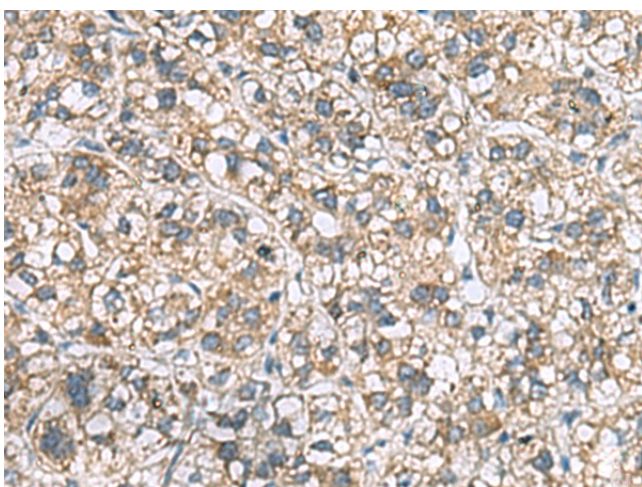
Mammalian mitochondrial ribosomal proteins are encoded by nuclear genes and help in protein synthesis within the mitochondrion. Mitochondrial ribosomes (mitoribosomes) consist of a small 28S subunit and a large 39S subunit. They have an estimated 75% protein to rRNA composition compared to prokaryotic ribosomes, where this ratio is reversed. Another difference between mammalian mitoribosomes and prokaryotic ribosomes is that the latter contain a 5S rRNA. Among different species, the proteins comprising the mitoribosome differ greatly in sequence, and sometimes in biochemical properties, which prevents easy recognition by sequence homology. This gene encodes a 39S subunit protein that belongs to the L22 ribosomal protein family. A pseudogene corresponding to this gene is found on chromosome 4q. Two transcript variants encoding different isoforms have been found for this gene.

**Synonyms:**

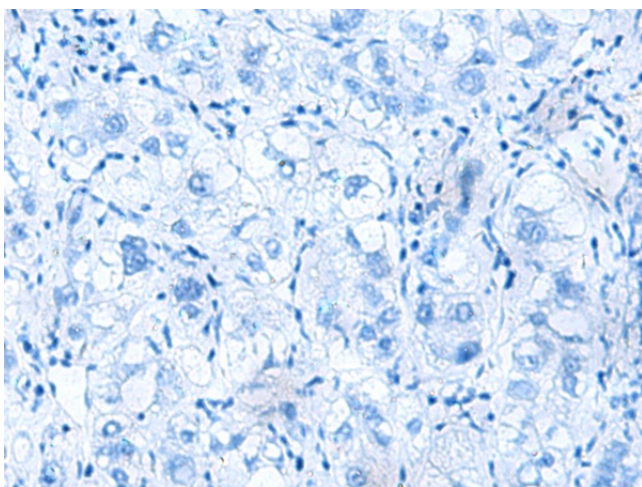
DKFZp781F1071; HSPC158; L22mt; MRP-L22; MRP-L25; MRPL25; RPML25

**Product images:**

Gel: 12%SDS-PAGE  
Lysate: 40 µg  
Lane 1-3: Jurkat cell  
Mouse kidney tissue  
HepG2 cell lysates  
Primary antibody: [TA366415] (MRPL22 Antibody)  
at dilution 1/800  
Secondary antibody: Goat anti rabbit IgG at  
1/5000 dilution  
Exposure time: 1 minute



Immunohistochemistry of paraffin-embedded  
Human liver cancer tissue using [TA366415]  
(MRPL22 Antibody) at dilution 1/60 (Original  
magnification: ×200)



Immunohistochemistry of paraffin-embedded Human liver cancer tissue using [TA366415] (MRPL22 Antibody) at dilution 1/60, treated with fusion protein. (Original magnification: ×200)