

Product datasheet for **TA366415**

MRPL22 Rabbit Polyclonal Antibody

Product data:

Product Type:	Primary Antibodies
Applications:	IHC, WB
Recommended Dilution:	WB: 500-2000 WB positive control: Jurkat cell, Mouse kidney tissue, HepG2 cell lysates IHC: 50-200 Positive control: Human liver cancer Predicted cell location: Cytoplasm
Reactivity:	Human, Mouse, Rat
Host:	Rabbit
Isotype:	IgG
Clonality:	Polyclonal
Immunogen:	Fusion protein of human MRPL22
Formulation:	pH7.4 PBS, 0.05% NaN ₃ , 40% Glycerol
Concentration:	lot specific
Purification:	Antigen affinity purification
Conjugation:	Unconjugated
Storage:	Store at -20°C.
Stability:	1 year
Predicted Protein Size:	24 kDa
Gene Name:	mitochondrial ribosomal protein L22
Database Link:	Entrez Gene 29093 Human Q9NWU5



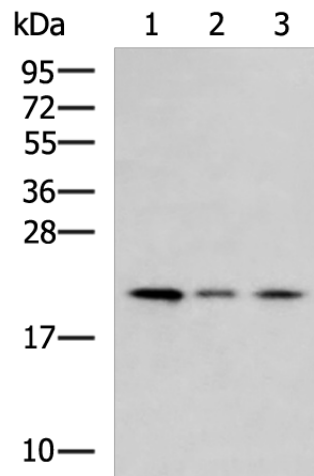
[View online »](#)

Background:

Mammalian mitochondrial ribosomal proteins are encoded by nuclear genes and help in protein synthesis within the mitochondrion. Mitochondrial ribosomes (mitoribosomes) consist of a small 28S subunit and a large 39S subunit. They have an estimated 75% protein to rRNA composition compared to prokaryotic ribosomes, where this ratio is reversed. Another difference between mammalian mitoribosomes and prokaryotic ribosomes is that the latter contain a 5S rRNA. Among different species, the proteins comprising the mitoribosome differ greatly in sequence, and sometimes in biochemical properties, which prevents easy recognition by sequence homology. This gene encodes a 39S subunit protein that belongs to the L22 ribosomal protein family. A pseudogene corresponding to this gene is found on chromosome 4q. Two transcript variants encoding different isoforms have been found for this gene.

Synonyms:

DKFZp781F1071; HSPC158; L22mt; MRP-L22; MRP-L25; MRPL25; RPML25

Product images:

Gel: 12%SDS-PAGE

Lysate: 40 µg

Lane 1-3: Jurkat cell

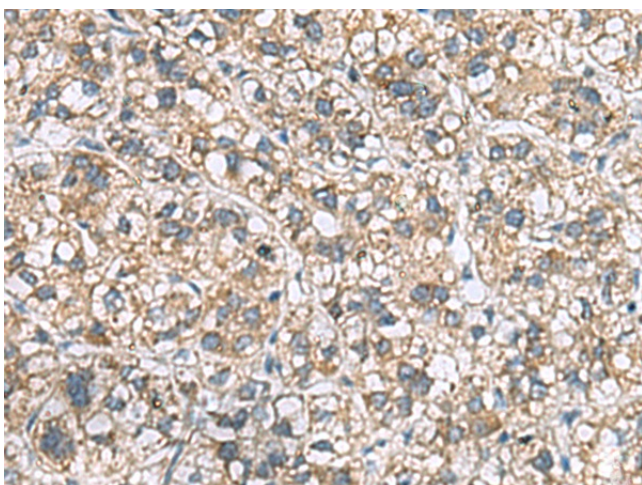
Mouse kidney tissue

HepG2 cell lysates

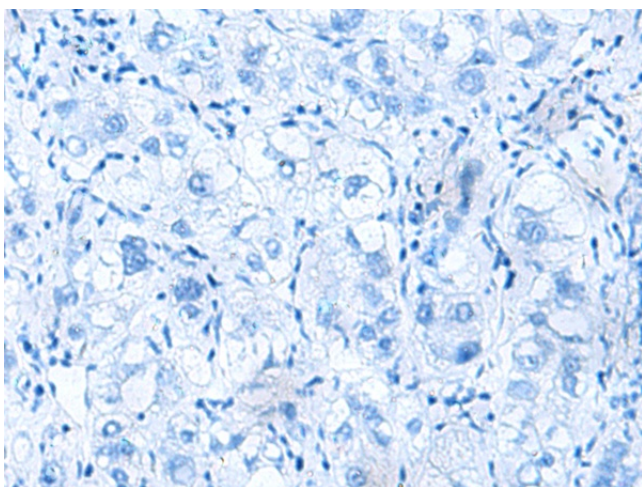
Primary antibody: TA366415 (MRPL22 Antibody)
at dilution 1/800

Secondary antibody: Goat anti rabbit IgG at
1/5000 dilution

Exposure time: 1 minute



Immunohistochemistry of paraffin-embedded Human liver cancer tissue using TA366415 (MRPL22 Antibody) at dilution 1/60 (Original magnification: $\times 200$)



Immunohistochemistry of paraffin-embedded Human liver cancer tissue using TA366415 (MRPL22 Antibody) at dilution 1/60, treated with fusion protein. (Original magnification: $\times 200$)