

Product datasheet for **TA366402**

VILIP3 (HPCAL1) Rabbit Polyclonal Antibody

Product data:

Product Type:	Primary Antibodies
Applications:	IHC, WB
Recommended Dilution:	WB: 1000-5000 WB positive control: A172, HepG2, Hela cell, Rat brain tissue and Mouse brain tissue lysates IHC: 50-200 Positive control: Human tonsil Predicted cell location: Cytoplasm
Reactivity:	Human, Mouse, Rat
Host:	Rabbit
Isotype:	IgG
Clonality:	Polyclonal
Immunogen:	Fusion protein of human HPCAL1
Formulation:	pH7.4 PBS, 0.05% NaN ₃ , 40% Glycerol
Concentration:	lot specific
Purification:	Antigen affinity purification
Conjugation:	Unconjugated
Storage:	Store at -20°C.
Stability:	1 year
Predicted Protein Size:	22 kDa
Gene Name:	hippocalcin like 1
Database Link:	Entrez Gene 3241 Human P37235

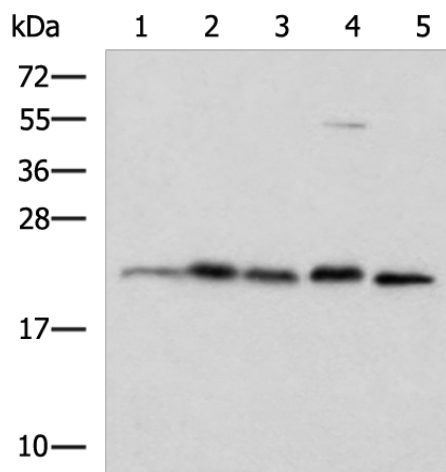
Background: The protein encoded by this gene is a member of neuron-specific calcium-binding proteins family found in the retina and brain. It is highly similar to human hippocalcin protein and nearly identical to the rat and mouse hippocalcin like-1 proteins. It may be involved in the calcium-dependent regulation of rhodopsin phosphorylation and may be of relevance for neuronal signalling in the central nervous system. Several alternatively spliced transcript variants encoding the same protein have been found for this gene.



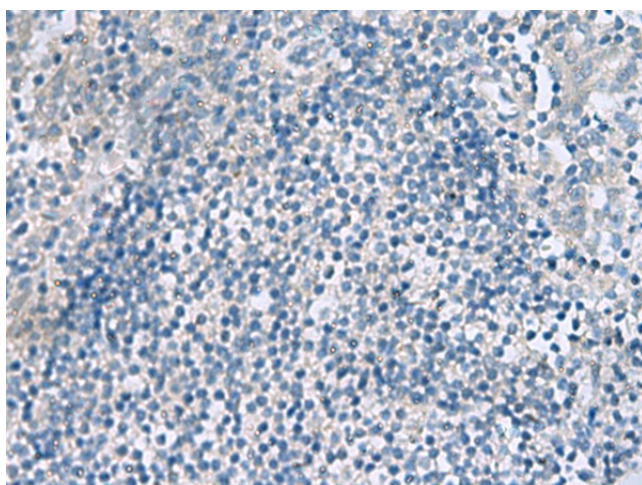
[View online »](#)

Synonyms: BDR1; HLP2; VILIP-3

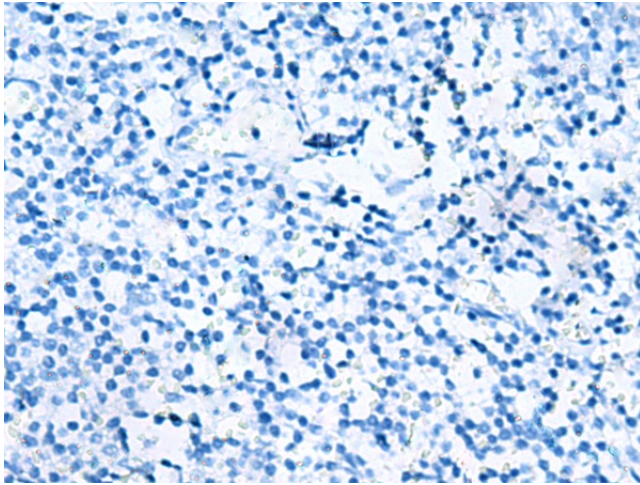
Product images:



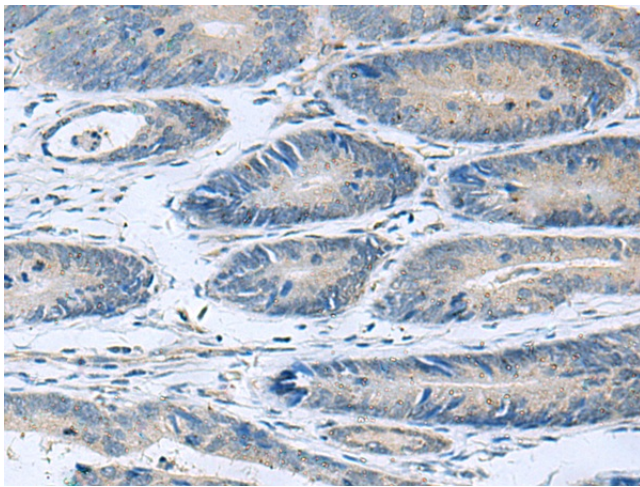
Gel: 12%SDS-PAGE
 Lysate: 40 µg
 Lane 1-5: A172
 HepG2
 Hela cell
 Rat brain tissue and Mouse brain tissue lysates
 Primary antibody: TA366402 (HPCAL1 Antibody)
 at dilution 1/1250
 Secondary antibody: Goat anti rabbit IgG at
 1/5000 dilution
 Exposure time: 5 seconds



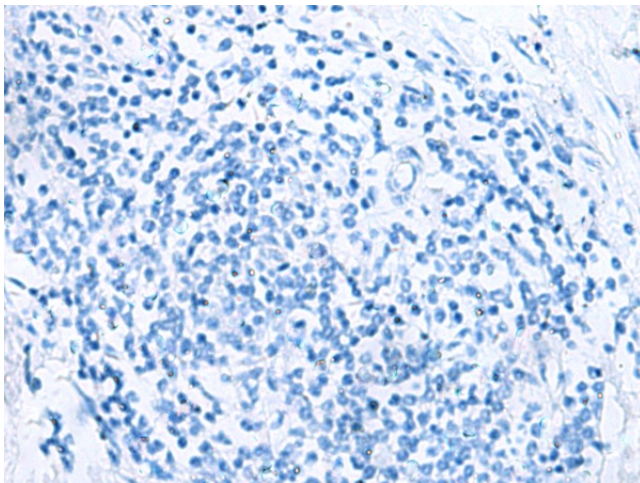
Immunohistochemistry of paraffin-embedded
 Human tonsil tissue using TA366402 (HPCAL1
 Antibody) at dilution 1/90 (Original magnification:
 ×200)



Immunohistochemistry of paraffin-embedded Human tonsil tissue using TA366402 (HPCAL1 Antibody) at dilution 1/90, treated with fusion protein. (Original magnification: $\times 200$)



Immunohistochemistry of paraffin-embedded Human colorectal cancer tissue using TA366402 (HPCAL1 Antibody) at dilution 1/90 (Original magnification: $\times 200$)



Immunohistochemistry of paraffin-embedded Human colorectal cancer tissue using TA366402 (HPCAL1 Antibody) at dilution 1/90, treated with fusion protein. (Original magnification: $\times 200$)