

Product datasheet for **TA366399**

MRPS28 Rabbit Polyclonal Antibody

Product data:

Product Type:	Primary Antibodies
Applications:	IHC, WB
Recommended Dilution:	WB: 500-2000 WB positive control: HL-60, Jurkat and A549 cell lysates IHC: 100-300 Positive control: Human colorectal cancer Predicted cell location: Cytoplasm
Reactivity:	Human
Host:	Rabbit
Isotype:	IgG
Clonality:	Polyclonal
Immunogen:	Fusion protein of human MRPS28
Formulation:	pH7.4 PBS, 0.05% NaN ₃ , 40% Glycerol
Concentration:	lot specific
Purification:	Antigen affinity purification
Conjugation:	Unconjugated
Storage:	Store at -20°C.
Stability:	1 year
Predicted Protein Size:	21 kDa
Gene Name:	mitochondrial ribosomal protein S28
Database Link:	Entrez Gene 28957 Human Q9Y2Q9



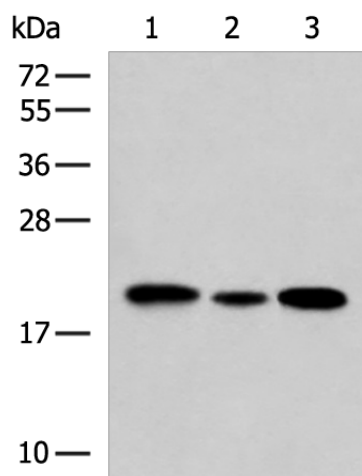
[View online »](#)

Background:

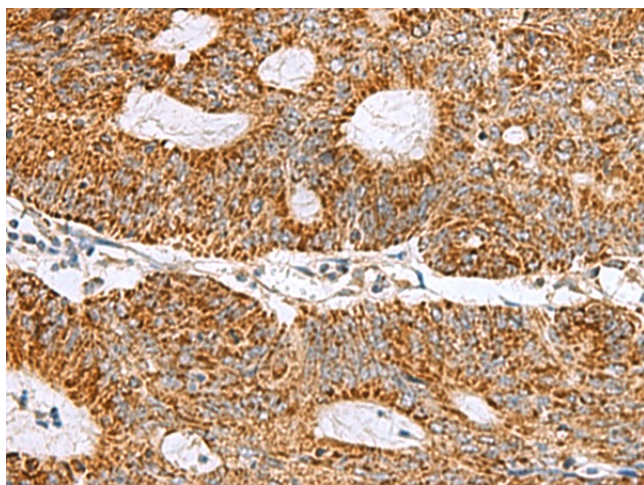
Mammalian mitochondrial ribosomal proteins are encoded by nuclear genes and help in protein synthesis within the mitochondrion. Mitochondrial ribosomes (mitoribosomes) consist of a small 28S subunit and a large 39S subunit. They have an estimated 75% protein to rRNA composition compared to prokaryotic ribosomes, where this ratio is reversed. Another difference between mammalian mitoribosomes and prokaryotic ribosomes is that the latter contain a 5S rRNA. Among different species, the proteins comprising the mitoribosome differ greatly in sequence, and sometimes in biochemical properties, which prevents easy recognition by sequence homology. This gene encodes a 28S subunit protein that has been called mitochondrial ribosomal protein S35 in the literature.

Synonyms:

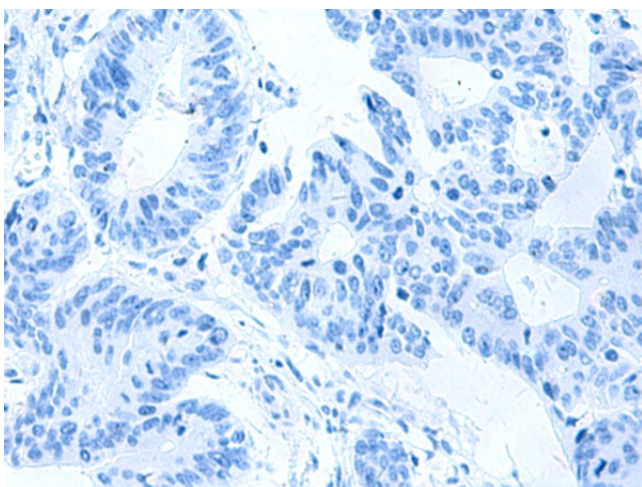
FLJ22853; HSPC007; MRP-S28; MRP-S35; MRPS35; S28mt; S35mt

Product images:

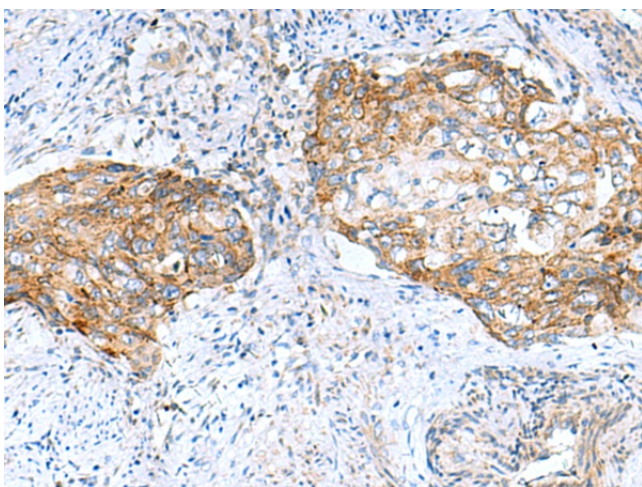
Gel: 12%SDS-PAGE
Lysate: 40 μ g
Lane 1-3: HL-60
Jurkat and A549 cell lysates
Primary antibody: TA366399 (MRPS28 Antibody)
at dilution 1/650
Secondary antibody: Goat anti rabbit IgG at
1/5000 dilution
Exposure time: 10 seconds



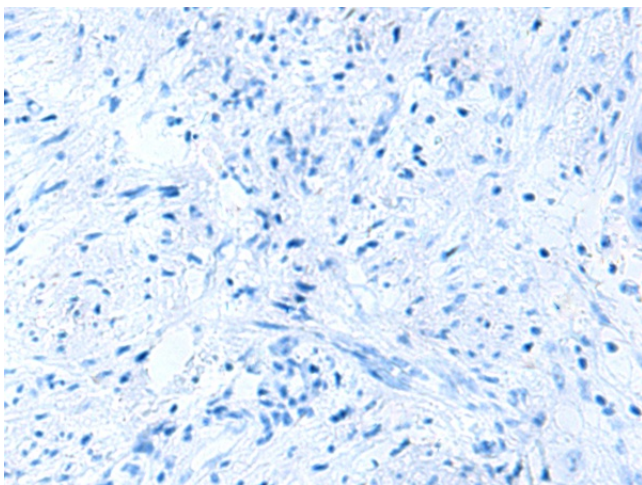
Immunohistochemistry of paraffin-embedded
Human colorectal cancer tissue using TA366399
(MRPS28 Antibody) at dilution 1/105 (Original
magnification: $\times 200$)



Immunohistochemistry of paraffin-embedded Human colorectal cancer tissue using TA366399 (MRPS28 Antibody) at dilution 1/105, treated with fusion protein. (Original magnification: ×200)



Immunohistochemistry of paraffin-embedded Human cervical cancer tissue using TA366399 (MRPS28 Antibody) at dilution 1/105 (Original magnification: ×200)



Immunohistochemistry of paraffin-embedded Human cervical cancer tissue using TA366399 (MRPS28 Antibody) at dilution 1/105, treated with fusion protein. (Original magnification: ×200)