

## Product datasheet for **TA366397**

### TNNI1 Rabbit Polyclonal Antibody

#### Product data:

Product Type:	Primary Antibodies
Applications:	IHC, WB
Recommended Dilution:	WB: 1000-5000 WB positive control: Mouse skeletal muscle tissue lysate IHC: 50-100 Positive control: Human liver cancer Predicted cell location: Cytoplasm
Reactivity:	Human, Mouse, Rat
Host:	Rabbit
Isotype:	IgG
Clonality:	Polyclonal
Immunogen:	Fusion protein of human TNNI1
Formulation:	pH7.4 PBS, 0.05% NaN <sub>3</sub> , 40% Glycerol
Concentration:	lot specific
Purification:	Antigen affinity purification
Conjugation:	Unconjugated
Storage:	Store at -20°C.
Stability:	1 year
Predicted Protein Size:	21 kDa
Gene Name:	troponin I1, slow skeletal type
Database Link:	<a href="#">Entrez Gene 7135 Human P19237</a>



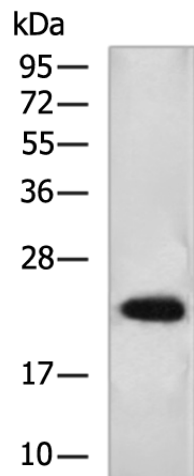
[View online »](#)

**Background:**

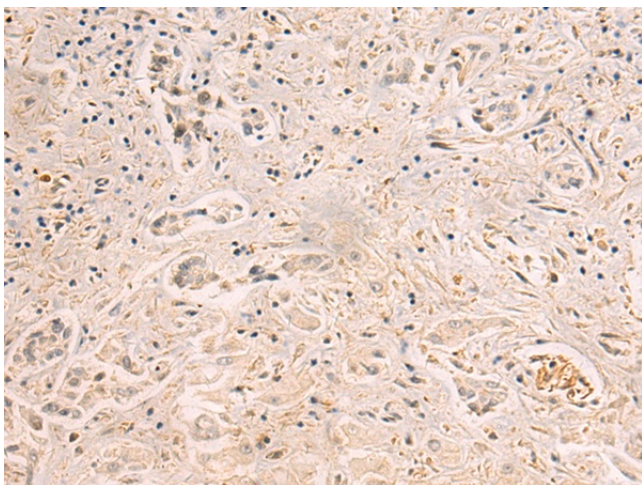
Troponin proteins associate with tropomyosin and regulate the calcium sensitivity of the myofibril contractile apparatus of striated muscles. Troponin I (TnI), along with troponin T (TnT) and troponin C (TnC), is one of 3 subunits that form the troponin complex of the thin filaments of striated muscle. TnI is the inhibitory subunit; blocking actin-myosin interactions and thereby mediating striated muscle relaxation. The TnI subfamily contains three genes: TnI-skeletal-fast-twitch, TnI-skeletal-slow-twitch, and TnI-cardiac. The TnI-fast and TnI-slow genes are expressed in fast-twitch and slow-twitch skeletal muscle fibers, respectively, while the TnI-cardiac gene is expressed exclusively in cardiac muscle tissue. This gene encodes the Troponin-I-skeletal-slow-twitch protein. This gene is expressed in cardiac and skeletal muscle during early development but is restricted to slow-twitch skeletal muscle fibers in adults. The encoded protein prevents muscle contraction by inhibiting calcium-mediated conformational changes in actin-myosin complexes.

**Synonyms:**

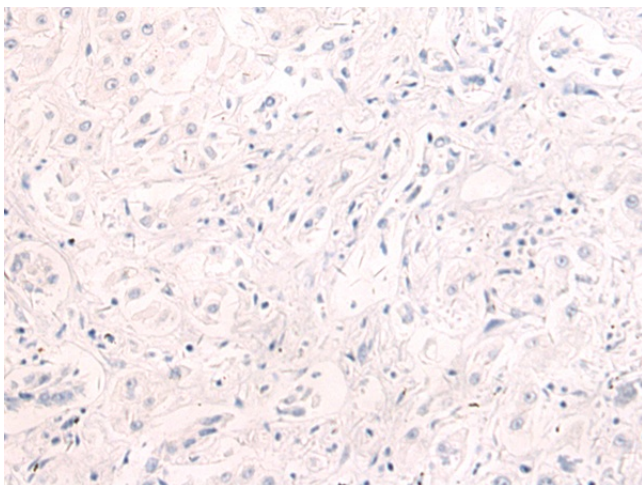
DKFZp451O223; OTTHUMP00000033877; OTTHUMP00000033910; SSTNI; TNN1

**Product images:**

Gel: 8%SDS-PAGE  
Lysate: 40 µg  
Lane: Mouse skeletal muscle tissue lysate  
Primary antibody: TA366397 (TNNI1 Antibody) at dilution 1/1000  
Secondary antibody: Goat anti rabbit IgG at 1/5000 dilution  
Exposure time: 10 seconds



Immunohistochemistry of paraffin-embedded Human liver cancer tissue using TA366397 (TNNI1 Antibody) at dilution 1/120 (Original magnification:  $\times 200$ )



Immunohistochemistry of paraffin-embedded Human liver cancer tissue using TA366397 (TNNI1 Antibody) at dilution 1/120, treated with fusion protein. (Original magnification:  $\times 200$ )