

Product datasheet for **TA366394**

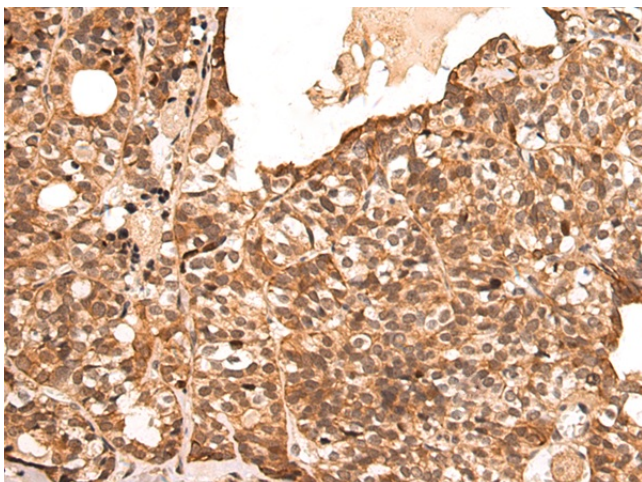
SAP30L Rabbit Polyclonal Antibody

Product data:

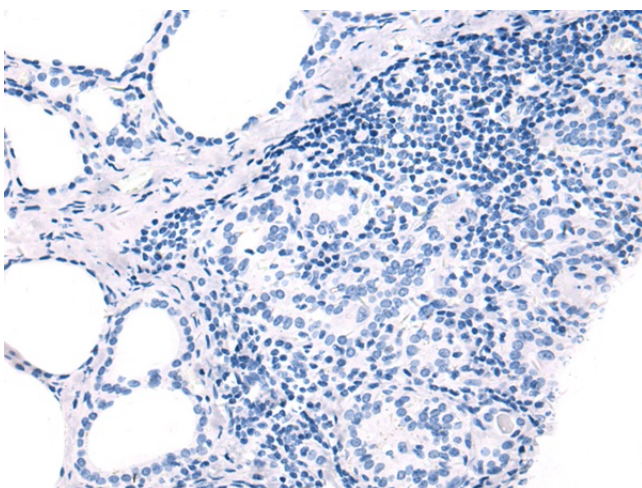
Product Type:	Primary Antibodies
Applications:	IHC
Recommended Dilution:	IHC: 100-300 Positive control: Human thyroid cancer Predicted cell location: Nucleus
Reactivity:	Human, Mouse
Host:	Rabbit
Isotype:	IgG
Clonality:	Polyclonal
Immunogen:	Fusion protein of human SAP30L
Formulation:	pH7.4 PBS, 0.05% NaN ₃ , 40% Glycerol
Concentration:	lot specific
Purification:	Antigen affinity purification
Conjugation:	Unconjugated
Storage:	Store at -20°C.
Stability:	1 year
Gene Name:	SAP30-like
Database Link:	Entrez Gene 79685 Human Q9HAJ7
Background:	Involved in the functional recruitment of the class 1 Sin3-histone deacetylase complex (HDAC) to the nucleolus.
Synonyms:	DKFZp667L2214; FLJ11526; FLJ23595; FLJ36497; NS4ATP2; SAP30-like



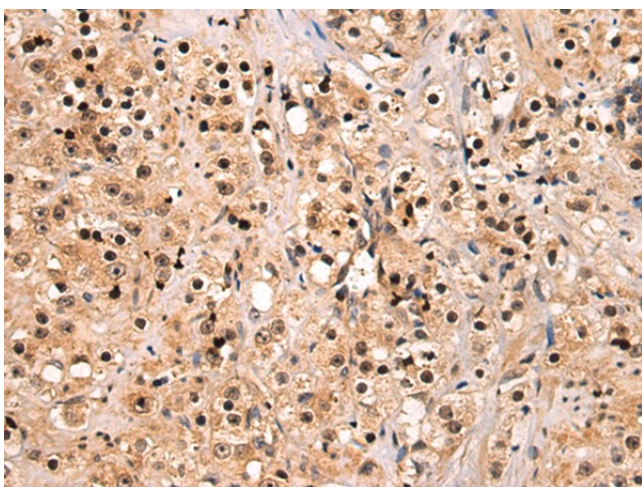
[View online »](#)

Product images:

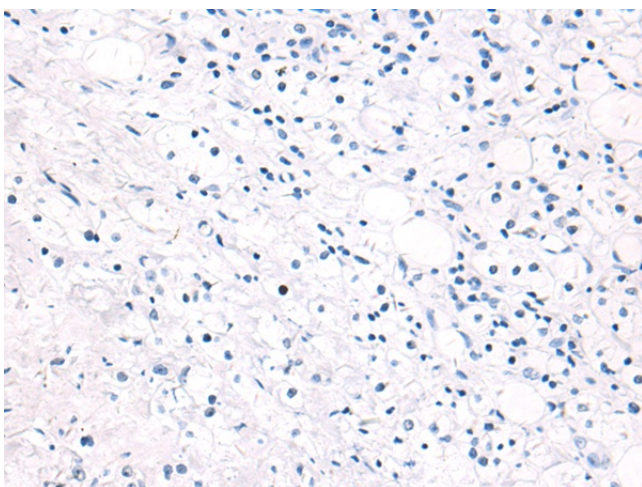
Immunohistochemistry of paraffin-embedded Human thyroid cancer tissue using TA366394 (SAP30L Antibody) at dilution 1/95 (Original magnification: $\times 200$)



Immunohistochemistry of paraffin-embedded Human thyroid cancer tissue using TA366394 (SAP30L Antibody) at dilution 1/95, treated with fusion protein. (Original magnification: $\times 200$)



Immunohistochemistry of paraffin-embedded Human prostate cancer tissue using TA366394 (SAP30L Antibody) at dilution 1/95 (Original magnification: x200)



Immunohistochemistry of paraffin-embedded Human prostate cancer tissue using TA366394 (SAP30L Antibody) at dilution 1/95, treated with fusion protein. (Original magnification: x200)