

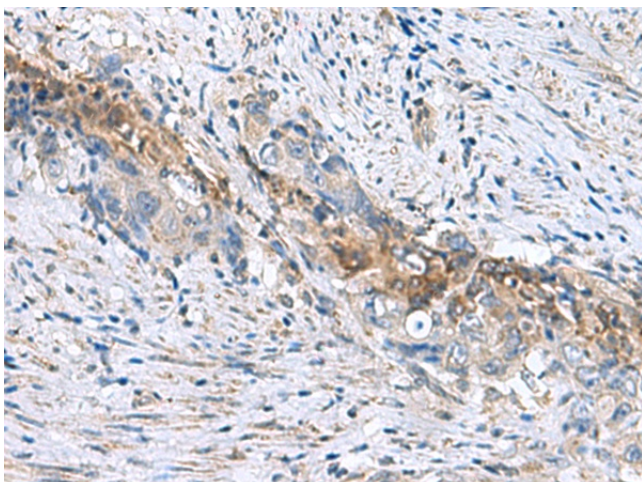
Product datasheet for **TA366393**

RNF208 Rabbit Polyclonal Antibody

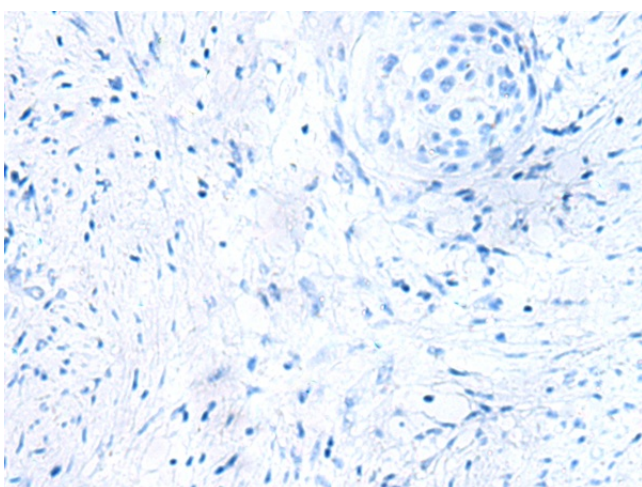
Product data:

Product Type:	Primary Antibodies
Applications:	IHC
Recommended Dilution:	IHC: 50-100 Positive control: Human cervical cancer Predicted cell location: Cytoplasm
Reactivity:	Human, Mouse
Host:	Rabbit
Isotype:	IgG
Clonality:	Polyclonal
Immunogen:	Fusion protein of human RNF208
Formulation:	pH7.4 PBS, 0.05% NaN ₃ , 40% Glycerol
Concentration:	lot specific
Purification:	Antigen affinity purification
Conjugation:	Unconjugated
Storage:	Store at -20°C.
Stability:	1 year
Gene Name:	ring finger protein 208
Database Link:	Entrez Gene 727800 Human Q9H0X6
Background:	The function of this protein remains unknown.
Synonyms:	DKFZP761H1710; MGC88636; OTTHUMP00000162589

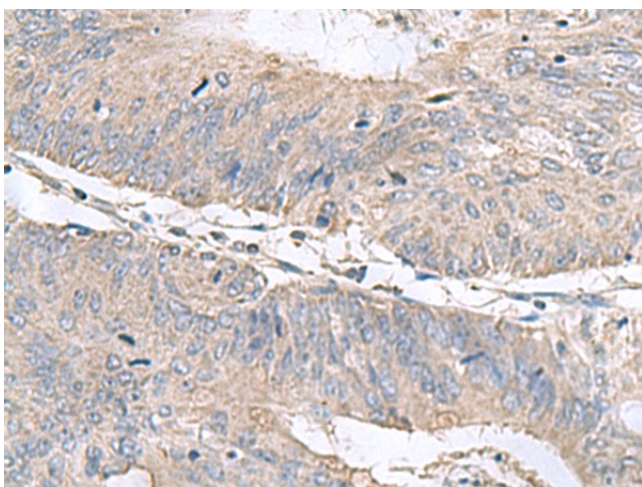
[View online »](#)

Product images:


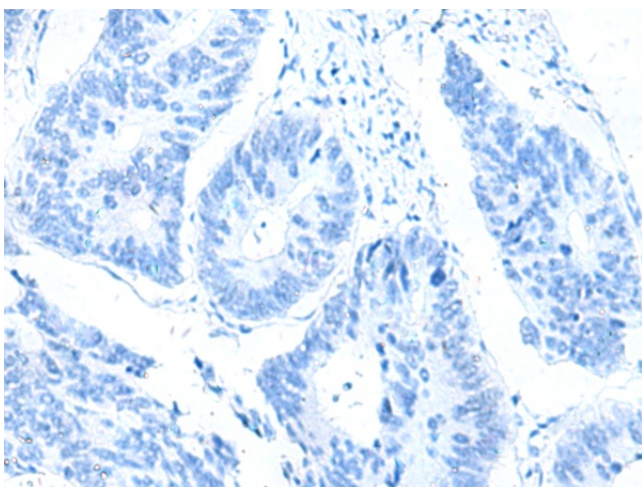
Immunohistochemistry of paraffin-embedded Human cervical cancer tissue using TA366393 (RNF208 Antibody) at dilution 1/55 (Original magnification: ×200)



Immunohistochemistry of paraffin-embedded Human cervical cancer tissue using TA366393 (RNF208 Antibody) at dilution 1/55, treated with fusion protein. (Original magnification: ×200)



Immunohistochemistry of paraffin-embedded Human colorectal cancer tissue using TA366393 (RNF208 Antibody) at dilution 1/55 (Original magnification: ×200)



Immunohistochemistry of paraffin-embedded Human colorectal cancer tissue using TA366393 (RNF208 Antibody) at dilution 1/55, treated with fusion protein. (Original magnification: ×200)