

## Product datasheet for **TA366388**

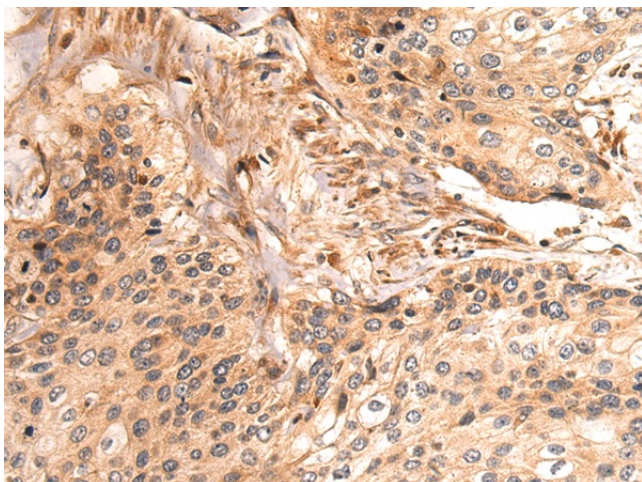
### HYI Rabbit Polyclonal Antibody

#### Product data:

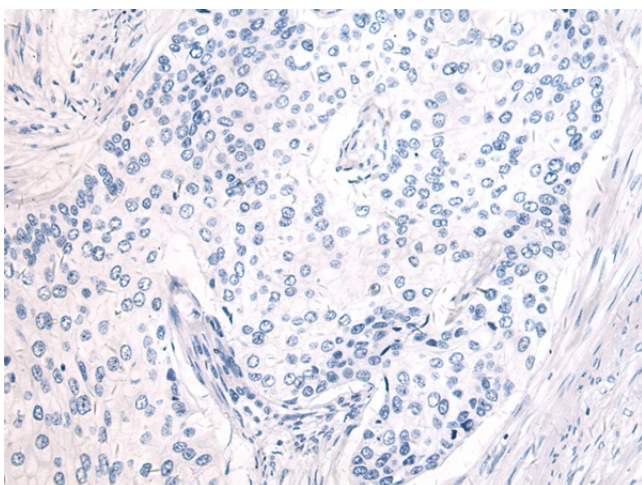
|                       |   |
|-----------------------|---|
| Product Type:         | Primary Antibodies  |
| Applications:         | IHC   |
| Recommended Dilution: | IHC: 50-200<br>Positive control: Human cervical cancer<br>Predicted cell location: Cytoplasm  |
| Reactivity:           | Human, Mouse  |
| Host:                 | Rabbit  |
| Isotype:              | IgG   |
| Clonality:            | Polyclonal  |
| Immunogen:            | Fusion protein of human HYI   |
| Formulation:          | pH7.4 PBS, 0.05% NaN <sub>3</sub> , 40% Glycerol  |
| Concentration:        | lot specific  |
| Purification:         | Antigen affinity purification   |
| Conjugation:          | Unconjugated  |
| Storage:              | Store at -20°C.   |
| Stability:            | 1 year  |
| Gene Name:            | hydroxypyruvate isomerase (putative)  |
| Database Link:        | <a href="#">Entrez Gene 81888 Human Q5T013</a>  |
| Background:           | This gene encodes a putative hydroxypyruvate isomerase, which likely catalyzes the conversion of hydroxypyruvate to 2-hydroxy-3-oxopropanoate, and may be involved in carbohydrate transport and metabolism. Alternatively spliced transcript variants encoding different isoforms have been found for this gene. |
| Synonyms:             | HT036; MGC20767; OTTHUMP00000008689   |



[View online »](#)

**Product images:**

Immunohistochemistry of paraffin-embedded Human cervical cancer tissue using TA366388 (HYI Antibody) at dilution 1/50 (Original magnification:  $\times 200$ )



Immunohistochemistry of paraffin-embedded Human cervical cancer tissue using TA366388 (HYI Antibody) at dilution 1/50, treated with fusion protein. (Original magnification:  $\times 200$ )