

## Product datasheet for **TA366379**

### Secretory lectin ZG16 (ZG16) Rabbit Polyclonal Antibody

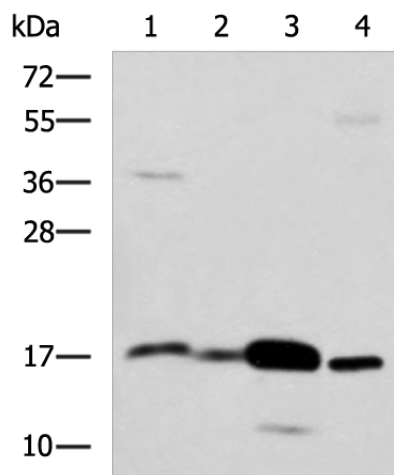
#### Product data:

Product Type:	Primary Antibodies
Applications:	IHC, WB
Recommended Dilution:	WB: 1000-5000 WB positive control: Mouse Pancreas tissue, Mouse small intestines tissue, Mouse large intestine tissue, Human sigmoid tissue lysates IHC: 100-300 Positive control: Human liver cancer Predicted cell location: Cytoplasm
Reactivity:	Human, Mouse
Host:	Rabbit
Isotype:	IgG
Clonality:	Polyclonal
Immunogen:	Fusion protein of human ZG16
Formulation:	pH7.4 PBS, 0.05% NaN <sub>3</sub> , 40% Glycerol
Concentration:	lot specific
Purification:	Antigen affinity purification
Conjugation:	Unconjugated
Storage:	Store at -20°C.
Stability:	1 year
Predicted Protein Size:	18 kDa
Gene Name:	zymogen granule protein 16
Database Link:	<a href="#">Entrez Gene 653808 Human O60844</a>
Background:	May play a role in protein trafficking. May act as a linker molecule between the submembranous matrix on the luminal side of zymogen granule membrane (ZGM) and aggregated secretory proteins during granule formation in the TGN.
Synonyms:	FLJ43571; FLJ92276; hZG16; JCLN; JCLN1; MGC34820; MGC183567; ZG16A

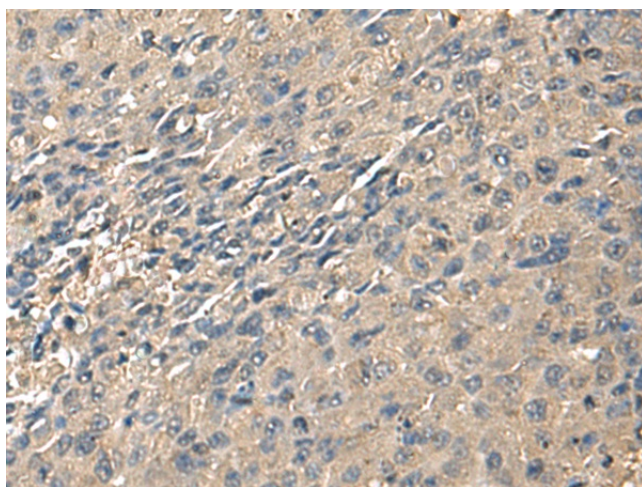


[View online »](#)

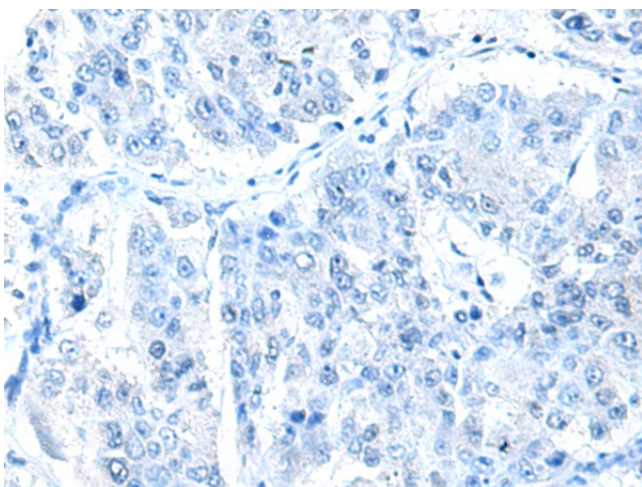
**Product images:**



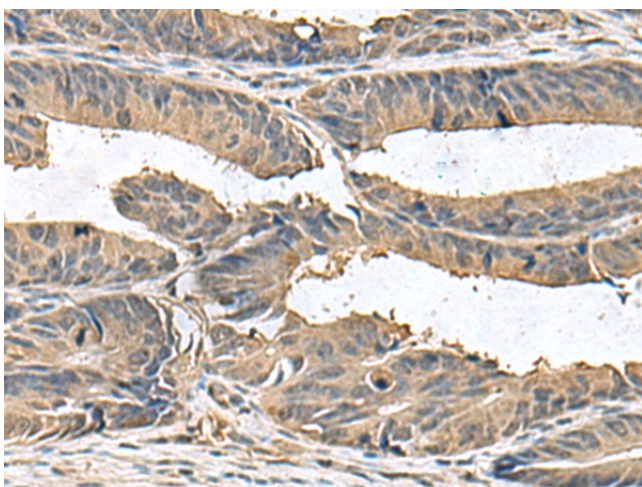
Gel: 12%SDS-PAGE  
 Lysate: 40 µg  
 Lane 1-4: Mouse Pancreas tissue  
 Mouse small intestines tissue  
 Mouse large intestine tissue  
 Human sigmoid tissue lysates  
 Primary antibody: TA366379 (ZG16 Antibody) at dilution 1/1350  
 Secondary antibody: Goat anti rabbit IgG at 1/5000 dilution  
 Exposure time: 30 seconds



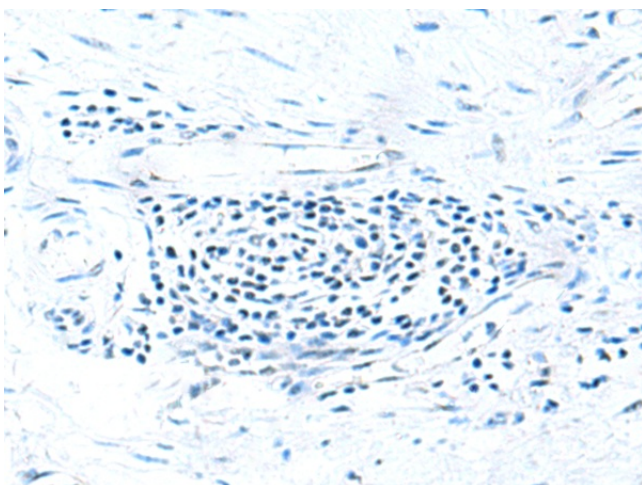
Immunohistochemistry of paraffin-embedded Human liver cancer tissue using TA366379 (ZG16 Antibody) at dilution 1/95 (Original magnification: ×200)



Immunohistochemistry of paraffin-embedded Human liver cancer tissue using TA366379 (ZG16 Antibody) at dilution 1/95, treated with fusion protein. (Original magnification: x200)



Immunohistochemistry of paraffin-embedded Human colorectal cancer tissue using TA366379 (ZG16 Antibody) at dilution 1/95 (Original magnification: x200)



Immunohistochemistry of paraffin-embedded Human colorectal cancer tissue using TA366379 (ZG16 Antibody) at dilution 1/95, treated with fusion protein. (Original magnification: x200)