

## Product datasheet for **TA366376S**

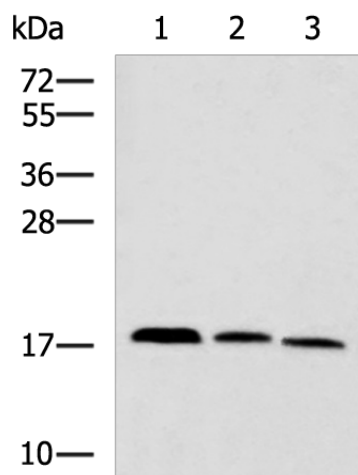
### CPLX3 Rabbit Polyclonal Antibody

#### Product data:

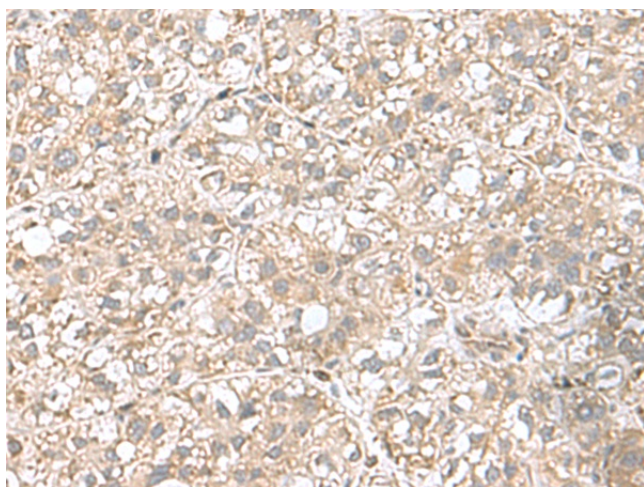
Product Type:	Primary Antibodies
Applications:	IHC, WB
Recommended Dilution:	WB: 1000-5000 WB positive control: Mouse kidney tissue, Rat brain tissue, Mouse liver tissue lysates IHC: 50-200 Positive control: Human liver cancer Predicted cell location: Cytoplasm
Reactivity:	Human, Mouse, Rat
Host:	Rabbit
Isotype:	IgG
Clonality:	Polyclonal
Immunogen:	Fusion protein of human CPLX3
Formulation:	pH7.4 PBS, 0.05% NaN <sub>3</sub> , 40% Glycerol
Purification:	Antigen affinity purification
Conjugation:	Unconjugated
Storage:	Store at -20°C.
Stability:	1 year
Predicted Protein Size:	17 kDa
Gene Name:	complexin 3
Database Link:	<a href="#">Entrez Gene 594855 Human Q8WVH0</a>
Background:	Positively regulates a late step in synaptic vesicle exocytosis.
Synonyms:	CPX-III; CPXIII; FLJ13993; Nbla11589



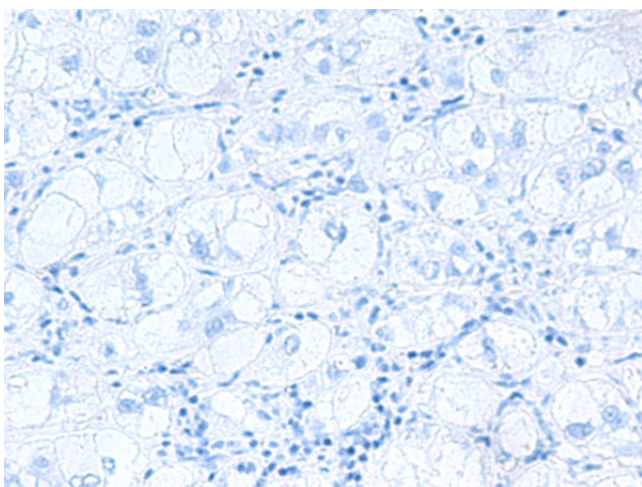
[View online »](#)

**Product images:**


Gel: 12%SDS-PAGE  
 Lysate: 40 µg  
 Lane 1-3: Mouse kidney tissue  
 Rat brain tissue  
 Mouse liver tissue lysates  
 Primary antibody: [TA366376] (CPLX3 Antibody)  
 at dilution 1/950  
 Secondary antibody: Goat anti rabbit IgG at  
 1/5000 dilution  
 Exposure time: 1 minute



Immunohistochemistry of paraffin-embedded  
 Human liver cancer tissue using [TA366376]  
 (CPLX3 Antibody) at dilution 1/65 (Original  
 magnification: ×200)



Immunohistochemistry of paraffin-embedded Human liver cancer tissue using [TA366376] (CPLX3 Antibody) at dilution 1/65, treated with fusion protein. (Original magnification: ×200)