

Product datasheet for **TA366376**

CPLX3 Rabbit Polyclonal Antibody

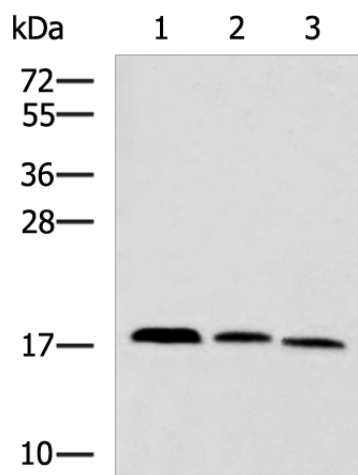
Product data:

Product Type:	Primary Antibodies
Applications:	IHC, WB
Recommended Dilution:	WB: 1000-5000 WB positive control: Mouse kidney tissue, Rat brain tissue, Mouse liver tissue lysates IHC: 50-200 Positive control: Human liver cancer Predicted cell location: Cytoplasm
Reactivity:	Human, Mouse, Rat
Host:	Rabbit
Isotype:	IgG
Clonality:	Polyclonal
Immunogen:	Fusion protein of human CPLX3
Formulation:	pH7.4 PBS, 0.05% NaN ₃ , 40% Glycerol
Concentration:	lot specific
Purification:	Antigen affinity purification
Conjugation:	Unconjugated
Storage:	Store at -20°C.
Stability:	1 year
Predicted Protein Size:	17 kDa
Gene Name:	complexin 3
Database Link:	Entrez Gene 594855 Human Q8WVH0
Background:	Positively regulates a late step in synaptic vesicle exocytosis.
Synonyms:	CPX-III; CPXIII; FLJ13993; Nbla11589

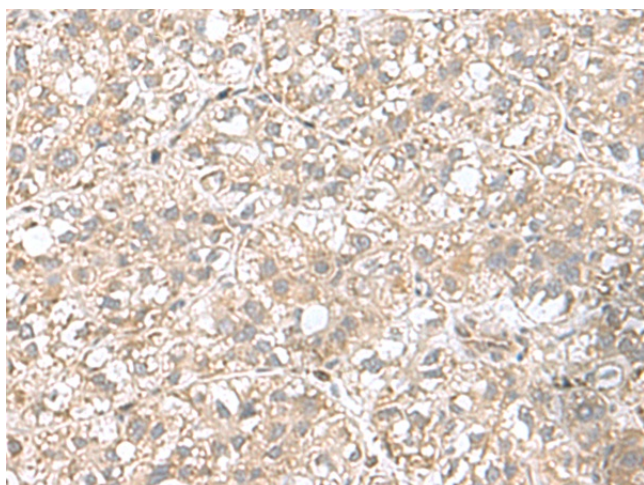


[View online »](#)

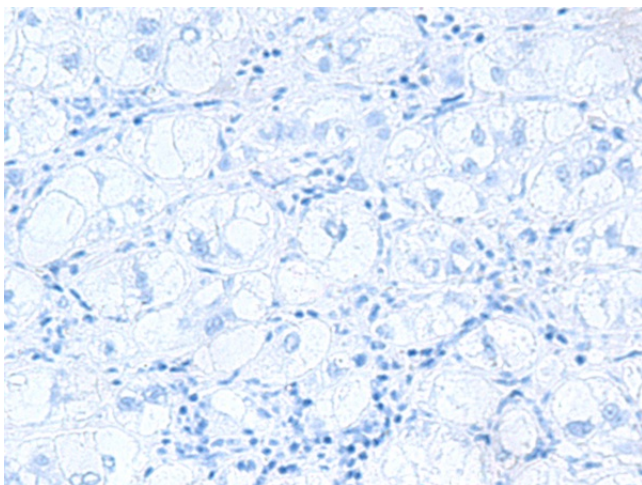
Product images:



Gel: 12%SDS-PAGE
Lysate: 40 μ g
Lane 1-3: Mouse kidney tissue
Rat brain tissue
Mouse liver tissue lysates
Primary antibody: TA366376 (CPLX3 Antibody) at dilution 1/950
Secondary antibody: Goat anti rabbit IgG at 1/5000 dilution
Exposure time: 1 minute



Immunohistochemistry of paraffin-embedded Human liver cancer tissue using TA366376 (CPLX3 Antibody) at dilution 1/65 (Original magnification: \times 200)



Immunohistochemistry of paraffin-embedded Human liver cancer tissue using TA366376 (CPLX3 Antibody) at dilution 1/65, treated with fusion protein. (Original magnification: $\times 200$)