

Product datasheet for **TA366375**

Ribonuclease A (RNASE1) Rabbit Polyclonal Antibody

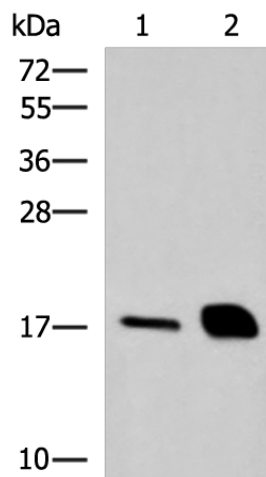
Product data:

| | |
|-------------------------|---|
| Product Type: | Primary Antibodies |
| Applications: | WB |
| Recommended Dilution: | WB: 500-2000 WB positive control: Mouse pancreas tissue and Rat pancreas tissue lysates |
| Reactivity: | Human, Mouse, Rat |
| Host: | Rabbit |
| Isotype: | IgG |
| Clonality: | Polyclonal |
| Immunogen: | Fusion protein of human RNASE1 |
| Formulation: | pH7.4 PBS, 0.05% NaN ₃ , 40% Glycerol |
| Concentration: | lot specific |
| Purification: | Antigen affinity purification |
| Conjugation: | Unconjugated |
| Storage: | Store at -20°C. |
| Stability: | 1 year |
| Predicted Protein Size: | 18 kDa |
| Gene Name: | ribonuclease A family member 1, pancreatic |
| Database Link: | Entrez Gene 6035 Human P07998 |
| Background: | This gene encodes a member of the pancreatic-type of secretory ribonucleases, a subset of the ribonuclease A superfamily. The encoded endonuclease cleaves internal phosphodiester RNA bonds on the 3'-side of pyrimidine bases. It prefers poly(C) as a substrate and hydrolyzes 2',3'-cyclic nucleotides, with a pH optimum near 8.0. The encoded protein is monomeric and more commonly acts to degrade ds-RNA over ss-RNA. Alternative splicing occurs at this locus and four transcript variants encoding the same protein have been identified. |
| Synonyms: | HP-RNase; MGC12408; RIB-1; RIB1; RNS1 |



[View online »](#)

Product images:



Gel: 12%SDS-PAGE

Lysate: 40 μ g

Lane 1-2: Mouse pancreas tissue and Rat pancreas tissue lysates

Primary antibody: TA366375 (RNASE1 Antibody) at dilution 1/550

Secondary antibody: Goat anti rabbit IgG at 1/5000 dilution

Exposure time: 7 seconds