

## Product datasheet for **TA366351S**

### PHPT1 Rabbit Polyclonal Antibody

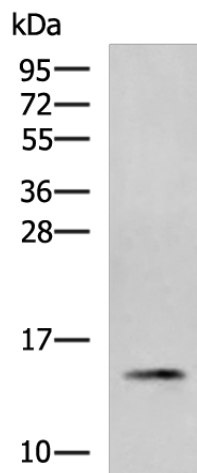
#### Product data:

Product Type:	Primary Antibodies
Applications:	IHC, WB
Recommended Dilution:	WB: 1000-5000 WB positive control: 231 cell lysate IHC: 200-300 Positive control: Human colorectal cancer Predicted cell location: Cytoplasm
Reactivity:	Human, Mouse
Host:	Rabbit
Isotype:	IgG
Clonality:	Polyclonal
Immunogen:	Fusion protein of human PHPT1
Formulation:	pH7.4 PBS, 0.05% NaN <sub>3</sub> , 40% Glycerol
Purification:	Antigen affinity purification
Conjugation:	Unconjugated
Storage:	Store at -20°C.
Stability:	1 year
Predicted Protein Size:	14 kDa
Gene Name:	phosphohistidine phosphatase 1
Database Link:	<a href="#">Entrez Gene 29085 Human Q9NRX4</a>
Background:	This gene encodes an enzyme that catalyzes the reversible dephosphorylation of histidine residues in proteins. It may be involved in the dephosphorylation of G-beta and ATP citrate lyase and in negatively regulating CD4 T lymphocytes by dephosphorylation and inhibition of KCa3.1 channels. Alternative splicing results in multiple transcript variants.
Synonyms:	1700008C22Rik; bA216L13.10; CGI-202; DKFZp564M173; HSPC141; OTTHUMP00000022620; PHP14

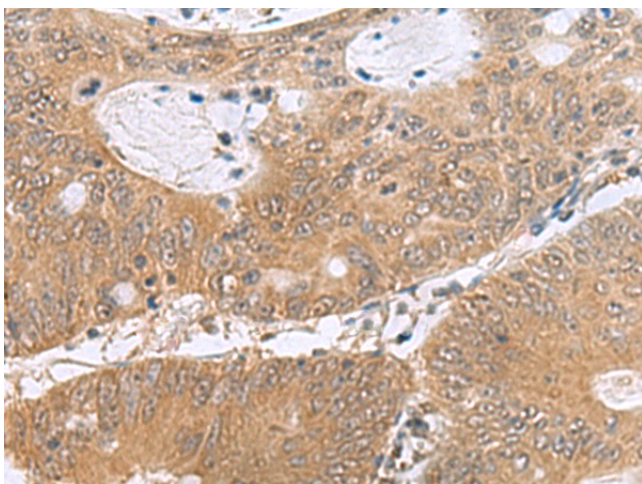


[View online »](#)

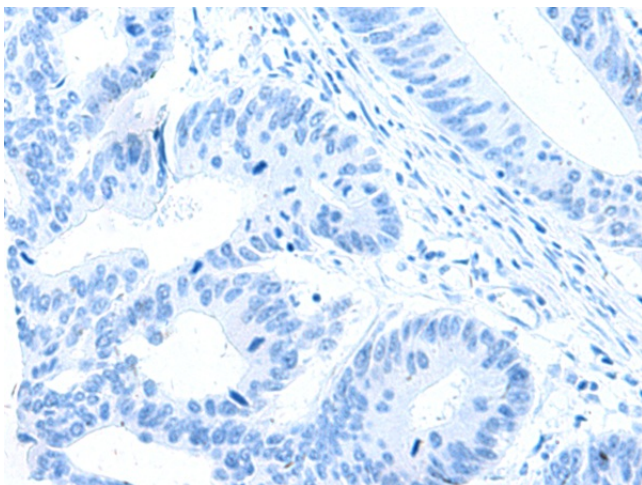
## Product images:



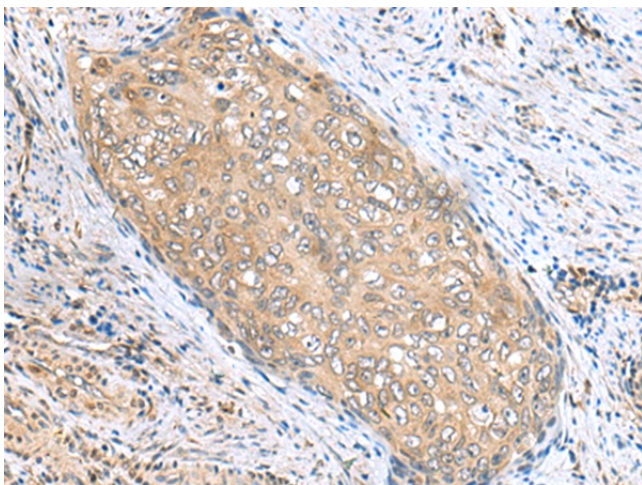
Gel: 12%SDS-PAGE  
Lysate: 40  $\mu$ g  
Lane: 231 cell lysate  
Primary antibody: [TA366351] (PHPT1 Antibody) at dilution 1/800  
Secondary antibody: Goat anti rabbit IgG at 1/5000 dilution  
Exposure time: 10 seconds



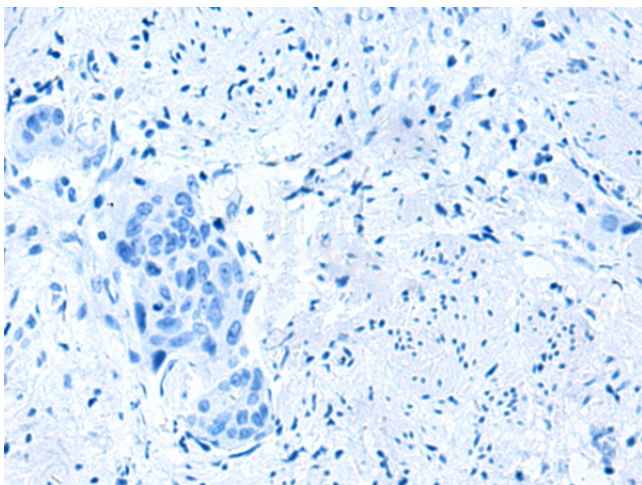
Immunohistochemistry of paraffin-embedded Human colorectal cancer tissue using [TA366351] (PHPT1 Antibody) at dilution 1/170 (Original magnification:  $\times$ 200)



Immunohistochemistry of paraffin-embedded Human colorectal cancer tissue using [TA366351] (PHPT1 Antibody) at dilution 1/170, treated with fusion protein. (Original magnification: ×200)



Immunohistochemistry of paraffin-embedded Human cervical cancer tissue using [TA366351] (PHPT1 Antibody) at dilution 1/170 (Original magnification: ×200)



Immunohistochemistry of paraffin-embedded Human cervical cancer tissue using [TA366351] (PHPT1 Antibody) at dilution 1/170, treated with fusion protein. (Original magnification: ×200)