

## Product datasheet for **TA366346**

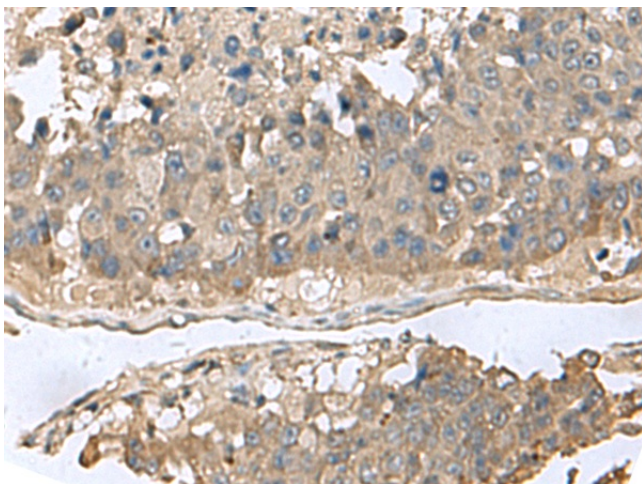
### **GABARAPL2 Rabbit Polyclonal Antibody**

#### **Product data:**

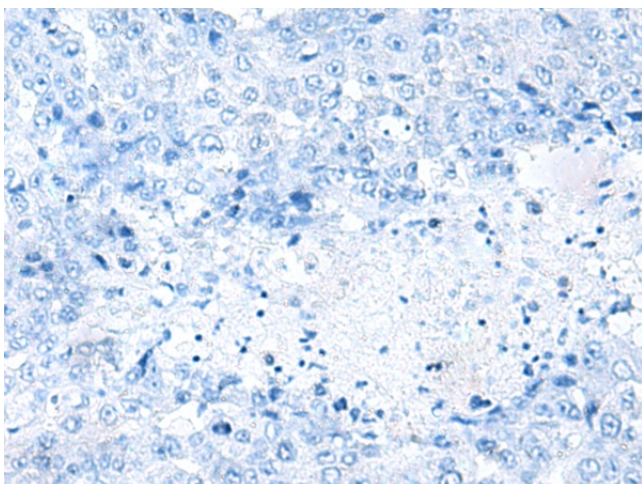
|                              |  |
|------------------------------|--|
| <b>Product Type:</b>         | Primary Antibodies   |
| <b>Applications:</b>         | IHC  |
| <b>Recommended Dilution:</b> | IHC: 50-300<br>Positive control: Human liver cancer<br>Predicted cell location: Cytoplasm  |
| <b>Reactivity:</b>           | Human, Mouse, Rat  |
| <b>Host:</b>                 | Rabbit   |
| <b>Isotype:</b>              | IgG  |
| <b>Clonality:</b>            | Polyclonal   |
| <b>Immunogen:</b>            | Fusion protein of human GABARAPL2  |
| <b>Formulation:</b>          | pH7.4 PBS, 0.05% NaN <sub>3</sub> , 40% Glycerol   |
| <b>Concentration:</b>        | lot specific   |
| <b>Purification:</b>         | Antigen affinity purification  |
| <b>Conjugation:</b>          | Unconjugated   |
| <b>Storage:</b>              | Store at -20°C.  |
| <b>Stability:</b>            | 1 year   |
| <b>Gene Name:</b>            | GABA type A receptor associated protein like 2   |
| <b>Database Link:</b>        | <a href="#">Entrez Gene 11345 Human P60520</a>   |
| <b>Background:</b>           | Ubiquitin-like modifier involved in intra-Golgi traffic. Modulates intra-Golgi transport through coupling between NSF activity and SNAREs activation. It first stimulates the ATPase activity of NSF which in turn stimulates the association with GOSR1 (By similarity). Involved in autophagy. Plays a role in mitophagy which contributes to regulate mitochondrial quantity and quality by eliminating the mitochondria to a basal level to fulfill cellular energy requirements and preventing excess ROS production. Whereas LC3s are involved in elongation of the phagophore membrane, the GABARAP/GATE-16 subfamily is essential for a later stage in autophagosome maturation. |
| <b>Synonyms:</b>             | ATG8; FLC3A; GATE-16; GATE16; GEF-2; GEF2  |



[View online »](#)

**Product images:**

Immunohistochemistry of paraffin-embedded Human liver cancer tissue using TA366346 (GABARAPL2 Antibody) at dilution 1/60 (Original magnification:  $\times 200$ )



Immunohistochemistry of paraffin-embedded Human liver cancer tissue using TA366346 (GABARAPL2 Antibody) at dilution 1/60, treated with fusion protein. (Original magnification:  $\times 200$ )