

## Product datasheet for **TA366345S**

### SH3YL1 Rabbit Polyclonal Antibody

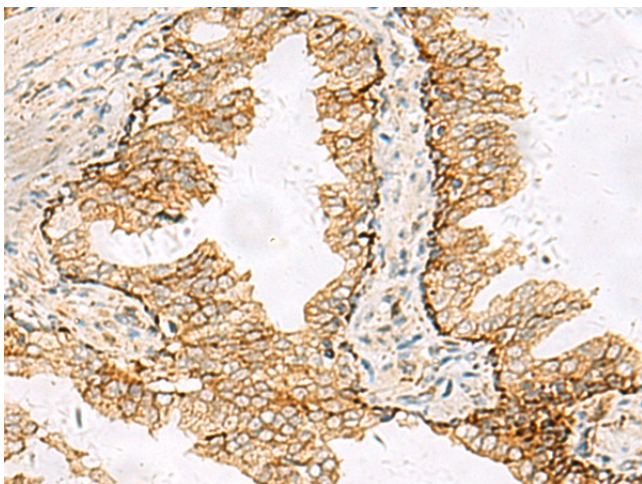
#### Product data:

Product Type:	Primary Antibodies
Applications:	IHC
Recommended Dilution:	IHC: 50-200 Positive control: Human prostate cancer Predicted cell location: Cytoplasm and Cell membrane
Reactivity:	Human, Mouse, Rat
Host:	Rabbit
Isotype:	IgG
Clonality:	Polyclonal
Immunogen:	Fusion protein of human SH3YL1
Formulation:	pH7.4 PBS, 0.05% NaN <sub>3</sub> , 40% Glycerol
Purification:	Antigen affinity purification
Conjugation:	Unconjugated
Storage:	Store at -20°C.
Stability:	1 year
Gene Name:	SH3 and SYLF domain containing 1
Database Link:	<a href="#">Entrez Gene 26751 Human Q96HL8</a>
Background:	The exact function of SH3YL1 remains unknown.
Synonyms:	DKFZP586F1318; FLJ39121; RAY

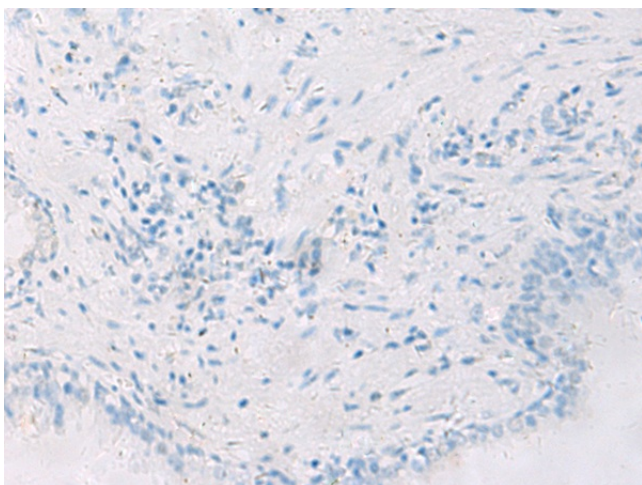


[View online »](#)

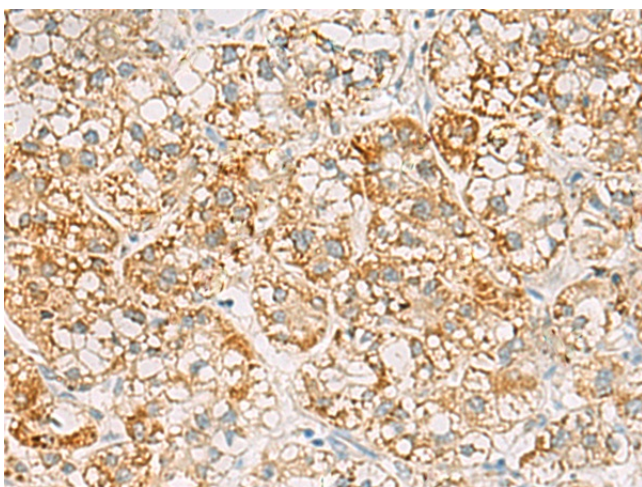
## Product images:



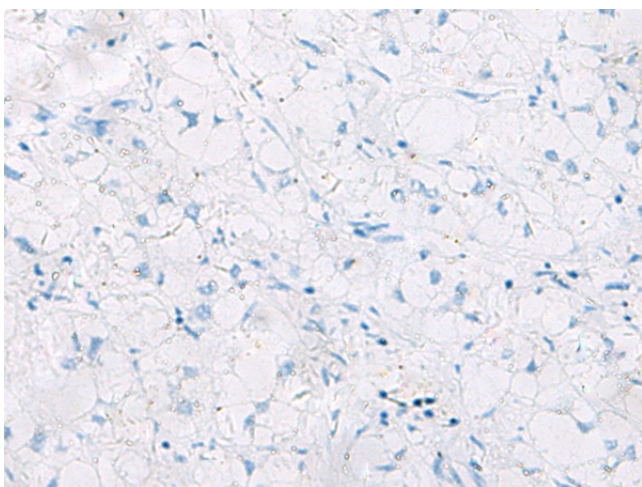
Immunohistochemistry of paraffin-embedded Human prostate cancer tissue using [TA366345] (SH3YL1 Antibody) at dilution 1/55 (Original magnification: ×200)



Immunohistochemistry of paraffin-embedded Human prostate cancer tissue using [TA366345] (SH3YL1 Antibody) at dilution 1/55, treated with fusion protein. (Original magnification: ×200)



Immunohistochemistry of paraffin-embedded Human liver cancer tissue using [TA366345] (SH3YL1 Antibody) at dilution 1/55 (Original magnification: ×200)



Immunohistochemistry of paraffin-embedded Human liver cancer tissue using [TA366345] (SH3YL1 Antibody) at dilution 1/55, treated with fusion protein. (Original magnification: ×200)