

Product datasheet for **TA366342**

TMEM141 Rabbit Polyclonal Antibody

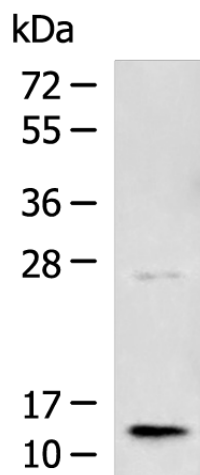
Product data:

Product Type:	Primary Antibodies
Applications:	IHC, WB
Recommended Dilution:	WB: 500-2000 WB positive control: Human liver tissue lysate IHC: 50-300 Positive control: Human esophagus cancer Predicted cell location: Cytoplasm
Reactivity:	Human
Host:	Rabbit
Isotype:	IgG
Clonality:	Polyclonal
Immunogen:	Fusion protein of human TMEM141
Formulation:	pH7.4 PBS, 0.05% NaN ₃ , 40% Glycerol
Concentration:	lot specific
Purification:	Antigen affinity purification
Conjugation:	Unconjugated
Storage:	Store at -20°C.
Stability:	1 year
Predicted Protein Size:	12 kDa
Gene Name:	transmembrane protein 141
Database Link:	Entrez Gene 85014 Human Q96I45
Background:	The function of this protein remains unknown.
Synonyms:	MGC14141; RP11-216L13.7

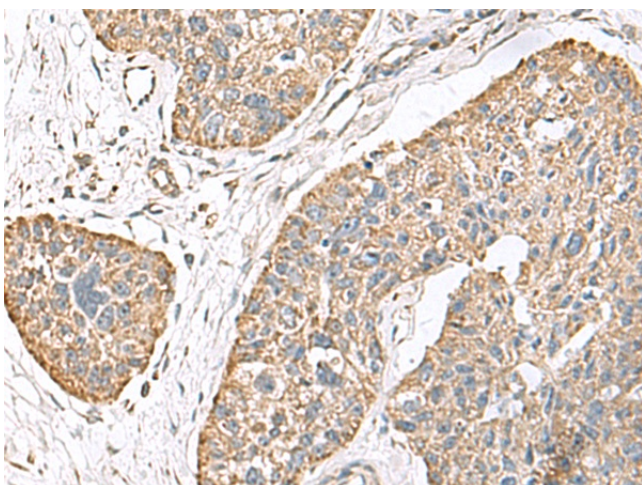


[View online »](#)

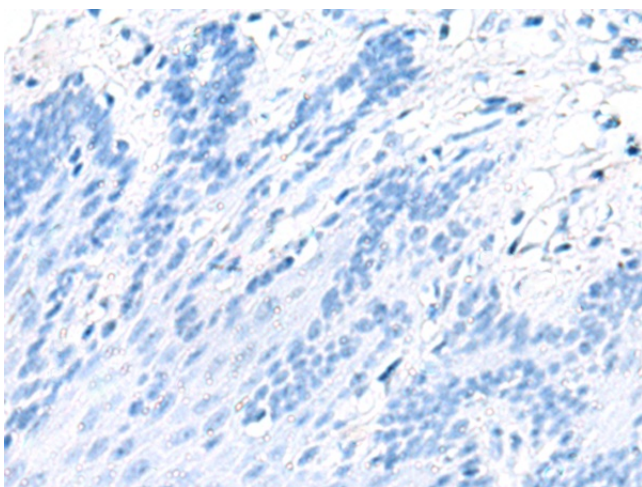
Product images:



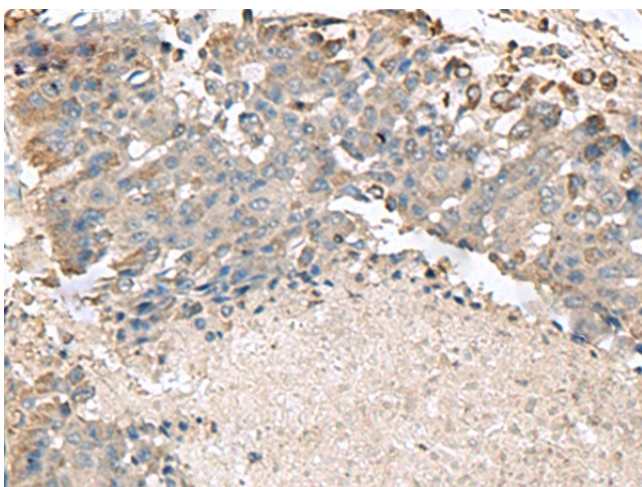
Gel: 12%SDS-PAGE
 Lysate: 40 µg
 Lane: Human liver tissue lysate
 Primary antibody: TA366342 (TMEM141 Antibody) at dilution 1/1000
 Secondary antibody: Goat anti rabbit IgG at 1/5000 dilution
 Exposure time: 90 seconds



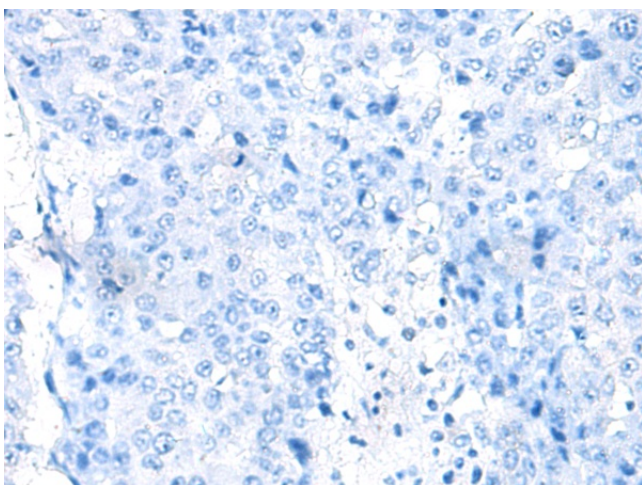
Immunohistochemistry of paraffin-embedded Human esophagus cancer tissue using TA366342 (TMEM141 Antibody) at dilution 1/70 (Original magnification: ×200)



Immunohistochemistry of paraffin-embedded Human esophagus cancer tissue using TA366342 (TMEM141 Antibody) at dilution 1/70, treated with fusion protein. (Original magnification: ×200)



Immunohistochemistry of paraffin-embedded Human liver cancer tissue using TA366342 (TMEM141 Antibody) at dilution 1/70 (Original magnification: ×200)



Immunohistochemistry of paraffin-embedded Human liver cancer tissue using TA366342 (TMEM141 Antibody) at dilution 1/70, treated with fusion protein. (Original magnification: ×200)