

Product datasheet for **TA366340S**

PCBD1 Rabbit Polyclonal Antibody

Product data:

Product Type:	Primary Antibodies
Applications:	IHC, WB
Recommended Dilution:	WB: 500-2000 WB positive control: Human fetal liver tissue lysate IHC: 80-400 Positive control: Human breast cancer Predicted cell location: Cytoplasm and Nucleus
Reactivity:	Human, Mouse, Rat
Host:	Rabbit
Isotype:	IgG
Clonality:	Polyclonal
Immunogen:	Fusion protein of human PCBD1
Formulation:	pH7.4 PBS, 0.05% NaN ₃ , 40% Glycerol
Purification:	Antigen affinity purification
Conjugation:	Unconjugated
Storage:	Store at -20°C.
Stability:	1 year
Predicted Protein Size:	12 kDa
Gene Name:	pterin-4 alpha-carbinolamine dehydratase 1
Database Link:	Entrez Gene 5092 Human P61457

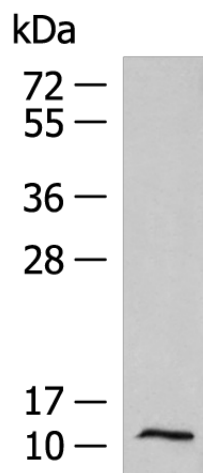
Background: This gene encodes a member of the pterin-4-alpha-carbinolamine dehydratase family. The encoded protein has been identified as a moonlighting protein based on its ability to perform mechanistically distinct functions. The encoded protein functions as both a dehydratase involved in tetrahydrobiopterin biosynthesis, and as a cofactor for HNF1A-dependent transcription. A deficiency of this enzyme leads to hyperphenylalaninemia. Alternative splicing results in multiple transcript variants.

Synonyms: DCoH; PCBD; PCD; PHS

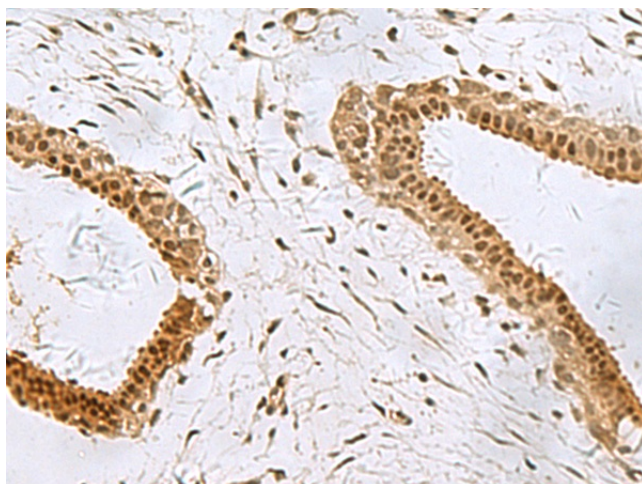


[View online »](#)

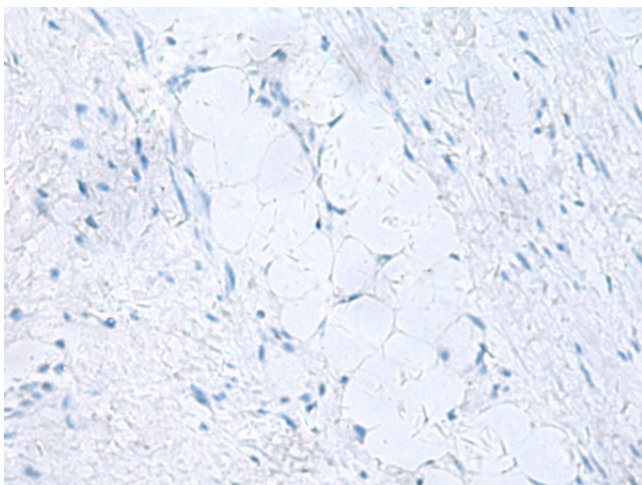
Product images:



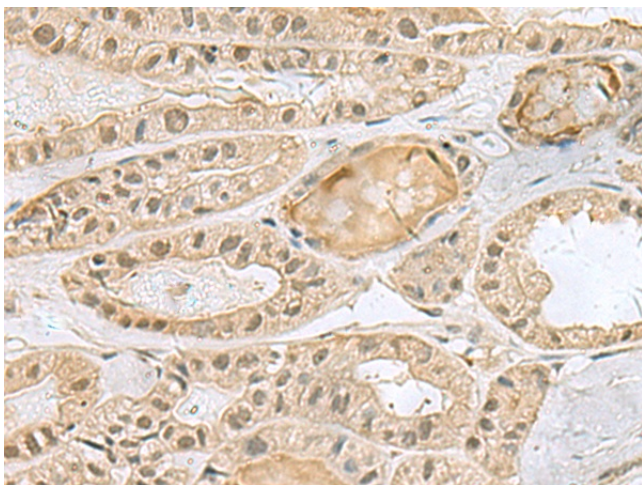
Gel: 12%SDS-PAGE
Lysate: 40 μ g
Lane: Human fetal liver tissue lysate
Primary antibody: [TA366340] (PCBD1 Antibody)
at dilution 1/1000
Secondary antibody: Goat anti rabbit IgG at
1/5000 dilution
Exposure time: 30 seconds



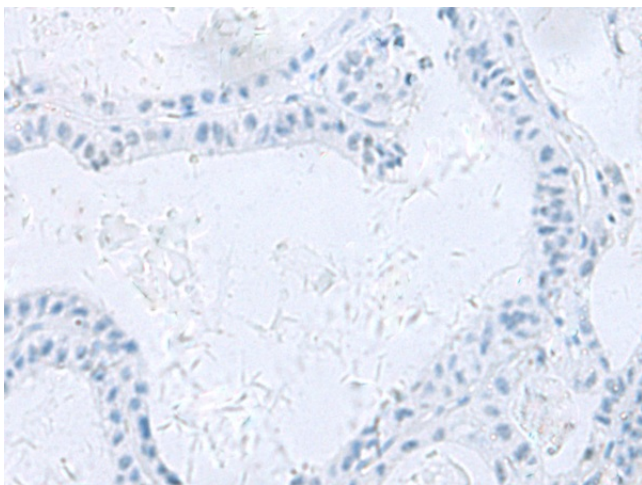
Immunohistochemistry of paraffin-embedded
Human breast cancer tissue using [TA366340]
(PCBD1 Antibody) at dilution 1/90 (Original
magnification: \times 200)



Immunohistochemistry of paraffin-embedded Human breast cancer tissue using [TA366340] (PCBD1 Antibody) at dilution 1/90, treated with fusion protein. (Original magnification: ×200)



Immunohistochemistry of paraffin-embedded Human thyroid cancer tissue using [TA366340] (PCBD1 Antibody) at dilution 1/90 (Original magnification: ×200)



Immunohistochemistry of paraffin-embedded Human thyroid cancer tissue using [TA366340] (PCBD1 Antibody) at dilution 1/90, treated with fusion protein. (Original magnification: ×200)