

## Product datasheet for **TA366340**

### PCBD1 Rabbit Polyclonal Antibody

#### Product data:

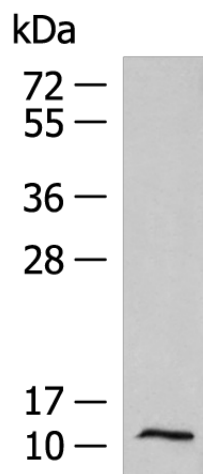
Product Type:	Primary Antibodies
Applications:	IHC, WB
Recommended Dilution:	WB: 500-2000 WB positive control: Human fetal liver tissue lysate IHC: 80-400 Positive control: Human breast cancer Predicted cell location: Cytoplasm and Nucleus
Reactivity:	Human, Mouse, Rat
Host:	Rabbit
Isotype:	IgG
Clonality:	Polyclonal
Immunogen:	Fusion protein of human PCBD1
Formulation:	pH7.4 PBS, 0.05% NaN <sub>3</sub> , 40% Glycerol
Concentration:	lot specific
Purification:	Antigen affinity purification
Conjugation:	Unconjugated
Storage:	Store at -20°C.
Stability:	1 year
Predicted Protein Size:	12 kDa
Gene Name:	pterin-4 alpha-carbinolamine dehydratase 1
Database Link:	<a href="#">Entrez Gene 5092 Human P61457</a>
Background:	This gene encodes a member of the pterin-4-alpha-carbinolamine dehydratase family. The encoded protein has been identified as a moonlighting protein based on its ability to perform mechanistically distinct functions. The encoded protein functions as both a dehydratase involved in tetrahydrobiopterin biosynthesis, and as a cofactor for HNF1A-dependent transcription. A deficiency of this enzyme leads to hyperphenylalaninemia. Alternative splicing results in multiple transcript variants.



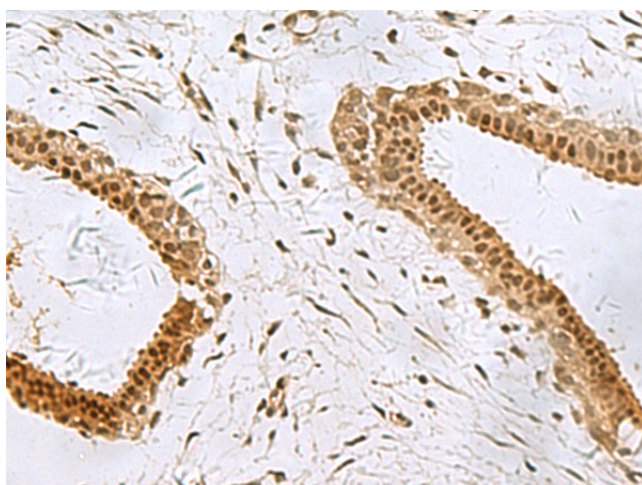
[View online »](#)

Synonyms: DCoH; PCBD; PCD; PHS

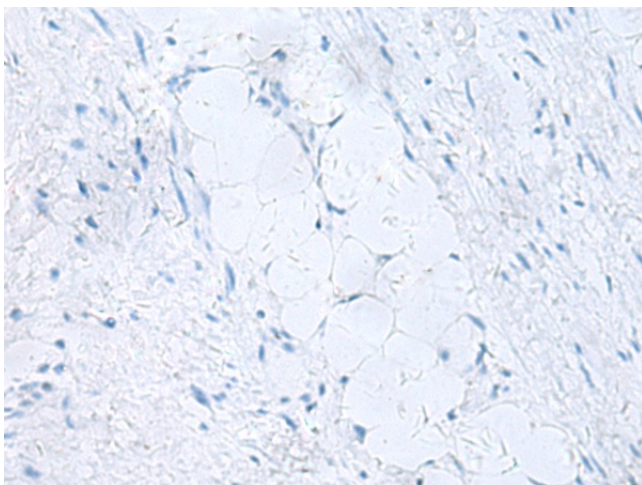
### Product images:



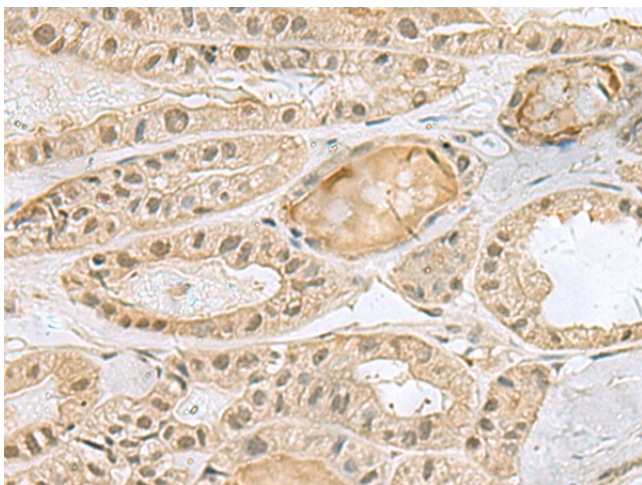
Gel: 12%SDS-PAGE  
Lysate: 40  $\mu$ g  
Lane: Human fetal liver tissue lysate  
Primary antibody: TA366340 (PCBD1 Antibody) at dilution 1/1000  
Secondary antibody: Goat anti rabbit IgG at 1/5000 dilution  
Exposure time: 30 seconds



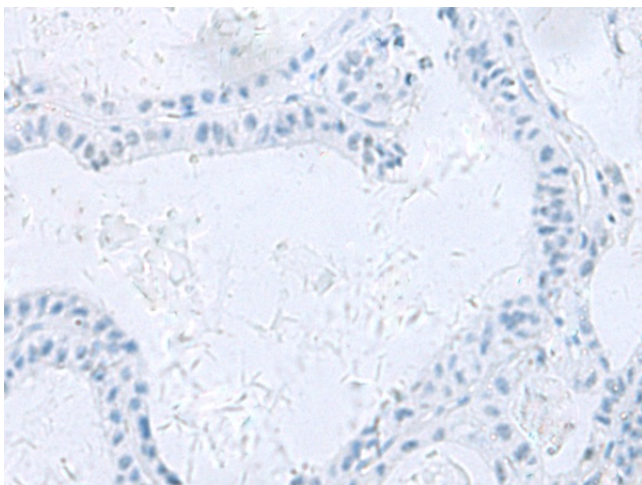
Immunohistochemistry of paraffin-embedded Human breast cancer tissue using TA366340 (PCBD1 Antibody) at dilution 1/90 (Original magnification:  $\times$ 200)



Immunohistochemistry of paraffin-embedded Human breast cancer tissue using TA366340 (PCBD1 Antibody) at dilution 1/90, treated with fusion protein. (Original magnification:  $\times 200$ )



Immunohistochemistry of paraffin-embedded Human thyroid cancer tissue using TA366340 (PCBD1 Antibody) at dilution 1/90 (Original magnification:  $\times 200$ )



Immunohistochemistry of paraffin-embedded Human thyroid cancer tissue using TA366340 (PCBD1 Antibody) at dilution 1/90, treated with fusion protein. (Original magnification:  $\times 200$ )