

Product datasheet for **TA366331**

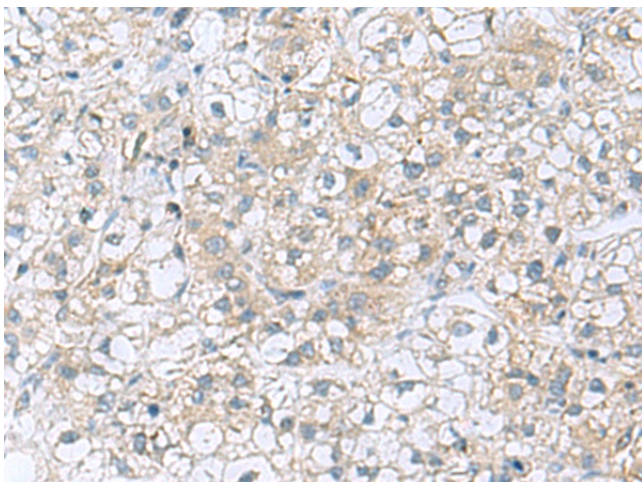
Trophinin (TRO) Rabbit Polyclonal Antibody

Product data:

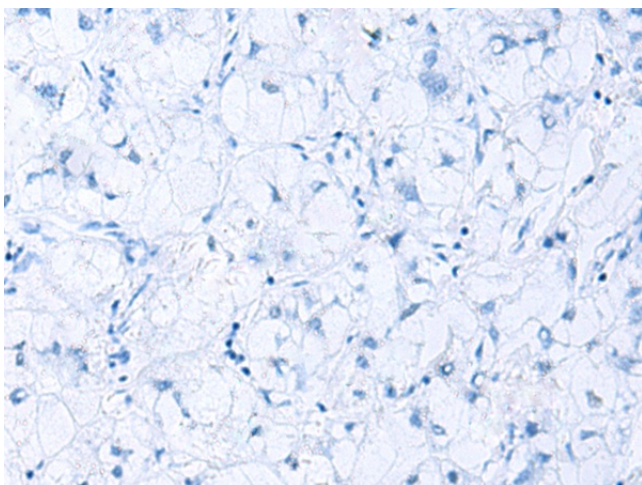
| | |
|-----------------------|--|
| Product Type: | Primary Antibodies |
| Applications: | IHC |
| Recommended Dilution: | IHC: 50-200 Positive control: Human liver cancer Predicted cell location: Cytoplasm |
| Reactivity: | Human |
| Host: | Rabbit |
| Isotype: | IgG |
| Clonality: | Polyclonal |
| Immunogen: | Fusion protein of human TRO |
| Formulation: | pH7.4 PBS, 0.05% NaN ₃ , 40% Glycerol |
| Concentration: | lot specific |
| Purification: | Antigen affinity purification |
| Conjugation: | Unconjugated |
| Storage: | Store at -20°C. |
| Stability: | 1 year |
| Gene Name: | trophinin |
| Database Link: | Entrez Gene 7216 Human Q12816 |
| Background: | This gene encodes a membrane protein that mediates cell adhesion between trophoblastic cells and the epithelial cells of the endometrium. The encoded protein participates in cell signalling during embryo implantation, and may also be involved in cancer formation. This gene is located near several other closely related genes on chromosome X. Alternative splicing results in multiple transcript variants. |
| Synonyms: | KIAA1114; MAGE-d3; MAGED3; magphinin; trophinin |



[View online »](#)

Product images:

Immunohistochemistry of paraffin-embedded Human liver cancer tissue using TA366331 (TRO Antibody) at dilution 1/80 (Original magnification: ×200)



Immunohistochemistry of paraffin-embedded Human liver cancer tissue using TA366331 (TRO Antibody) at dilution 1/80, treated with fusion protein. (Original magnification: ×200)