

## Product datasheet for **TA366328**

### **KIAA1434 (GPCPD1) Rabbit Polyclonal Antibody**

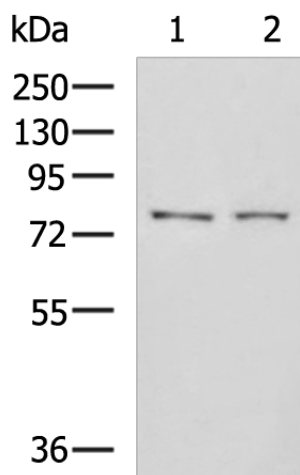
#### **Product data:**

Product Type:	Primary Antibodies
Applications:	IHC, WB
Recommended Dilution:	WB: 500-2000 WB positive control: K562 cell, Mouse liver tissue lysates IHC: 50-100 Positive control: Human thyroid cancer Predicted cell location: Cytoplasm
Reactivity:	Human, Mouse, Rat
Host:	Rabbit
Isotype:	IgG
Clonality:	Polyclonal
Immunogen:	Fusion protein of human GPCPD1
Formulation:	pH7.4 PBS, 0.05% NaN <sub>3</sub> , 40% Glycerol
Concentration:	lot specific
Purification:	Antigen affinity purification
Conjugation:	Unconjugated
Storage:	Store at -20°C.
Stability:	1 year
Predicted Protein Size:	76 kDa
Gene Name:	glycerophosphocholine phosphodiesterase 1
Database Link:	<a href="#">Entrez Gene 56261 Human Q9NPB8</a>
Background:	May be involved in the negative regulation of skeletal muscle differentiation, independently of its glycerophosphocholine phosphodiesterase activity.
Synonyms:	2310004G06Rik; 2310032D16Rik; AU015213; Gde5; mKIAA1434; Prei4; RGD735140

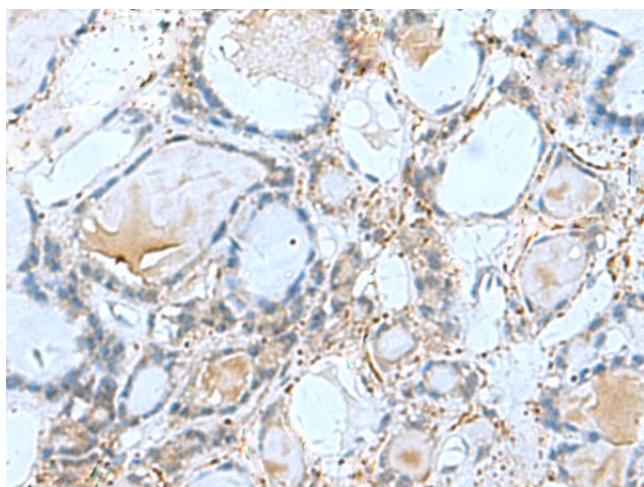


[View online »](#)

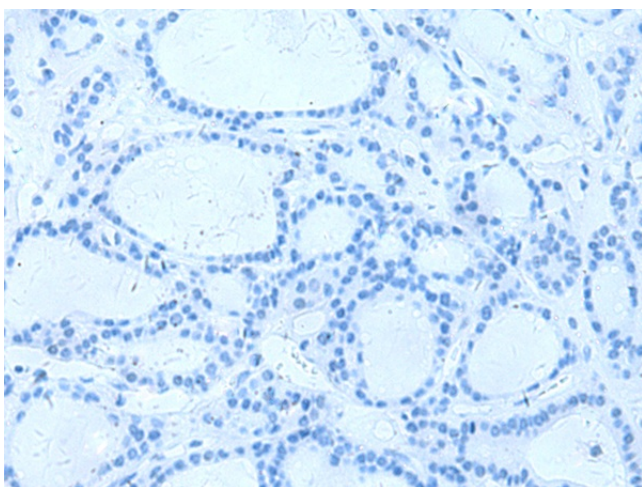
## Product images:



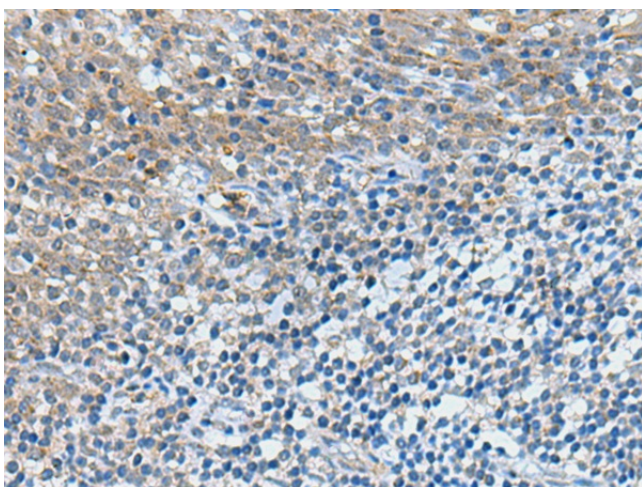
Gel: 8%SDS-PAGE  
Lysate: 40  $\mu$ g  
Lane 1-2: K562 cell  
Mouse liver tissue lysates  
Primary antibody: TA366328 (GPCPD1 Antibody)  
at dilution 1/650  
Secondary antibody: Goat anti rabbit IgG at  
1/5000 dilution  
Exposure time: 30 seconds



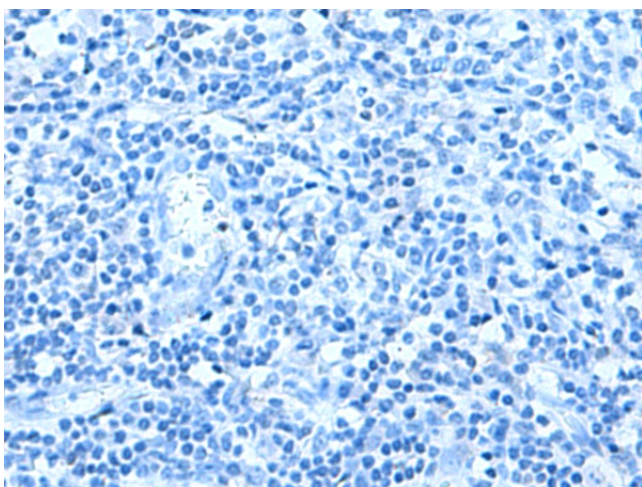
Immunohistochemistry of paraffin-embedded  
Human thyroid cancer tissue using TA366328  
(GPCPD1 Antibody) at dilution 1/50 (Original  
magnification:  $\times$ 200)



Immunohistochemistry of paraffin-embedded Human thyroid cancer tissue using TA366328 (GPCPD1 Antibody) at dilution 1/50, treated with fusion protein. (Original magnification:  $\times 200$ )



Immunohistochemistry of paraffin-embedded Human tonsil tissue using TA366328 (GPCPD1 Antibody) at dilution 1/50 (Original magnification:  $\times 200$ )



Immunohistochemistry of paraffin-embedded Human tonsil tissue using TA366328 (GPCPD1 Antibody) at dilution 1/50, treated with fusion protein. (Original magnification:  $\times 200$ )