

Product datasheet for **TA366327**

PPP2R1B Rabbit Polyclonal Antibody

Product data:

Product Type:	Primary Antibodies
Applications:	IHC
Recommended Dilution:	IHC: 50-200 Positive control: Human colorectal cancer Predicted cell location: Cytoplasm
Reactivity:	Human, Mouse, Rat
Host:	Rabbit
Isotype:	IgG
Clonality:	Polyclonal
Immunogen:	Fusion protein of human PPP2R1B
Formulation:	pH7.4 PBS, 0.05% NaN ₃ , 40% Glycerol
Concentration:	lot specific
Purification:	Antigen affinity purification
Conjugation:	Unconjugated
Storage:	Store at -20°C.
Stability:	1 year
Gene Name:	protein phosphatase 2 scaffold subunit Abeta
Database Link:	Entrez Gene 5519 Human P30154

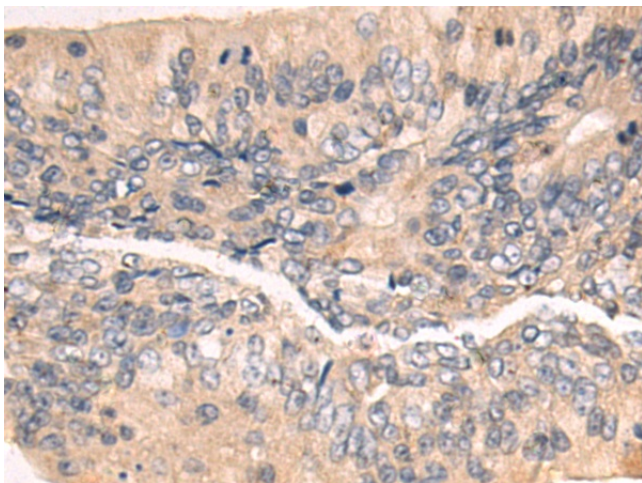
Background: This gene encodes a constant regulatory subunit of protein phosphatase 2. Protein phosphatase 2 is one of the four major Ser/Thr phosphatases, and it is implicated in the negative control of cell growth and division. It consists of a common heteromeric core enzyme, which is composed of a catalytic subunit and a constant regulatory subunit, that associates with a variety of regulatory subunits. The constant regulatory subunit A serves as a scaffolding molecule to coordinate the assembly of the catalytic subunit and a variable regulatory B subunit. This gene encodes a beta isoform of the constant regulatory subunit A. Mutations in this gene have been associated with some lung and colon cancers. Alternatively spliced transcript variants have been described.



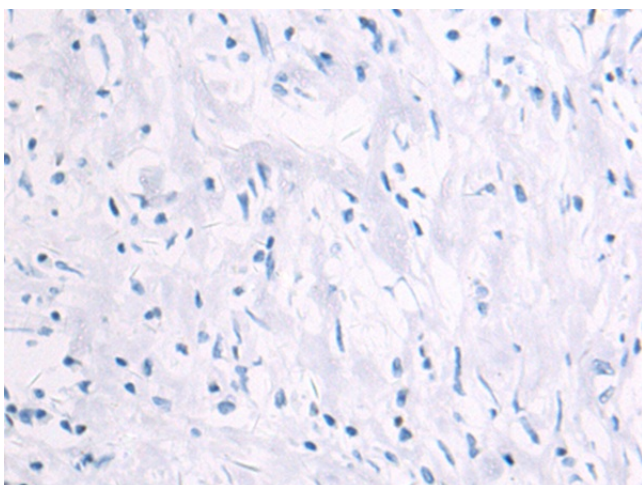
[View online »](#)

Synonyms: MGC26454; PP2A-A-beta; PR65B

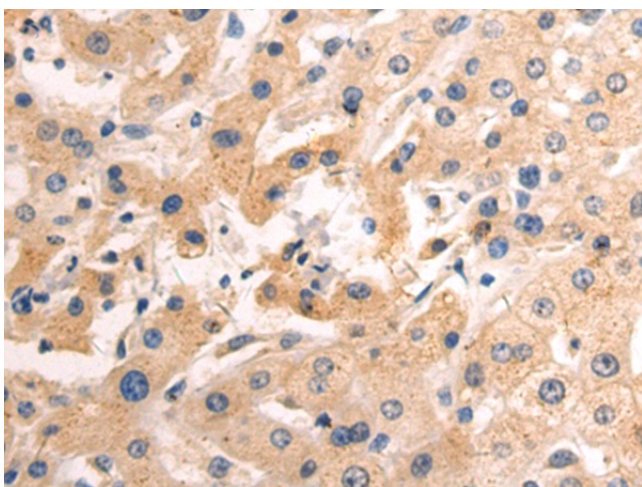
Product images:



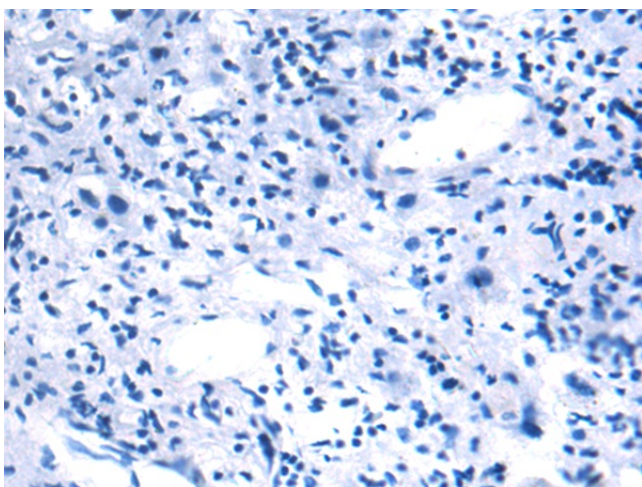
Immunohistochemistry of paraffin-embedded Human colorectal cancer tissue using TA366327 (PPP2R1B Antibody) at dilution 1/50 (Original magnification: x200)



Immunohistochemistry of paraffin-embedded Human colorectal cancer tissue using TA366327 (PPP2R1B Antibody) at dilution 1/50, treated with fusion protein. (Original magnification: x200)



Immunohistochemistry of paraffin-embedded Human liver cancer tissue using TA366327 (PPP2R1B Antibody) at dilution 1/50 (Original magnification: $\times 200$)



Immunohistochemistry of paraffin-embedded Human liver cancer tissue using TA366327 (PPP2R1B Antibody) at dilution 1/50, treated with fusion protein. (Original magnification: $\times 200$)