

Product datasheet for **TA366325S**

PPEF1 Rabbit Polyclonal Antibody

Product data:

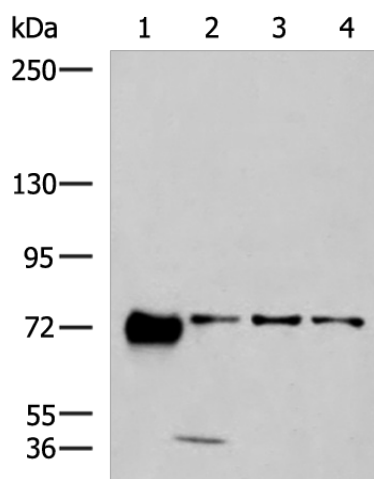
Product Type:	Primary Antibodies
Applications:	IHC, WB
Recommended Dilution:	WB: 1000-5000 WB positive control: Human fetal brain tissue, 293T, A549 and A172 cell lysates IHC: 80-400 Positive control: Human liver cancer Predicted cell location: Cytoplasm
Reactivity:	Human
Host:	Rabbit
Isotype:	IgG
Clonality:	Polyclonal
Immunogen:	Fusion protein of human PPEF1
Formulation:	pH7.4 PBS, 0.05% NaN ₃ , 40% Glycerol
Purification:	Antigen affinity purification
Conjugation:	Unconjugated
Storage:	Store at -20°C.
Stability:	1 year
Predicted Protein Size:	76 kDa
Gene Name:	protein phosphatase with EF-hand domain 1
Database Link:	Entrez Gene 5475 Human O14829
Background:	This gene encodes a member of the serine/threonine protein phosphatase with EF-hand motif family. The protein contains a protein phosphatase catalytic domain, and at least two EF-hand calcium-binding motifs in its C terminus. Although its substrate(s) is unknown, the encoded protein has been suggested to play a role in specific sensory neuron function and/or development. This gene shares high sequence similarity with the Drosophila retinal degeneration C (rdgC) gene. Several alternatively spliced transcript variants, each encoding a distinct isoform, have been described.



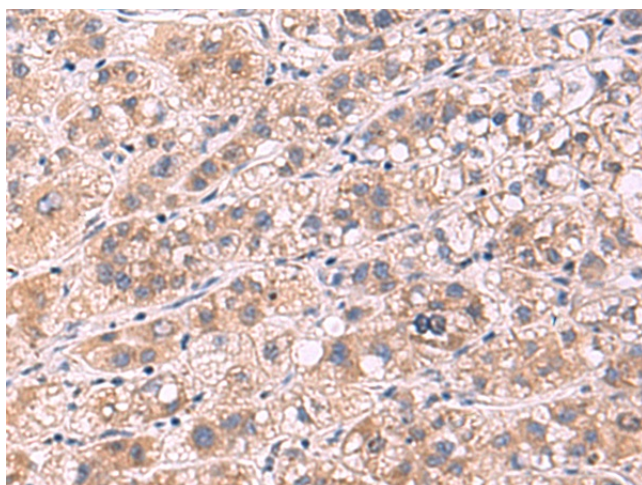
[View online »](#)

Synonyms: OTTHUMP00000023006; PP7; PPEF; PPEF-1; PPP7C

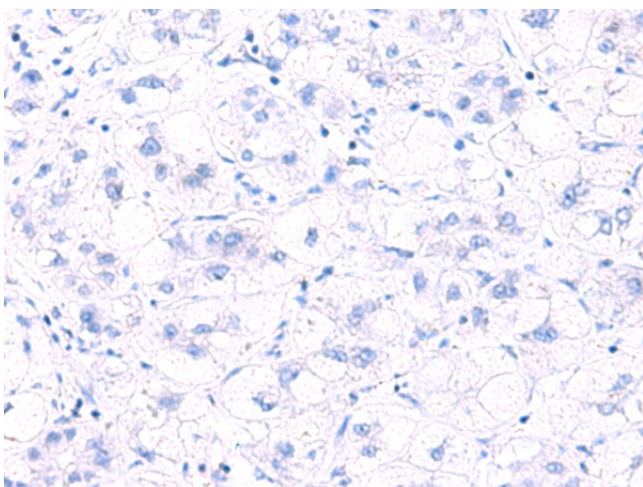
Product images:



Gel: 6%SDS-PAGE
 Lysate: 40 µg
 Lane 1-4: Human fetal brain tissue
 293T
 A549 and A172 cell lysates
 Primary antibody: [TA366325] (PPEF1 Antibody) at dilution 1/1300
 Secondary antibody: Goat anti rabbit IgG at 1/5000 dilution
 Exposure time: 1 minute



Immunohistochemistry of paraffin-embedded Human liver cancer tissue using [TA366325] (PPEF1 Antibody) at dilution 1/90 (Original magnification: ×200)



Immunohistochemistry of paraffin-embedded Human liver cancer tissue using [TA366325] (PPEF1 Antibody) at dilution 1/90, treated with fusion protein. (Original magnification: ×200)