

## Product datasheet for **TA366325**

### PPEF1 Rabbit Polyclonal Antibody

#### Product data:

Product Type:	Primary Antibodies
Applications:	IHC, WB
Recommended Dilution:	WB: 1000-5000 WB positive control: Human fetal brain tissue, 293T, A549 and A172 cell lysates IHC: 80-400 Positive control: Human liver cancer Predicted cell location: Cytoplasm
Reactivity:	Human
Host:	Rabbit
Isotype:	IgG
Clonality:	Polyclonal
Immunogen:	Fusion protein of human PPEF1
Formulation:	pH7.4 PBS, 0.05% NaN <sub>3</sub> , 40% Glycerol
Concentration:	lot specific
Purification:	Antigen affinity purification
Conjugation:	Unconjugated
Storage:	Store at -20°C.
Stability:	1 year
Predicted Protein Size:	76 kDa
Gene Name:	protein phosphatase with EF-hand domain 1
Database Link:	<a href="#">Entrez Gene 5475 Human</a> <a href="#">O14829</a>



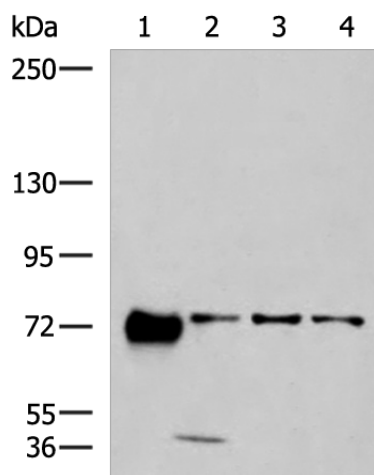
[View online »](#)

**Background:**

This gene encodes a member of the serine/threonine protein phosphatase with EF-hand motif family. The protein contains a protein phosphatase catalytic domain, and at least two EF-hand calcium-binding motifs in its C terminus. Although its substrate(s) is unknown, the encoded protein has been suggested to play a role in specific sensory neuron function and/or development. This gene shares high sequence similarity with the *Drosophila* retinal degeneration C (*rdgC*) gene. Several alternatively spliced transcript variants, each encoding a distinct isoform, have been described.

**Synonyms:**

OTTHUMP00000023006; PP7; PPEF; PPEF-1; PPP7C

**Product images:**

Gel: 6%SDS-PAGE

Lysate: 40  $\mu$ g

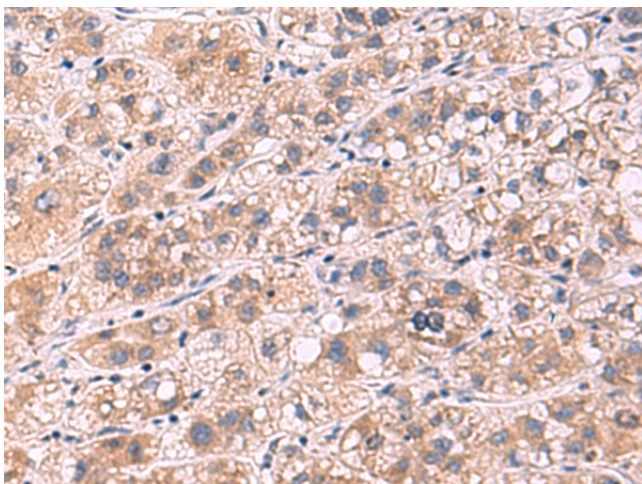
Lane 1-4: Human fetal brain tissue  
293T

A549 and A172 cell lysates

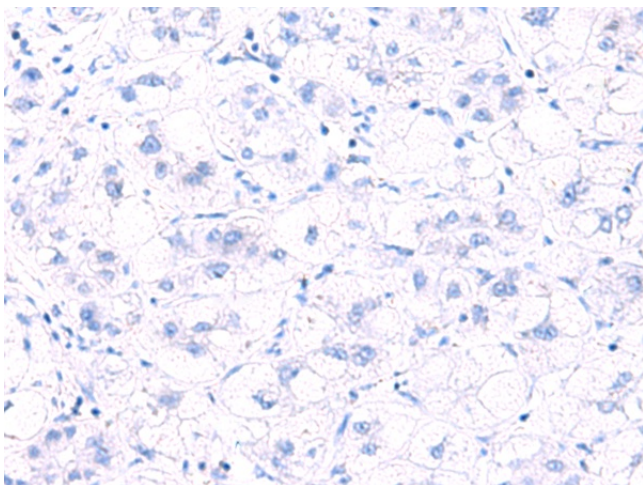
Primary antibody: TA366325 (PPEF1 Antibody) at  
dilution 1/1300

Secondary antibody: Goat anti rabbit IgG at  
1/5000 dilution

Exposure time: 1 minute



Immunohistochemistry of paraffin-embedded  
Human liver cancer tissue using TA366325 (PPEF1  
Antibody) at dilution 1/90 (Original magnification:  
 $\times$ 200)



Immunohistochemistry of paraffin-embedded Human liver cancer tissue using TA366325 (PPEF1 Antibody) at dilution 1/90, treated with fusion protein. (Original magnification: x200)