

## Product datasheet for **TA366321**

### SORBS2 Rabbit Polyclonal Antibody

#### Product data:

Product Type:	Primary Antibodies
Applications:	IHC, WB
Recommended Dilution:	WB: 1000-5000 WB positive control: 231, A549 and LO2 cell lysates IHC: 150-300 Positive control: Human liver cancer Predicted cell location: Cytoplasm
Reactivity:	Human, Mouse, Rat
Host:	Rabbit
Isotype:	IgG
Clonality:	Polyclonal
Immunogen:	Fusion protein of human SORBS2
Formulation:	pH7.4 PBS, 0.05% NaN <sub>3</sub> , 40% Glycerol
Concentration:	lot specific
Purification:	Antigen affinity purification
Conjugation:	Unconjugated
Storage:	Store at -20°C.
Stability:	1 year
Predicted Protein Size:	124 kDa
Gene Name:	sorbin and SH3 domain containing 2
Database Link:	<a href="#">Entrez Gene 8470 Human O94875</a>



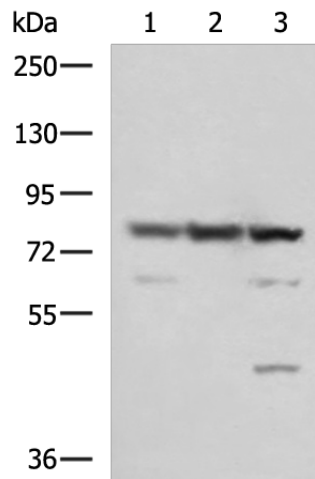
[View online »](#)

**Background:**

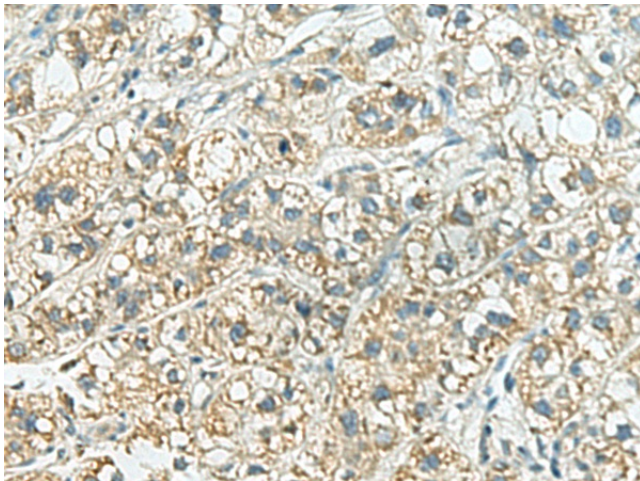
Arg and c-Abl represent the mammalian members of the Abelson family of non-receptor protein-tyrosine kinases. They interact with the Arg/Abl binding proteins via the SH3 domains present in the carboxy end of the latter group of proteins. This gene encodes the sorbin and SH3 domain containing 2 protein. It has three C-terminal SH3 domains and an N-terminal sorbin homology (SoHo) domain that interacts with lipid raft proteins. The subcellular localization of this protein in epithelial and cardiac muscle cells suggests that it functions as an adapter protein to assemble signaling complexes in stress fibers, and that it is a potential link between Abl family kinases and the actin cytoskeleton. Alternative splicing results in multiple transcript variants encoding different isoforms.

**Synonyms:**

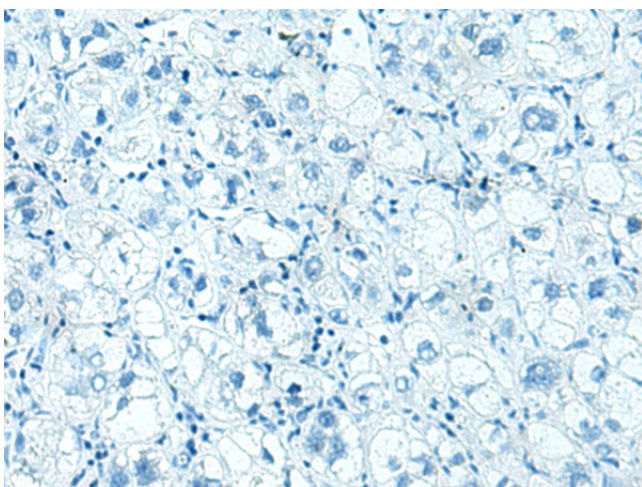
ARGBP2; FLJ93447; KIAA0777; OTTHUMP00000211726; PRO0618; Sorbin

**Product images:**

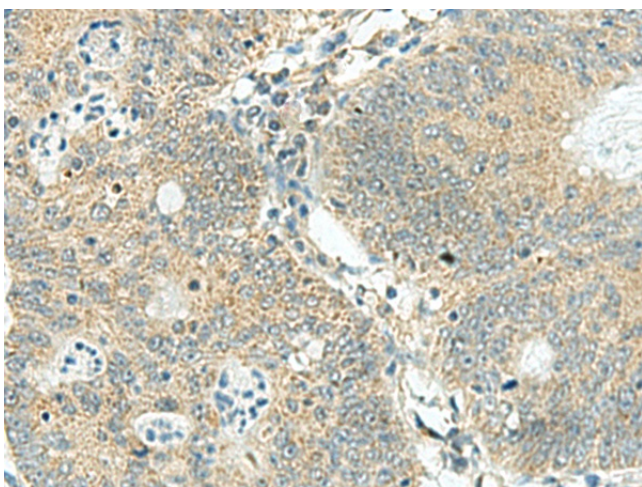
Gel: 6%SDS-PAGE  
Lysate: 40 µg  
Lane 1-3: 231  
A549 and LO2 cell lysates  
Primary antibody: TA366321 (SORBS2 Antibody)  
at dilution 1/1350  
Secondary antibody: Goat anti rabbit IgG at  
1/5000 dilution  
Exposure time: 5 seconds



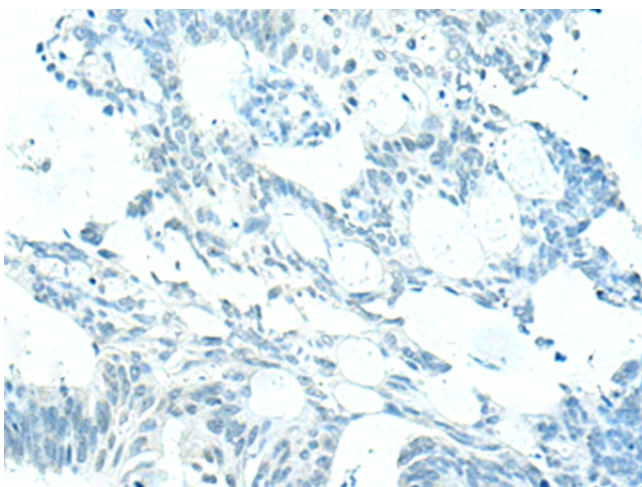
Immunohistochemistry of paraffin-embedded  
Human liver cancer tissue using TA366321  
(SORBS2 Antibody) at dilution 1/160 (Original  
magnification: ×200)



Immunohistochemistry of paraffin-embedded Human liver cancer tissue using TA366321 (SORBS2 Antibody) at dilution 1/160, treated with fusion protein. (Original magnification: ×200)



Immunohistochemistry of paraffin-embedded Human colorectal cancer tissue using TA366321 (SORBS2 Antibody) at dilution 1/160 (Original magnification: ×200)



Immunohistochemistry of paraffin-embedded Human colorectal cancer tissue using TA366321 (SORBS2 Antibody) at dilution 1/160, treated with fusion protein. (Original magnification: ×200)