

Product datasheet for **TA366318S**

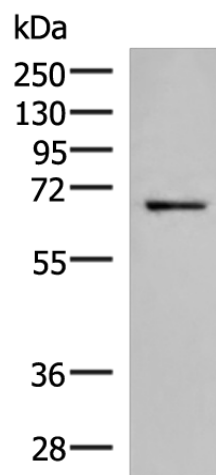
GSPT2 Rabbit Polyclonal Antibody

Product data:

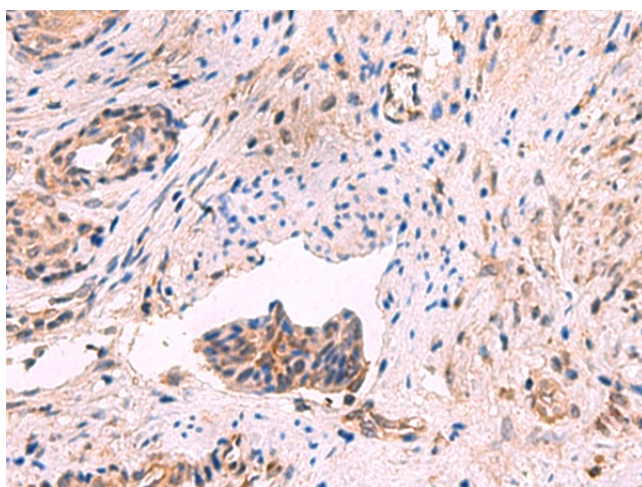
| | |
|-------------------------|---|
| Product Type: | Primary Antibodies |
| Applications: | IHC, WB |
| Recommended Dilution: | WB: 500-2000 WB positive control: 231 cell lysate IHC: 30-150 Positive control: Human cervical cancer Predicted cell location: Cytoplasm |
| Reactivity: | Human, Mouse |
| Host: | Rabbit |
| Isotype: | IgG |
| Clonality: | Polyclonal |
| Immunogen: | Fusion protein of human GSPT2 |
| Formulation: | pH7.4 PBS, 0.05% NaN ₃ , 40% Glycerol |
| Purification: | Antigen affinity purification |
| Conjugation: | Unconjugated |
| Storage: | Store at -20°C. |
| Stability: | 1 year |
| Predicted Protein Size: | 69 kDa |
| Gene Name: | G1 to S phase transition 2 |
| Database Link: | Entrez Gene 23708 Human Q8IYD1 |
| Background: | This gene encodes a GTPase that belongs to the GTP-binding elongation factor family. The encoded protein is a polypeptide release factor that complexes with eukaryotic peptide chain release factor 1 to mediate translation termination. This protein may also be involved in mRNA stability. |
| Synonyms: | ERF3B; FLJ10441; GST2 |



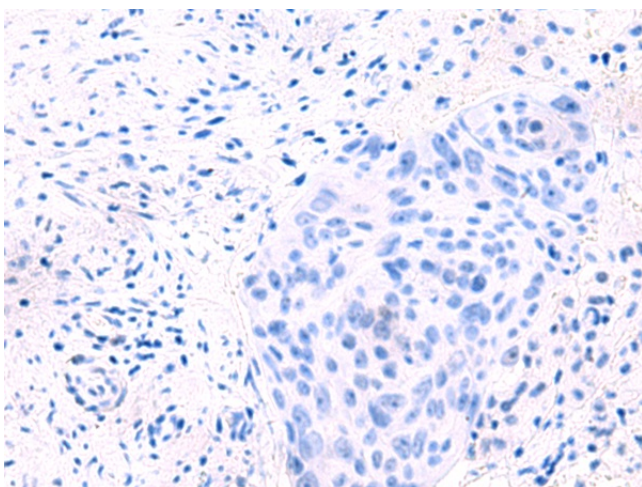
[View online »](#)

Product images:

Gel: 8%SDS-PAGE
Lysate: 40 μ g
Lane: 231 cell lysate
Primary antibody: [TA366318] (GSPT2 Antibody) at dilution 1/650
Secondary antibody: Goat anti rabbit IgG at 1/5000 dilution
Exposure time: 6 minutes



Immunohistochemistry of paraffin-embedded Human cervical cancer tissue using [TA366318] (GSPT2 Antibody) at dilution 1/50 (Original magnification: \times 200)



Immunohistochemistry of paraffin-embedded Human cervical cancer tissue using [TA366318] (GSPT2 Antibody) at dilution 1/50, treated with fusion protein. (Original magnification: ×200)