

## Product datasheet for **TA366307**

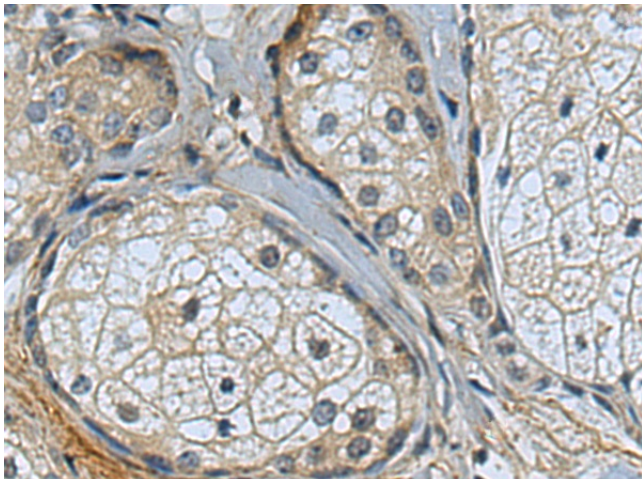
### VAC14 Rabbit Polyclonal Antibody

#### Product data:

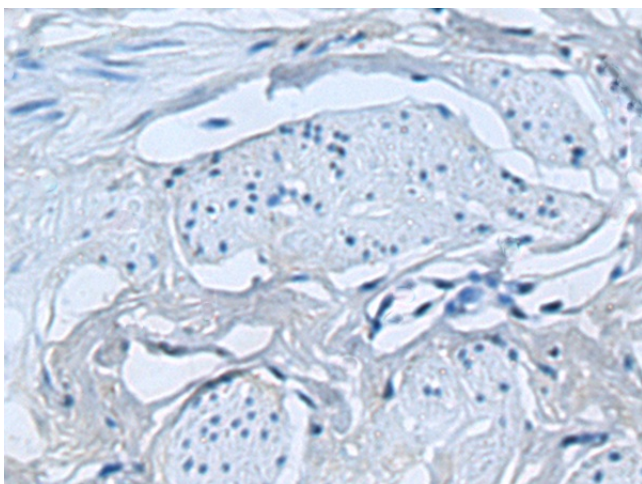
Product Type:	Primary Antibodies
Applications:	IHC
Recommended Dilution:	IHC: 100-200 Positive control: Human breast cancer Predicted cell location: Cytoplasm
Reactivity:	Human, Mouse, Rat
Host:	Rabbit
Isotype:	IgG
Clonality:	Polyclonal
Immunogen:	Fusion protein of human VAC14
Formulation:	pH7.4 PBS, 0.05% NaN <sub>3</sub> , 40% Glycerol
Concentration:	lot specific
Purification:	Antigen affinity purification
Conjugation:	Unconjugated
Storage:	Store at -20°C.
Stability:	1 year
Gene Name:	Vac14, PIKFYVE complex component
Database Link:	<a href="#">Entrez Gene 55697 Human Q08AM6</a>
Background:	This gene encodes a scaffold protein that is a component of the PIKfyve protein kinase complex. This complex is responsible for the synthesis of phosphatidylinositol 3,5-bisphosphate, an important component of cellular membranes, from phosphatidylinositol 3-phosphate. Mice lacking a functional copy of this gene exhibit severe neurodegeneration. Mutations in the human gene have been identified in patients with a childhood onset progressive neurological disorder characterized by impaired movement, dystonia, and striatal abnormalities.
Synonyms:	ArPIKfyve; FLJ10305; FLJ36622; FLJ46582; MGC149815; MGC149816; TAX1BP2; TRX



[View online »](#)

**Product images:**

Immunohistochemistry of paraffin-embedded Human breast cancer tissue using TA366307 (VAC14 Antibody) at dilution 1/140 (Original magnification:  $\times 200$ )



Immunohistochemistry of paraffin-embedded Human breast cancer tissue using TA366307 (VAC14 Antibody) at dilution 1/140, treated with fusion protein. (Original magnification:  $\times 200$ )