

Product datasheet for **TA366299**

PEPD Rabbit Polyclonal Antibody

Product data:

Product Type:	Primary Antibodies
Applications:	IHC, WB
Recommended Dilution:	WB: 1000-5000 WB positive control: HepG2 cell, Mouse small intestines tissue lysates IHC: 50-300 Positive control: Human liver cancer Predicted cell location: Cytoplasm
Reactivity:	Human, Mouse, Rat
Host:	Rabbit
Isotype:	IgG
Clonality:	Polyclonal
Immunogen:	Fusion protein of human PEPD
Formulation:	pH7.4 PBS, 0.05% NaN ₃ , 40% Glycerol
Concentration:	lot specific
Purification:	Antigen affinity purification
Conjugation:	Unconjugated
Storage:	Store at -20°C.
Stability:	1 year
Predicted Protein Size:	55 kDa
Gene Name:	peptidase D
Database Link:	Entrez Gene 5184 Human P12955

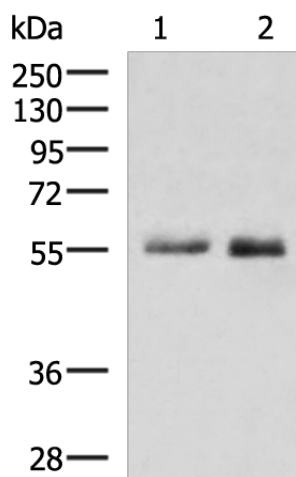
Background: This gene encodes a member of the peptidase family. The protein forms a homodimer that hydrolyzes dipeptides or tripeptides with C-terminal proline or hydroxyproline residues. The enzyme serves an important role in the recycling of proline, and may be rate limiting for the production of collagen. Mutations in this gene result in prolidase deficiency, which is characterized by the excretion of large amount of di- and tri-peptides containing proline. Multiple transcript variants encoding different isoforms have been found for this gene.



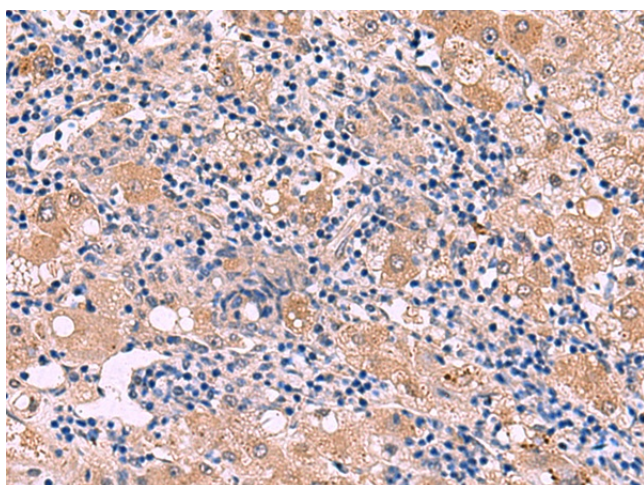
[View online »](#)

Synonyms: imidodipeptidase; MGC10905; PRD; prolidase

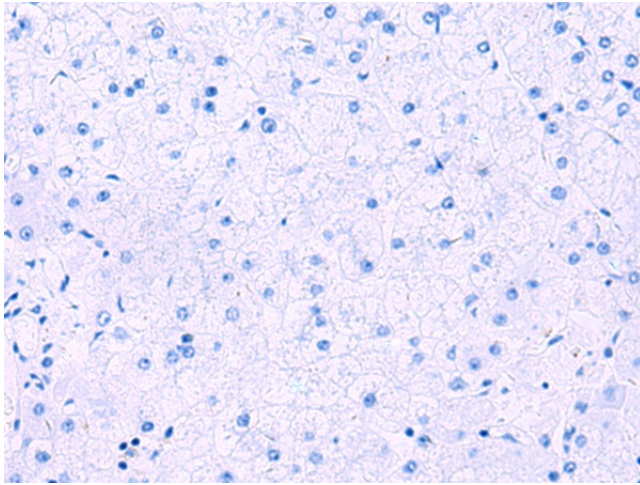
Product images:



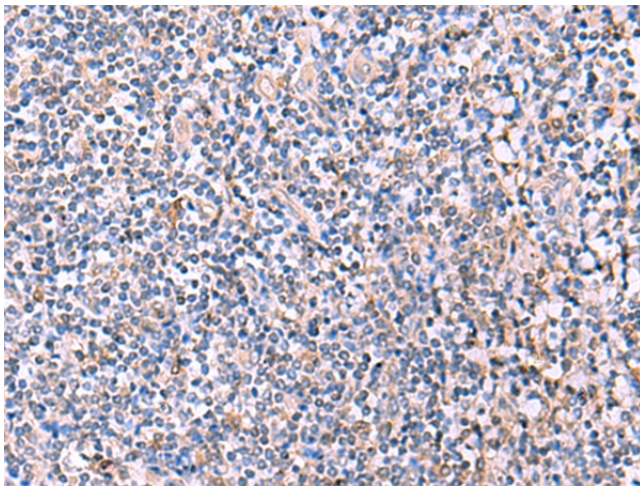
Gel: 8%SDS-PAGE
Lysate: 40 μ g
Lane 1-2: HepG2 cell
Mouse small intestines tissue lysates
Primary antibody: TA366299 (PEPD Antibody) at dilution 1/1000
Secondary antibody: Goat anti rabbit IgG at 1/5000 dilution
Exposure time: 2 minutes



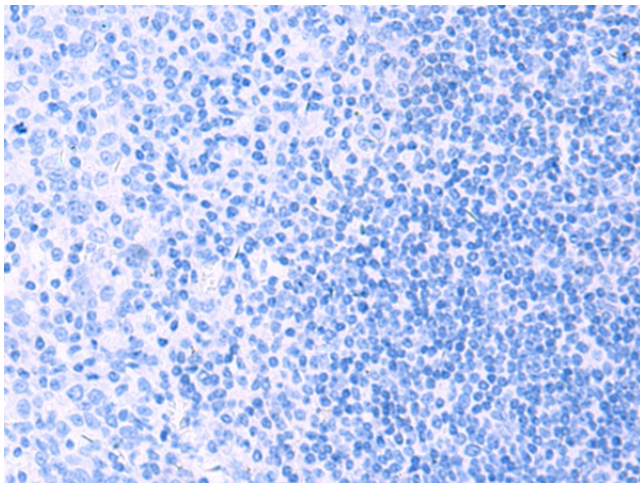
Immunohistochemistry of paraffin-embedded Human liver cancer tissue using TA366299 (PEPD Antibody) at dilution 1/85 (Original magnification: \times 200)



Immunohistochemistry of paraffin-embedded Human liver cancer tissue using TA366299 (PEPD Antibody) at dilution 1/85, treated with fusion protein. (Original magnification: x200)



Immunohistochemistry of paraffin-embedded Human tonsil tissue using TA366299 (PEPD Antibody) at dilution 1/85 (Original magnification: x200)



Immunohistochemistry of paraffin-embedded Human tonsil tissue using TA366299 (PEPD Antibody) at dilution 1/85, treated with fusion protein. (Original magnification: x200)