

## Product datasheet for **TA366268S**

### COPS3 Rabbit Polyclonal Antibody

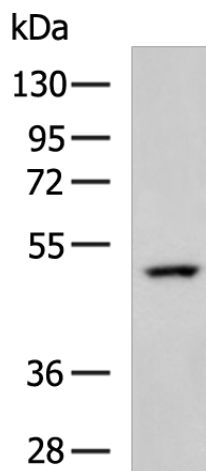
#### Product data:

Product Type:	Primary Antibodies
Applications:	IHC, WB
Recommended Dilution:	WB: 200-1000 WB positive control: NIH/3T3 cell lysate IHC: 50-300 Positive control: Human lung cancer Predicted cell location: Cytoplasm and Nucleus
Reactivity:	Human, Mouse, Rat
Host:	Rabbit
Isotype:	IgG
Clonality:	Polyclonal
Immunogen:	Fusion protein of human COPS3
Formulation:	pH7.4 PBS, 0.05% NaN <sub>3</sub> , 40% Glycerol
Purification:	Antigen affinity purification
Conjugation:	Unconjugated
Storage:	Store at -20°C.
Stability:	1 year
Predicted Protein Size:	48 kDa
Gene Name:	COP9 signalosome subunit 3
Database Link:	<a href="#">Entrez Gene 8533 Human Q9UNS2</a>
Background:	The protein encoded by this gene possesses kinase activity that phosphorylates regulators involved in signal transduction. It phosphorylates I kappa-Balpa, p105, and c-Jun. It acts as a docking site for complex-mediated phosphorylation. The gene is located within the Smith-Magenis syndrome region on chromosome 17. Several transcript variants encoding different isoforms have been found for this gene.
Synonyms:	CSN3; SGN3



[View online »](#)

## Product images:



Gel: 8%SDS-PAGE  
Lysate: 40  $\mu$ g  
Lane: NIH/3T3 cell lysate  
Primary antibody: [TA366268] (COPS3 Antibody) at dilution 1/350  
Secondary antibody: Goat anti rabbit IgG at 1/5000 dilution  
Exposure time: 5 seconds

