

## Product datasheet for **TA366262**

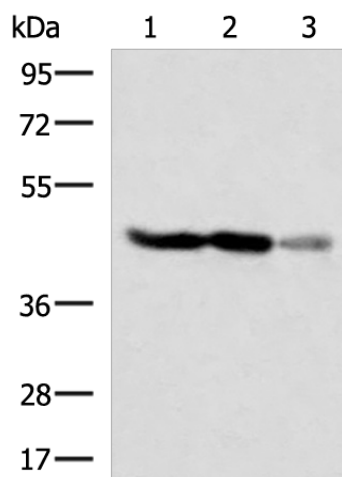
### FDFT1 Rabbit Polyclonal Antibody

#### Product data:

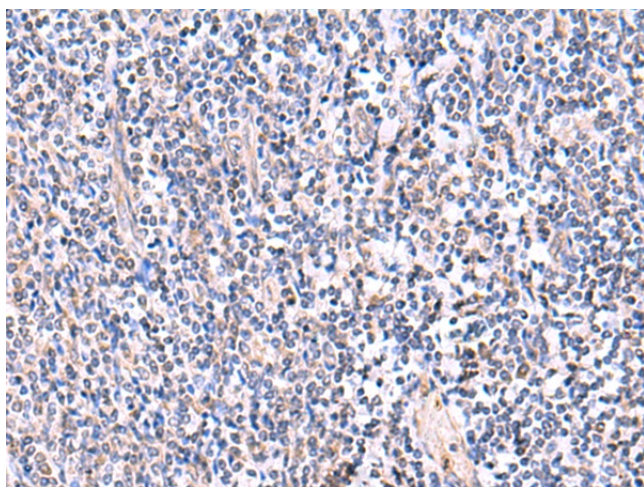
Product Type:	Primary Antibodies
Applications:	IHC, WB
Recommended Dilution:	WB: 1000-5000 WB positive control: HT29 and HepG2 cell, Human fetal brain tissue lysates IHC: 40-200 Positive control: Human tonsil Predicted cell location: Cytoplasm
Reactivity:	Human, Mouse, Rat
Host:	Rabbit
Isotype:	IgG
Clonality:	Polyclonal
Immunogen:	Fusion protein of human FDFT1
Formulation:	pH7.4 PBS, 0.05% NaN <sub>3</sub> , 40% Glycerol
Concentration:	lot specific
Purification:	Antigen affinity purification
Conjugation:	Unconjugated
Storage:	Store at -20°C.
Stability:	1 year
Predicted Protein Size:	48 kDa
Gene Name:	farnesyl-diphosphate farnesyltransferase 1
Database Link:	<a href="#">Entrez Gene 2222 Human P37268</a>
Background:	This gene encodes a membrane-associated enzyme located at a branch point in the mevalonate pathway. The encoded protein is the first specific enzyme in cholesterol biosynthesis, catalyzing the dimerization of two molecules of farnesyl diphosphate in a two-step reaction to form squalene.
Synonyms:	DGPT; ERG9; SQS; SS



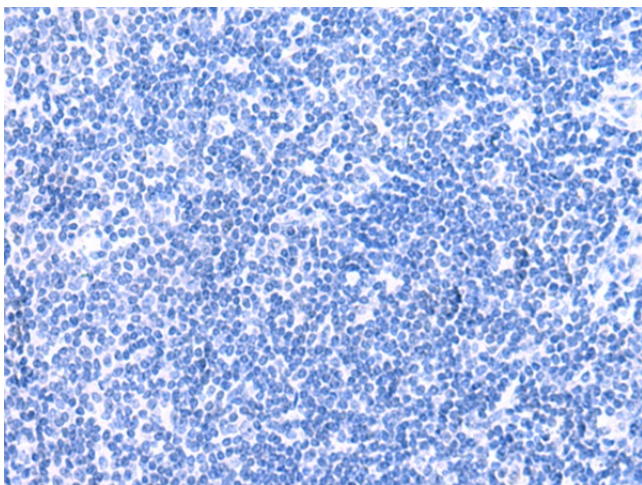
[View online »](#)

**Product images:**

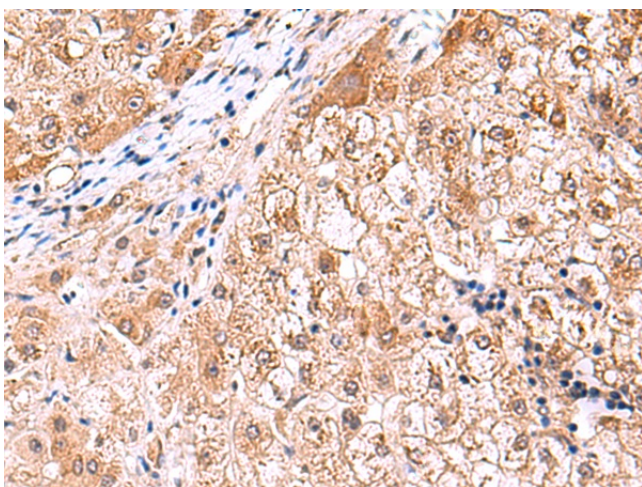
Gel: 8%SDS-PAGE  
Lysate: 40  $\mu$ g  
Lane 1-3: HT29 and HepG2 cell  
Human fetal brain tissue lysates  
Primary antibody: TA366262 (FDFT1 Antibody) at  
dilution 1/1000  
Secondary antibody: Goat anti rabbit IgG at  
1/5000 dilution  
Exposure time: 10 seconds



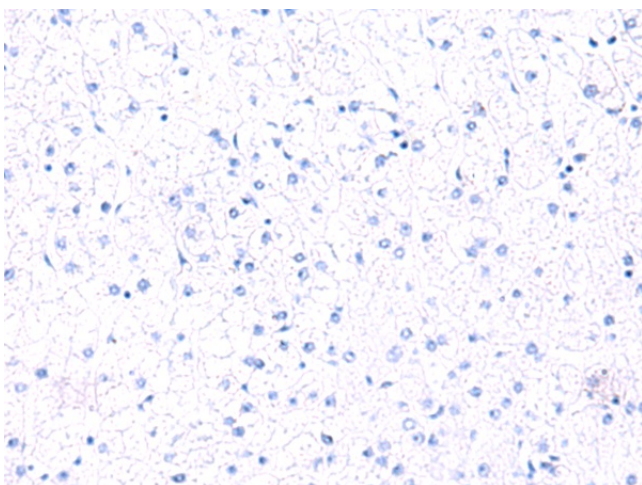
Immunohistochemistry of paraffin-embedded  
Human tonsil tissue using TA366262 (FDFT1  
Antibody) at dilution 1/75 (Original magnification:  
 $\times$ 200)



Immunohistochemistry of paraffin-embedded Human tonsil tissue using TA366262 (FDFT1 Antibody) at dilution 1/75, treated with fusion protein. (Original magnification:  $\times 200$ )



Immunohistochemistry of paraffin-embedded Human liver cancer tissue using TA366262 (FDFT1 Antibody) at dilution 1/75 (Original magnification:  $\times 200$ )



Immunohistochemistry of paraffin-embedded Human liver cancer tissue using TA366262 (FDFT1 Antibody) at dilution 1/75, treated with fusion protein. (Original magnification:  $\times 200$ )