

Product datasheet for **TA366261S**

RHAG Rabbit Polyclonal Antibody

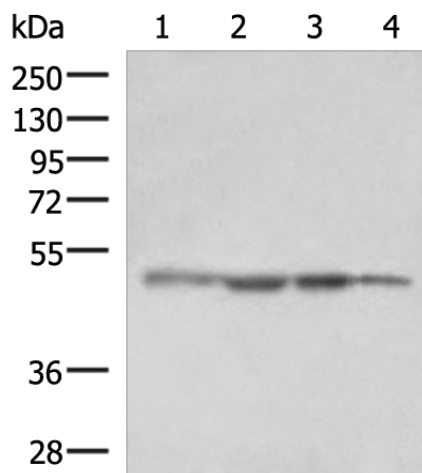
Product data:

Product Type:	Primary Antibodies
Applications:	IHC, WB
Recommended Dilution:	WB: 1000-5000 WB positive control: HepG2 cell, Human fetal liver tissue, K562 cell, NIH/3T3 cell lysates IHC: 50-300 Positive control: Human tonsil Predicted cell location: Cell membrane
Reactivity:	Human, Mouse
Host:	Rabbit
Isotype:	IgG
Clonality:	Polyclonal
Immunogen:	Fusion protein of human RHAG
Formulation:	pH7.4 PBS, 0.05% NaN ₃ , 40% Glycerol
Purification:	Antigen affinity purification
Conjugation:	Unconjugated
Storage:	Store at -20°C.
Stability:	1 year
Predicted Protein Size:	44 kDa
Gene Name:	Rh-associated glycoprotein
Database Link:	Entrez Gene 6005 Human Q02094
Background:	The protein encoded by this gene is erythrocyte-specific and is thought to be part of a membrane channel that transports ammonium and carbon dioxide across the blood cell membrane. The encoded protein appears to interact with Rh blood group antigens and Rh30 polypeptides. Defects in this gene are a cause of regulator type Rh-null hemolytic anemia (RHN), or Rh-deficiency syndrome.
Synonyms:	CD241; RH2; Rh50; Rh50A; Rh50GP; SLC42A1

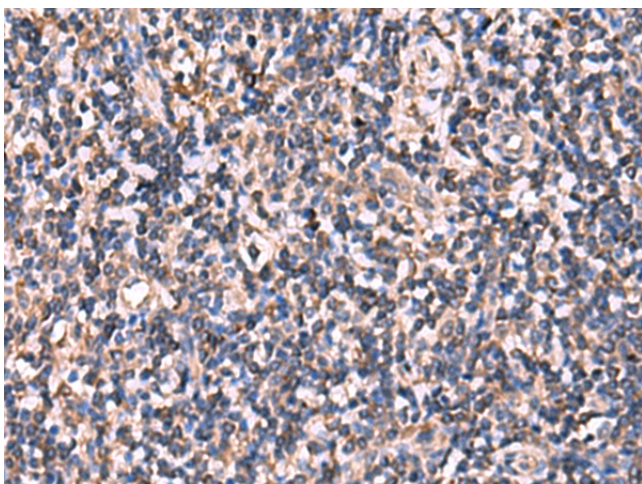


[View online »](#)

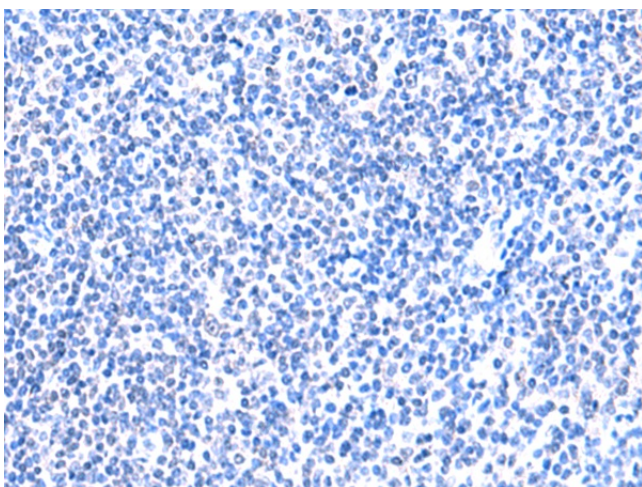
Product images:



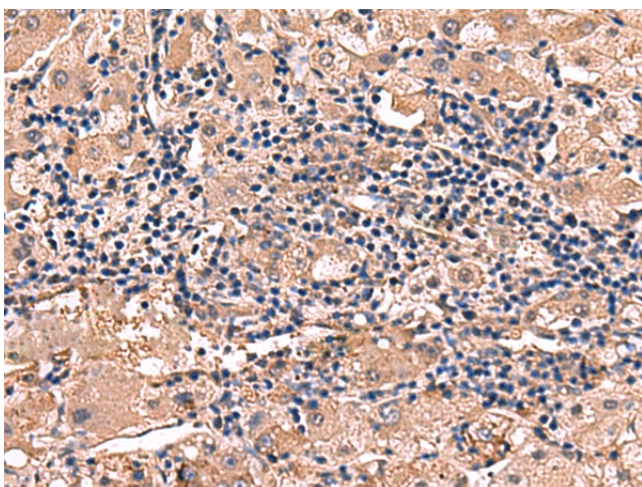
Gel: 8%SDS-PAGE
Lysate: 40 μ g
Lane 1-4: HepG2 cell
Human fetal liver tissue
K562 cell
NIH/3T3 cell lysates
Primary antibody: [TA366261] (RHAG Antibody) at dilution 1/1600
Secondary antibody: Goat anti rabbit IgG at 1/5000 dilution
Exposure time: 30 seconds



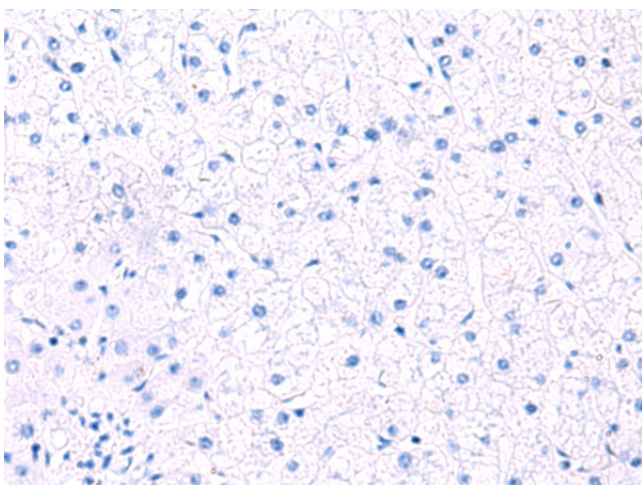
Immunohistochemistry of paraffin-embedded Human tonsil tissue using [TA366261] (RHAG Antibody) at dilution 1/110 (Original magnification: \times 200)



Immunohistochemistry of paraffin-embedded Human tonsil tissue using [TA366261] (RHAG Antibody) at dilution 1/110, treated with fusion protein. (Original magnification: $\times 200$)



Immunohistochemistry of paraffin-embedded Human liver cancer tissue using [TA366261] (RHAG Antibody) at dilution 1/110 (Original magnification: $\times 200$)



Immunohistochemistry of paraffin-embedded Human liver cancer tissue using [TA366261] (RHAG Antibody) at dilution 1/110, treated with fusion protein. (Original magnification: $\times 200$)