

## Product datasheet for **TA366258**

### SF3B3 Rabbit Polyclonal Antibody

#### Product data:

Product Type:	Primary Antibodies
Applications:	IHC
Recommended Dilution:	IHC: 50-300 Positive control: Human esophagus cancer Predicted cell location: Nucleus
Reactivity:	Human, Mouse
Host:	Rabbit
Isotype:	IgG
Clonality:	Polyclonal
Immunogen:	Fusion protein of human SF3B3
Formulation:	pH7.4 PBS, 0.05% NaN <sub>3</sub> , 40% Glycerol
Concentration:	lot specific
Purification:	Antigen affinity purification
Conjugation:	Unconjugated
Storage:	Store at -20°C.
Stability:	1 year
Gene Name:	splicing factor 3b subunit 3
Database Link:	<a href="#">Entrez Gene 23450 Human Q15393</a>

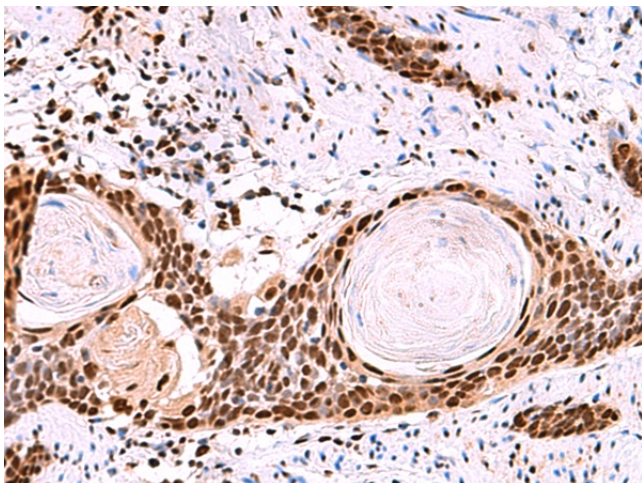
**Background:** This gene encodes subunit 3 of the splicing factor 3b protein complex. Splicing factor 3b, together with splicing factor 3a and a 12S RNA unit, forms the U2 small nuclear ribonucleoproteins complex (U2 snRNP). The splicing factor 3b/3a complex binds pre-mRNA upstream of the intron's branch site in a sequence independent manner and may anchor the U2 snRNP to the pre-mRNA. Splicing factor 3b is also a component of the minor U12-type spliceosome. Subunit 3 has also been identified as a component of the STAGA (SPT3-TAF(II)31-GCN5L acetylase) transcription coactivator-HAT (histone acetyltransferase) complex, and the TFTC (TATA-binding-protein-free TAF(II)-containing complex). These complexes may function in chromatin modification, transcription, splicing, and DNA repair.



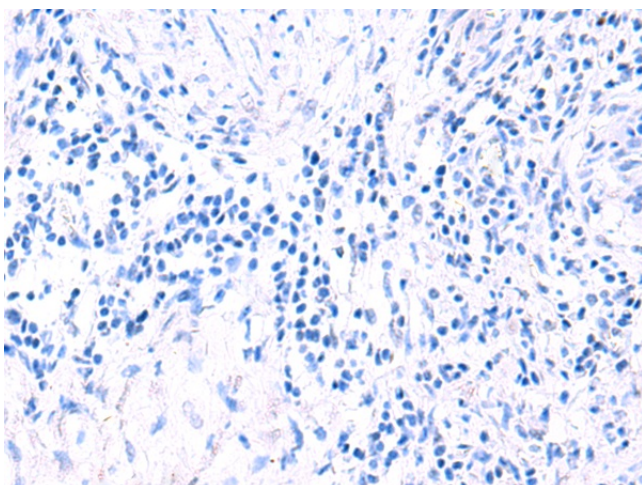
[View online »](#)

Synonyms: KIAA0017; RSE1; SAP130; SF3b130; STAF130

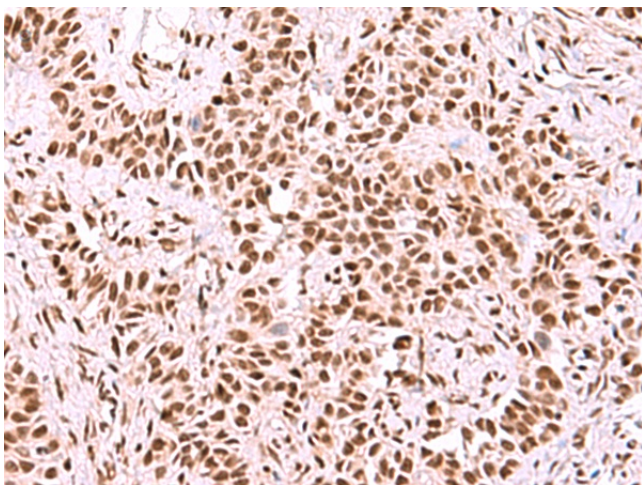
### Product images:



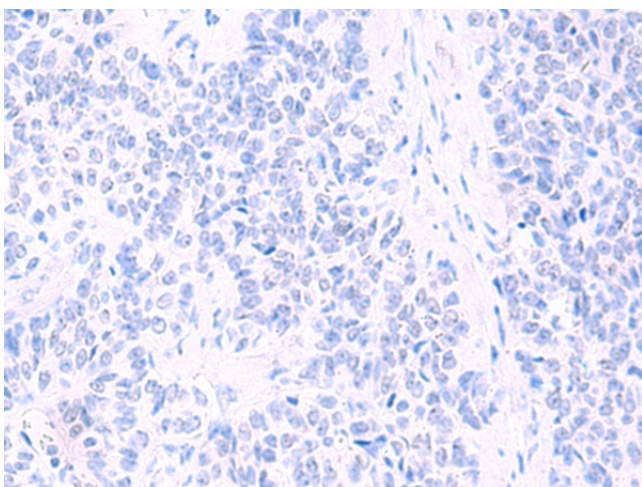
Immunohistochemistry of paraffin-embedded Human esophagus cancer tissue using TA366258 (SF3B3 Antibody) at dilution 1/50 (Original magnification: x200)



Immunohistochemistry of paraffin-embedded Human esophagus cancer tissue using TA366258 (SF3B3 Antibody) at dilution 1/50, treated with fusion protein. (Original magnification: x200)



Immunohistochemistry of paraffin-embedded Human ovarian cancer tissue using TA366258 (SF3B3 Antibody) at dilution 1/50 (Original magnification:  $\times 200$ )



Immunohistochemistry of paraffin-embedded Human ovarian cancer tissue using TA366258 (SF3B3 Antibody) at dilution 1/50, treated with fusion protein. (Original magnification:  $\times 200$ )