

Product datasheet for **TA366255S**

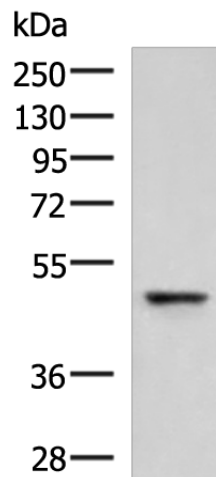
FAM82A1 (RMDN2) Rabbit Polyclonal Antibody

Product data:

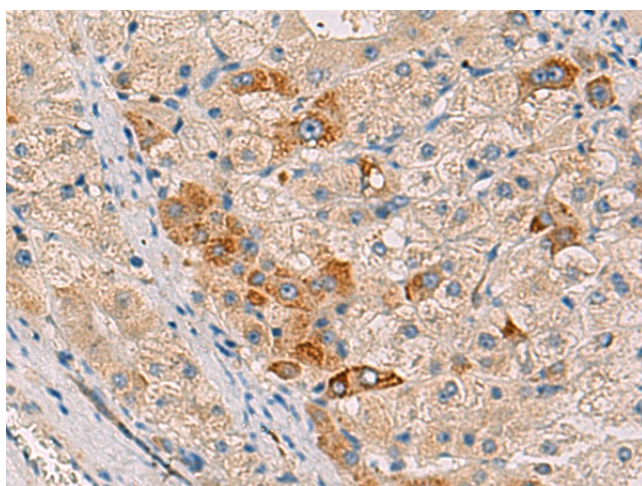
Product Type:	Primary Antibodies
Applications:	IHC, WB
Recommended Dilution:	WB: 500-2000 WB positive control: Human fetal liver tissue lysate IHC: 30-150 Positive control: Human liver cancer Predicted cell location: Cytoplasm
Reactivity:	Human, Mouse, Rat
Host:	Rabbit
Isotype:	IgG
Clonality:	Polyclonal
Immunogen:	Fusion protein of human RMDN2
Formulation:	pH7.4 PBS, 0.05% NaN ₃ , 40% Glycerol
Purification:	Antigen affinity purification
Conjugation:	Unconjugated
Storage:	Store at -20°C.
Stability:	1 year
Predicted Protein Size:	47 kDa
Gene Name:	regulator of microtubule dynamics 2
Database Link:	Entrez Gene 151393 Human Q96LZ7
Background:	The human protein FAM82A1, also known as regulator of microtubule dynamics 2 (RMD2), was one of three proteins identified as related to a family of microtubule-associated proteins in <i>C. elegans</i> . FAM82A1 contains multiple coiled-coil domains and localizes to the spindle microtubules and spindle poles during cell division. During interphase, RMD2 localizes to the cytoplasm with protein observed in the microtubule lattice and perinuclear region.
Synonyms:	AW061290; Fam82a; Fam82a1; mRMD-2; RMD-2



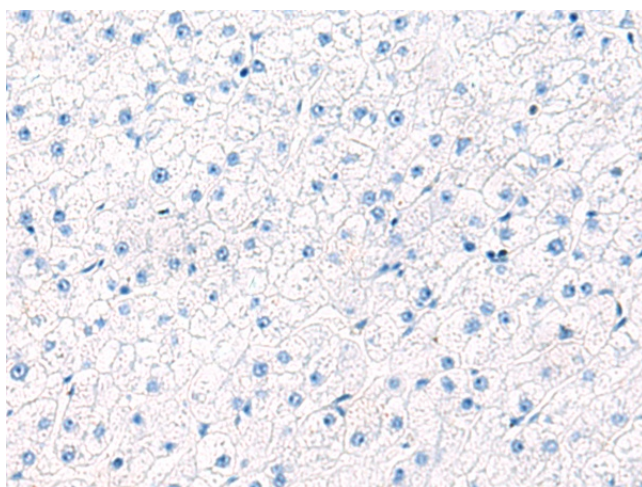
[View online »](#)

Product images:


Gel: 8%SDS-PAGE
 Lysate: 40 μ g
 Lane: Human fetal liver tissue lysate
 Primary antibody: [TA366255] (RMDN2 Antibody)
 at dilution 1/750
 Secondary antibody: Goat anti rabbit IgG at
 1/5000 dilution
 Exposure time: 2 minutes



Immunohistochemistry of paraffin-embedded
 Human liver cancer tissue using [TA366255]
 (RMDN2 Antibody) at dilution 1/50 (Original
 magnification: \times 200)



Immunohistochemistry of paraffin-embedded
 Human liver cancer tissue using [TA366255]
 (RMDN2 Antibody) at dilution 1/50, treated with
 fusion protein. (Original magnification: \times 200)