

## Product datasheet for **TA366247**

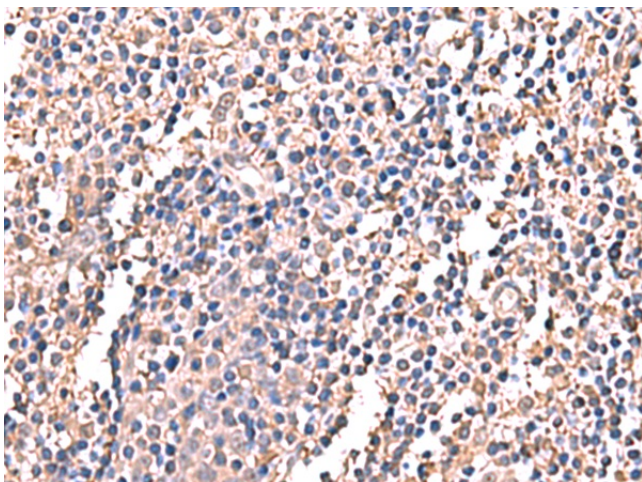
### LDHAL6B Rabbit Polyclonal Antibody

#### Product data:

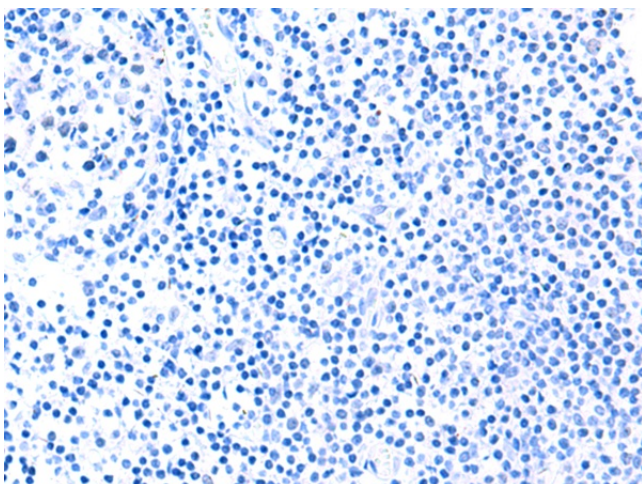
Product Type:	Primary Antibodies
Applications:	IHC
Recommended Dilution:	IHC: 50-300 Positive control: Human tonsil Predicted cell location: Cytoplasm
Reactivity:	Human
Host:	Rabbit
Isotype:	IgG
Clonality:	Polyclonal
Immunogen:	Fusion protein of human LDHAL6B
Formulation:	pH7.4 PBS, 0.05% NaN <sub>3</sub> , 40% Glycerol
Concentration:	lot specific
Purification:	Antigen affinity purification
Conjugation:	Unconjugated
Storage:	Store at -20°C.
Stability:	1 year
Gene Name:	lactate dehydrogenase A like 6B
Database Link:	<a href="#">Entrez Gene 92483 Human Q9BYZ2</a>
Background:	LDHAL6B belongs to the LDH/MDH superfamily. LDH family. The specific function of the protein remains unknown.
Synonyms:	LDH6B; LDHAL6; LDHL



[View online »](#)

**Product images:**

Immunohistochemistry of paraffin-embedded Human tonsil tissue using TA366247 (LDHAL6B Antibody) at dilution 1/60 (Original magnification: ×200)



Immunohistochemistry of paraffin-embedded Human tonsil tissue using TA366247 (LDHAL6B Antibody) at dilution 1/60, treated with fusion protein. (Original magnification: ×200)