

## Product datasheet for **TA366245S**

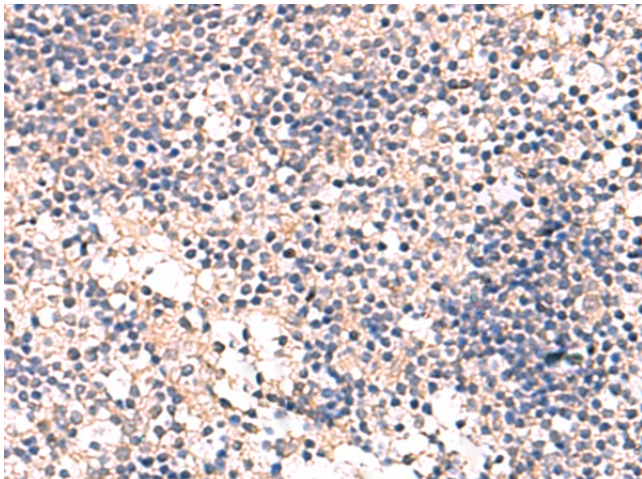
### MKS1 Rabbit Polyclonal Antibody

#### Product data:

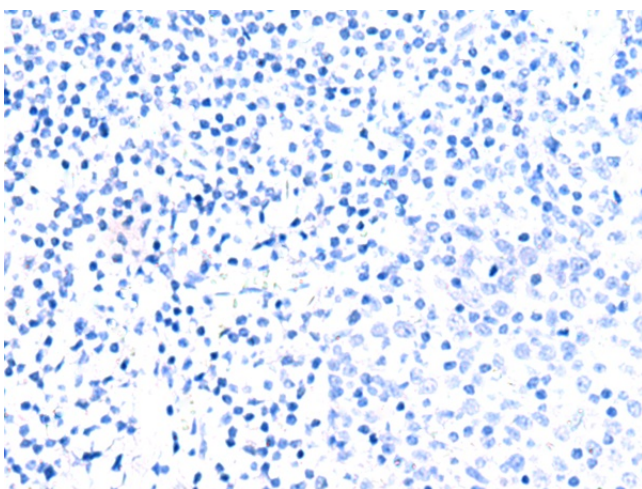
Product Type:	Primary Antibodies
Applications:	IHC
Recommended Dilution:	IHC: 50-300 Positive control: Human tonsil Predicted cell location: Cytoplasm
Reactivity:	Human, Mouse, Rat
Host:	Rabbit
Isotype:	IgG
Clonality:	Polyclonal
Immunogen:	Fusion protein of human MKS1
Formulation:	pH7.4 PBS, 0.05% NaN <sub>3</sub> , 40% Glycerol
Purification:	Antigen affinity purification
Conjugation:	Unconjugated
Storage:	Store at -20°C.
Stability:	1 year
Gene Name:	Meckel syndrome, type 1
Database Link:	<a href="#">Entrez Gene 54903 Human Q9NXB0</a>
Background:	The protein encoded by this gene localizes to the basal body and is required for formation of the primary cilium in ciliated epithelial cells. Mutations in this gene result in Meckel syndrome type 1 and in Bardet-Biedl syndrome type 13. Multiple transcript variants encoding different isoforms have been found for this gene.
Synonyms:	BBS13; FLJ20345; MES; MKS



[View online »](#)

**Product images:**

Immunohistochemistry of paraffin-embedded Human tonsil tissue using [TA366245] (MKS1 Antibody) at dilution 1/50 (Original magnification: ×200)



Immunohistochemistry of paraffin-embedded Human tonsil tissue using [TA366245] (MKS1 Antibody) at dilution 1/50, treated with fusion protein. (Original magnification: ×200)