

## Product datasheet for **TA366240**

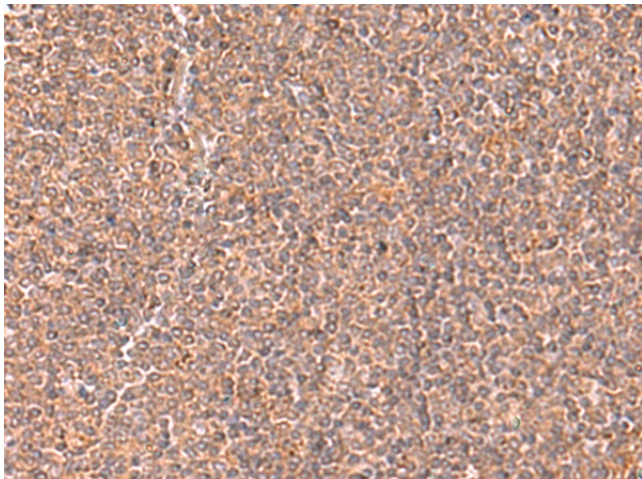
### **p40 (RABEPK) Rabbit Polyclonal Antibody**

#### **Product data:**

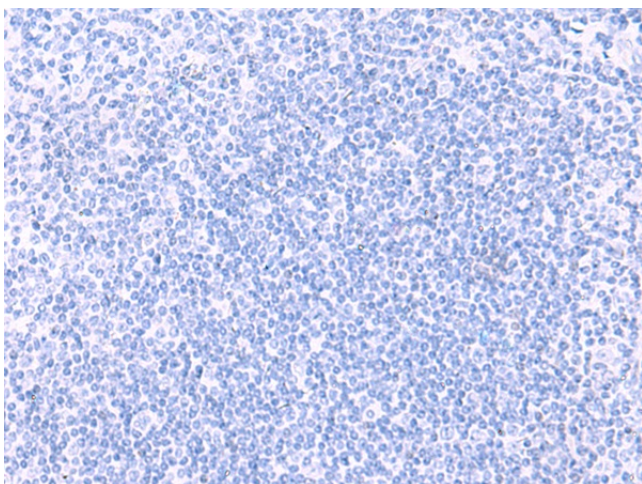
<b>Product Type:</b>	Primary Antibodies
<b>Applications:</b>	IHC
<b>Recommended Dilution:</b>	IHC: 50-300 Positive control: Human tonsil Predicted cell location: Cytoplasm
<b>Reactivity:</b>	Human
<b>Host:</b>	Rabbit
<b>Isotype:</b>	IgG
<b>Clonality:</b>	Polyclonal
<b>Immunogen:</b>	Fusion protein of human RABEPK
<b>Formulation:</b>	pH7.4 PBS, 0.05% NaN <sub>3</sub> , 40% Glycerol
<b>Concentration:</b>	lot specific
<b>Purification:</b>	Antigen affinity purification
<b>Conjugation:</b>	Unconjugated
<b>Storage:</b>	Store at -20°C.
<b>Stability:</b>	1 year
<b>Gene Name:</b>	Rab9 effector protein with kelch motifs
<b>Database Link:</b>	<a href="#">Entrez Gene 10244 Human Q7Z6M1</a>
<b>Background:</b>	Rab9 effector required for endosome to trans-Golgi network (TGN) transport.
<b>Synonyms:</b>	bA65N13.1; DKFZp686P1077; p40; RAB9P40



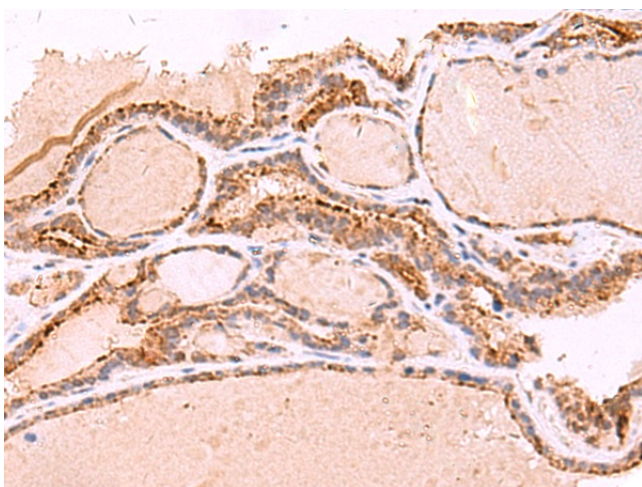
[View online »](#)

**Product images:**

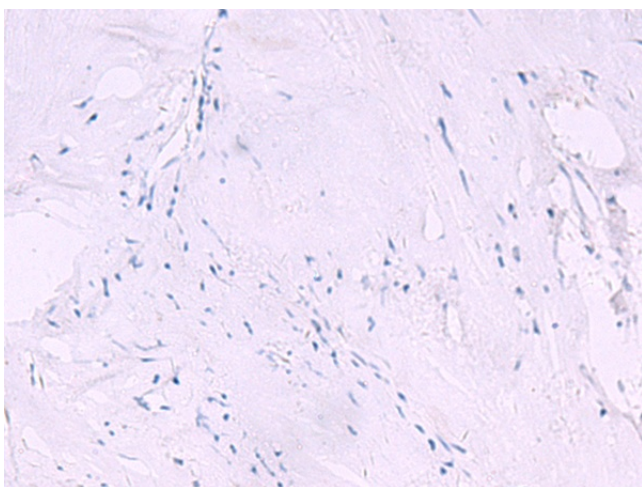
Immunohistochemistry of paraffin-embedded Human tonsil tissue using TA366240 (RABEPK Antibody) at dilution 1/65 (Original magnification: ×200)



Immunohistochemistry of paraffin-embedded Human tonsil tissue using TA366240 (RABEPK Antibody) at dilution 1/65, treated with fusion protein. (Original magnification: ×200)



Immunohistochemistry of paraffin-embedded Human thyroid cancer tissue using TA366240 (RABEPK Antibody) at dilution 1/65 (Original magnification:  $\times 200$ )



Immunohistochemistry of paraffin-embedded Human thyroid cancer tissue using TA366240 (RABEPK Antibody) at dilution 1/65, treated with fusion protein. (Original magnification:  $\times 200$ )