

## Product datasheet for **TA366234S**

### ELAC1 Rabbit Polyclonal Antibody

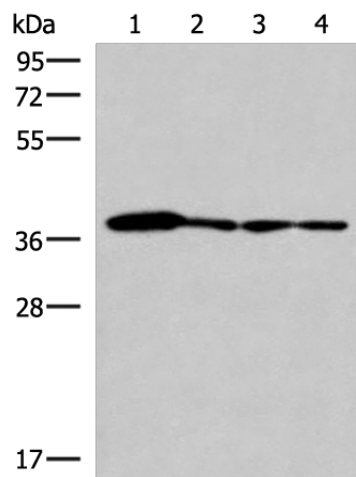
#### Product data:

<b>Product Type:</b>	Primary Antibodies
<b>Applications:</b>	IHC, WB
<b>Recommended Dilution:</b>	WB: 1000–5000 WB positive control: 293T, PC3, A549 and HepG2 cell lysates IHC: 50–300 Positive control: Human ovarian cancer Predicted cell location: Nucleus
<b>Reactivity:</b>	Human, Mouse
<b>Host:</b>	Rabbit
<b>Isotype:</b>	IgG
<b>Clonality:</b>	Polyclonal
<b>Immunogen:</b>	Fusion protein of human ELAC1
<b>Formulation:</b>	pH7.4 PBS, 0.05% NaN <sub>3</sub> , 40% Glycerol
<b>Purification:</b>	Antigen affinity purification
<b>Conjugation:</b>	Unconjugated
<b>Storage:</b>	Store at –20°C.
<b>Stability:</b>	1 year
<b>Predicted Protein Size:</b>	40 kDa
<b>Gene Name:</b>	elaC ribonuclease Z 1
<b>Database Link:</b>	<a href="#">Entrez Gene 55520 Human</a> <a href="#">Q9H777</a>
<b>Background:</b>	Zinc phosphodiesterase, which displays some tRNA 3'-processing endonuclease activity. Probably involved in tRNA maturation, by removing a 3'-trailer from precursor tRNA.



Synonyms: D29

### Product images:



Gel: 8%SDS-PAGE

Lysate: 40 µg

Lane 1-4: 293T

PC3

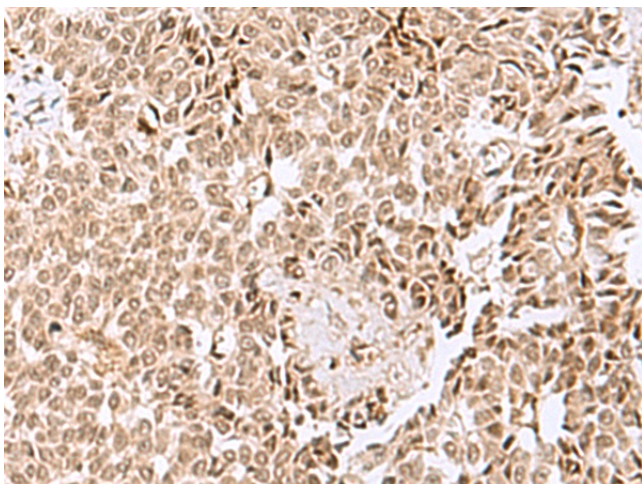
A549 and HepG2 cell lysates

Primary antibody: [TA366234] (ELAC1

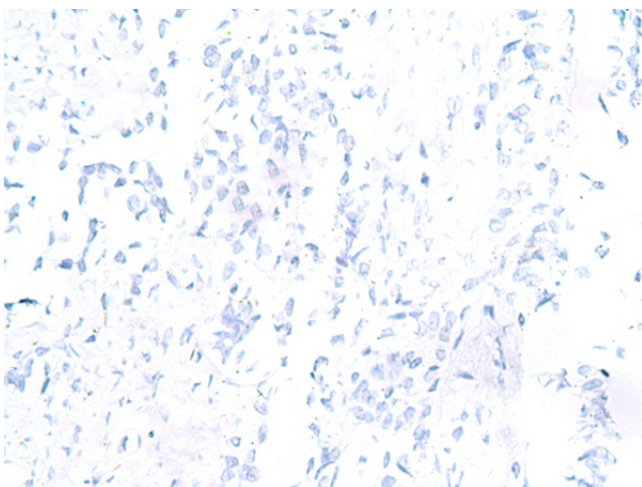
Antibody) at dilution 1/800

Secondary antibody: Goat anti rabbit IgG at 1/5000 dilution

Exposure time: 5 seconds



Immunohistochemistry of paraffin-embedded Human ovarian cancer tissue using [TA366234] (ELAC1 Antibody) at dilution 1/50 (Original magnification: ×200)



Immunohistochemistry of paraffin-embedded Human ovarian cancer tissue using [TA366234] (ELAC1 Antibody) at dilution 1/50, treated with fusion protein. (Original magnification: ×200)