

## Product datasheet for **TA366222**

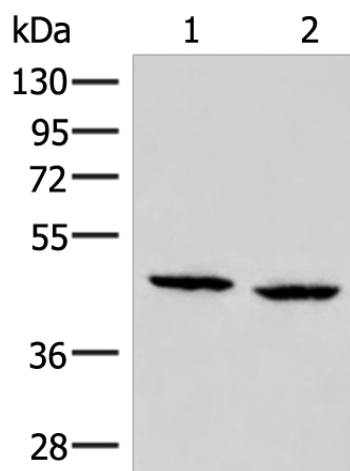
### ZFYVE27 Rabbit Polyclonal Antibody

#### Product data:

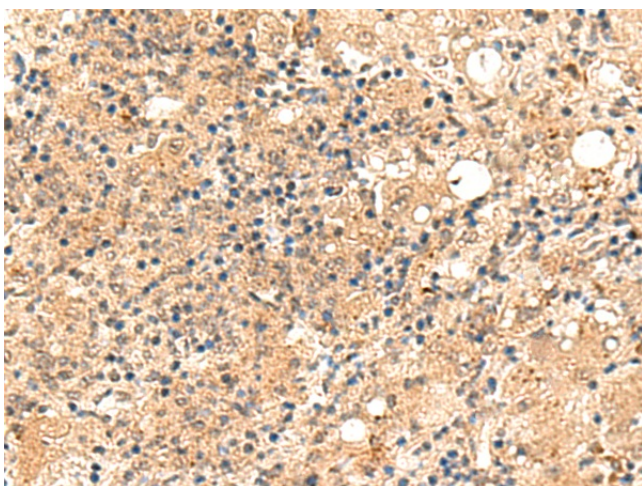
Product Type:	Primary Antibodies
Applications:	IHC, WB
Recommended Dilution:	WB: 500-2000 WB positive control: PC3 and Hela cell lysates IHC: 50-300 Positive control: Human esophagus cancer Predicted cell location: Cytoplasm and Nucleus
Reactivity:	Human, Mouse, Rat
Host:	Rabbit
Isotype:	IgG
Clonality:	Polyclonal
Immunogen:	Fusion protein of human ZFYVE27
Formulation:	pH7.4 PBS, 0.05% NaN <sub>3</sub> , 40% Glycerol
Concentration:	lot specific
Purification:	Antigen affinity purification
Conjugation:	Unconjugated
Storage:	Store at -20°C.
Stability:	1 year
Predicted Protein Size:	46 kDa
Gene Name:	zinc finger FYVE-type containing 27
Database Link:	<a href="#">Entrez Gene 118813 Human Q5T4F4</a>
Background:	This gene encodes a protein with several transmembrane domains, a Rab11-binding domain and a lipid-binding FYVE finger domain. The encoded protein appears to promote neurite formation. A mutation in this gene has been reported to be associated with hereditary spastic paraplegia, however the pathogenicity of the mutation, which may simply represent a polymorphism, is unclear.
Synonyms:	FLJ32919; PROTRUDIN; RP11-459F3.2; SPG33



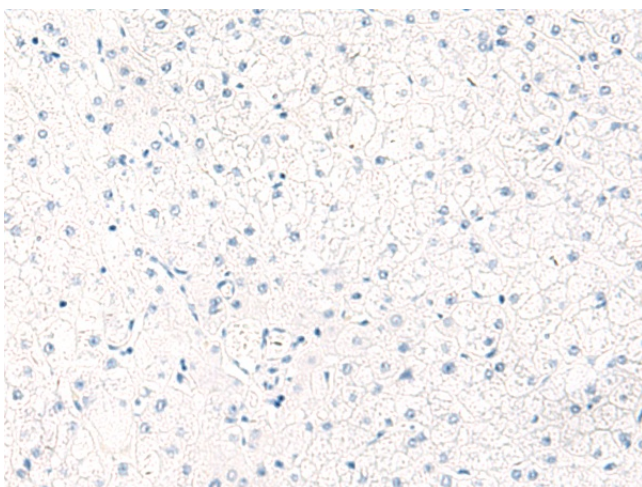
[View online »](#)

**Product images:**

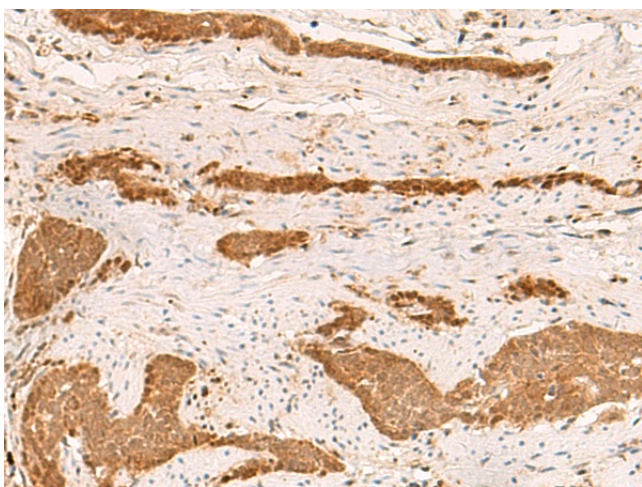
Gel: 8%SDS-PAGE  
Lysate: 40 µg  
Lane 1-2: PC3 and HeLa cell lysates  
Primary antibody: TA366222 (ZFYVE27 Antibody) at dilution 1/350  
Secondary antibody: Goat anti rabbit IgG at 1/5000 dilution  
Exposure time: 20 seconds



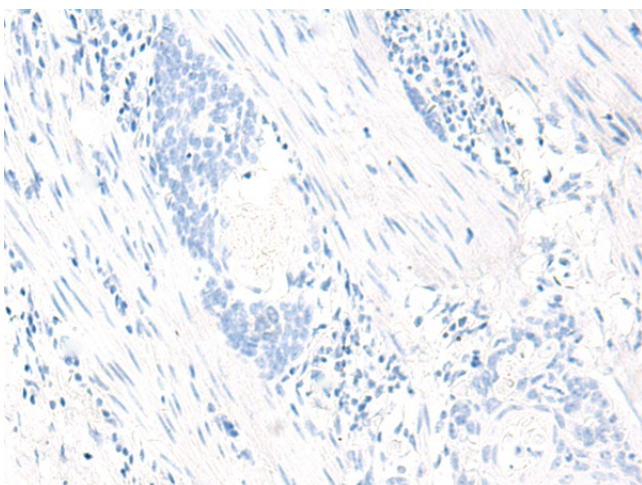
Immunohistochemistry of paraffin-embedded Human esophagus cancer tissue using TA366222 (ZFYVE27 Antibody) at dilution 1/50 (Original magnification: ×200)



Immunohistochemistry of paraffin-embedded Human esophagus cancer tissue using TA366222 (ZFYVE27 Antibody) at dilution 1/50, treated with fusion protein. (Original magnification: ×200)



Immunohistochemistry of paraffin-embedded Human liver cancer tissue using TA366222 (ZFYVE27 Antibody) at dilution 1/50 (Original magnification: ×200)



Immunohistochemistry of paraffin-embedded Human liver cancer tissue using TA366222 (ZFYVE27 Antibody) at dilution 1/50, treated with fusion protein. (Original magnification: ×200)