

Product datasheet for **TA366220**

GIMAP2 Rabbit Polyclonal Antibody

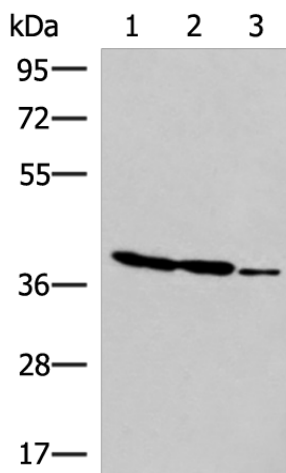
Product data:

Product Type:	Primary Antibodies
Applications:	IHC, WB
Recommended Dilution:	WB: 1000-5000 WB positive control: HT-29, K562 and HUVEC cell lysates IHC: 50-300 Positive control: Human tonsil Predicted cell location: Cytoplasm
Reactivity:	Human
Host:	Rabbit
Isotype:	IgG
Clonality:	Polyclonal
Immunogen:	Fusion protein of human GIMAP2
Formulation:	pH7.4 PBS, 0.05% NaN ₃ , 40% Glycerol
Concentration:	lot specific
Purification:	Antigen affinity purification
Conjugation:	Unconjugated
Storage:	Store at -20°C.
Stability:	1 year
Predicted Protein Size:	38 kDa
Gene Name:	GTPase, IMAP family member 2
Database Link:	Entrez Gene 26157 Human Q9UG22
Background:	This gene encodes a protein belonging to the GTP-binding superfamily and to the immun-associated nucleotide (IAN) subfamily of nucleotide-binding proteins. In humans, the IAN subfamily genes are located in a cluster at 7q36.1.
Synonyms:	DKFZp586D0824; HIMAP2; IMAP2; MGC24275



[View online »](#)

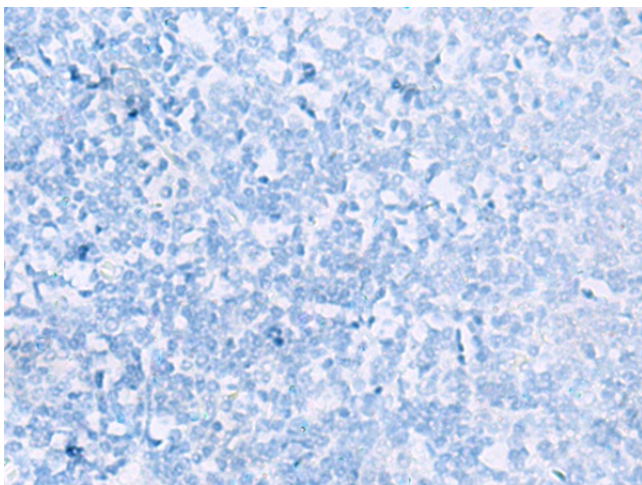
Product images:



Gel: 8%SDS-PAGE
Lysate: 40 μ g
Lane 1-3: HT-29
K562 and HUVEC cell lysates
Primary antibody: TA366220 (GIMAP2 Antibody)
at dilution 1/1000
Secondary antibody: Goat anti rabbit IgG at
1/5000 dilution
Exposure time: 6 minutes



Immunohistochemistry of paraffin-embedded
Human tonsil tissue using TA366220 (GIMAP2
Antibody) at dilution 1/60 (Original magnification:
 $\times 200$)



Immunohistochemistry of paraffin-embedded Human tonsil tissue using TA366220 (GIMAP2 Antibody) at dilution 1/60, treated with fusion protein. (Original magnification: x200)