

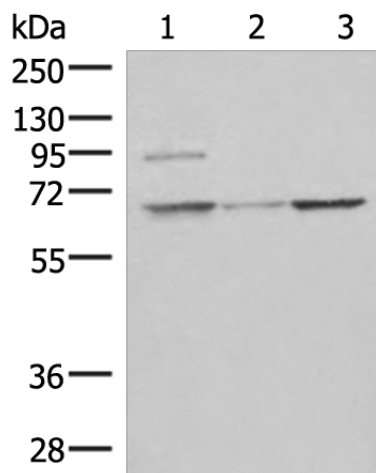
Product datasheet for **TA366214S**

BRME1 Rabbit Polyclonal Antibody

Product data:

Product Type:	Primary Antibodies
Applications:	IHC, WB
Recommended Dilution:	WB: 200-1000 WB positive control: PC3, TM4 and RAW264.7 cell lysates IHC: 50-300 Positive control: Human liver cancer Predicted cell location: Cytoplasm
Reactivity:	Human, Mouse
Host:	Rabbit
Isotype:	IgG
Clonality:	Polyclonal
Immunogen:	Fusion protein of human C19orf57
Formulation:	pH7.4 PBS, 0.05% NaN ₃ , 40% Glycerol
Purification:	Antigen affinity purification
Conjugation:	Unconjugated
Storage:	Store at -20°C.
Stability:	1 year
Predicted Protein Size:	70 kDa
Gene Name:	chromosome 19 open reading frame 57
Database Link:	Entrez Gene 79173 Human Q0VDD7
Background:	The function of this protein remains unknown.
Synonyms:	MGC11271; MGC149720

[View online »](#)

Product images:


Gel: 8%SDS-PAGE

Lysate: 40 µg

Lane 1-3: PC3

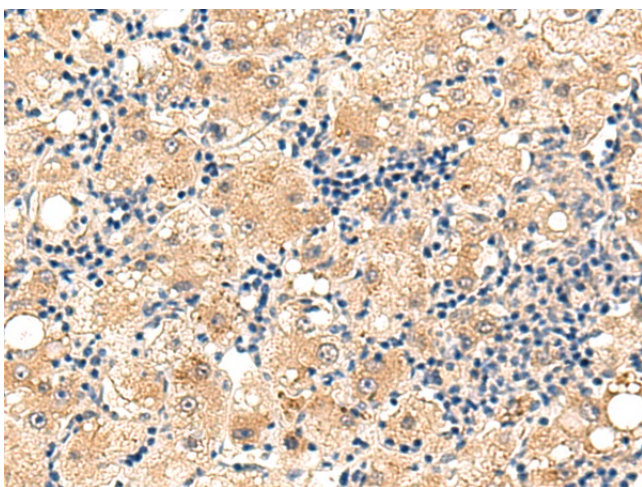
TM4 and RAW264.7 cell lysates

Primary antibody: [TA366214] (C19orf57

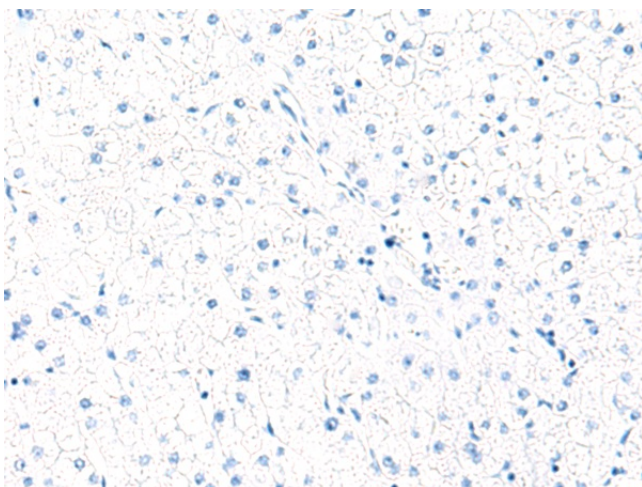
Antibody) at dilution 1/400

Secondary antibody: Goat anti rabbit IgG at 1/8000 dilution

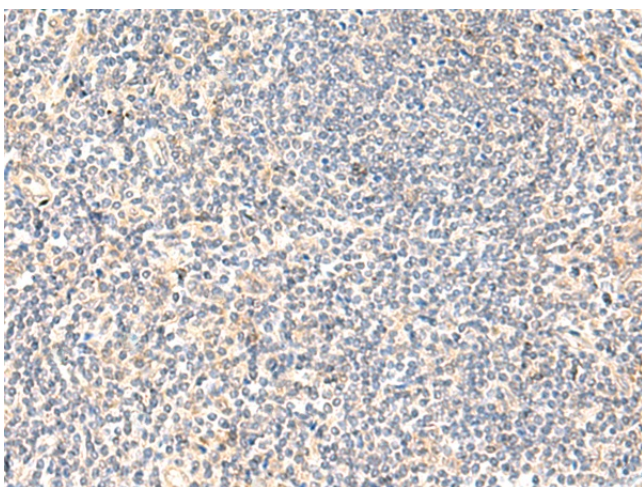
Exposure time: 1 minute



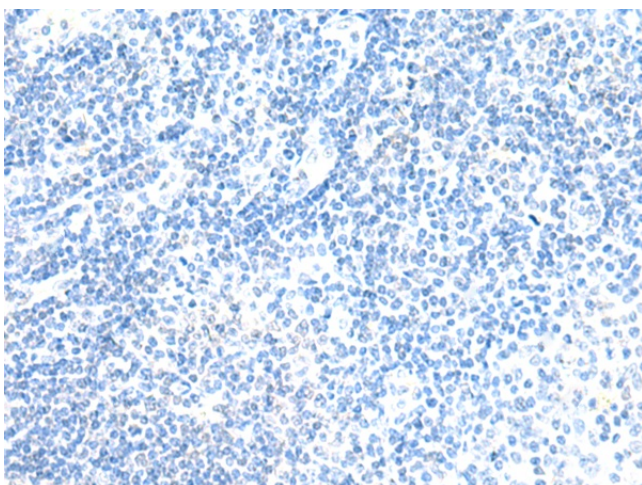
Immunohistochemistry of paraffin-embedded Human liver cancer tissue using [TA366214] (C19orf57 Antibody) at dilution 1/60 (Original magnification: ×200)



Immunohistochemistry of paraffin-embedded Human liver cancer tissue using [TA366214] (C19orf57 Antibody) at dilution 1/60, treated with fusion protein. (Original magnification: ×200)



Immunohistochemistry of paraffin-embedded Human tonsil tissue using [TA366214] (C19orf57 Antibody) at dilution 1/60 (Original magnification: ×200)



Immunohistochemistry of paraffin-embedded Human tonsil tissue using [TA366214] (C19orf57 Antibody) at dilution 1/60, treated with fusion protein. (Original magnification: ×200)